

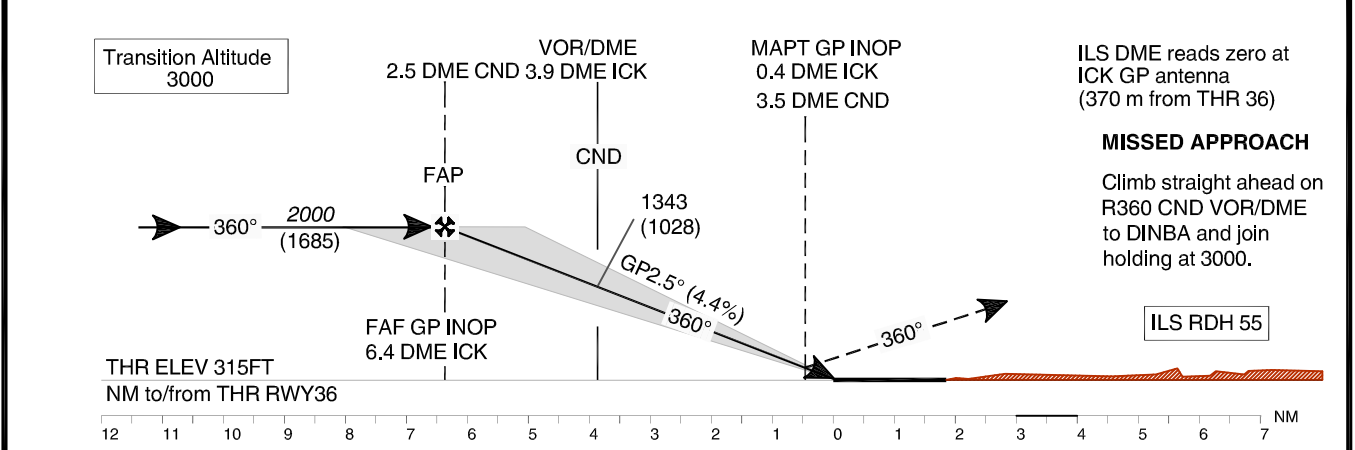
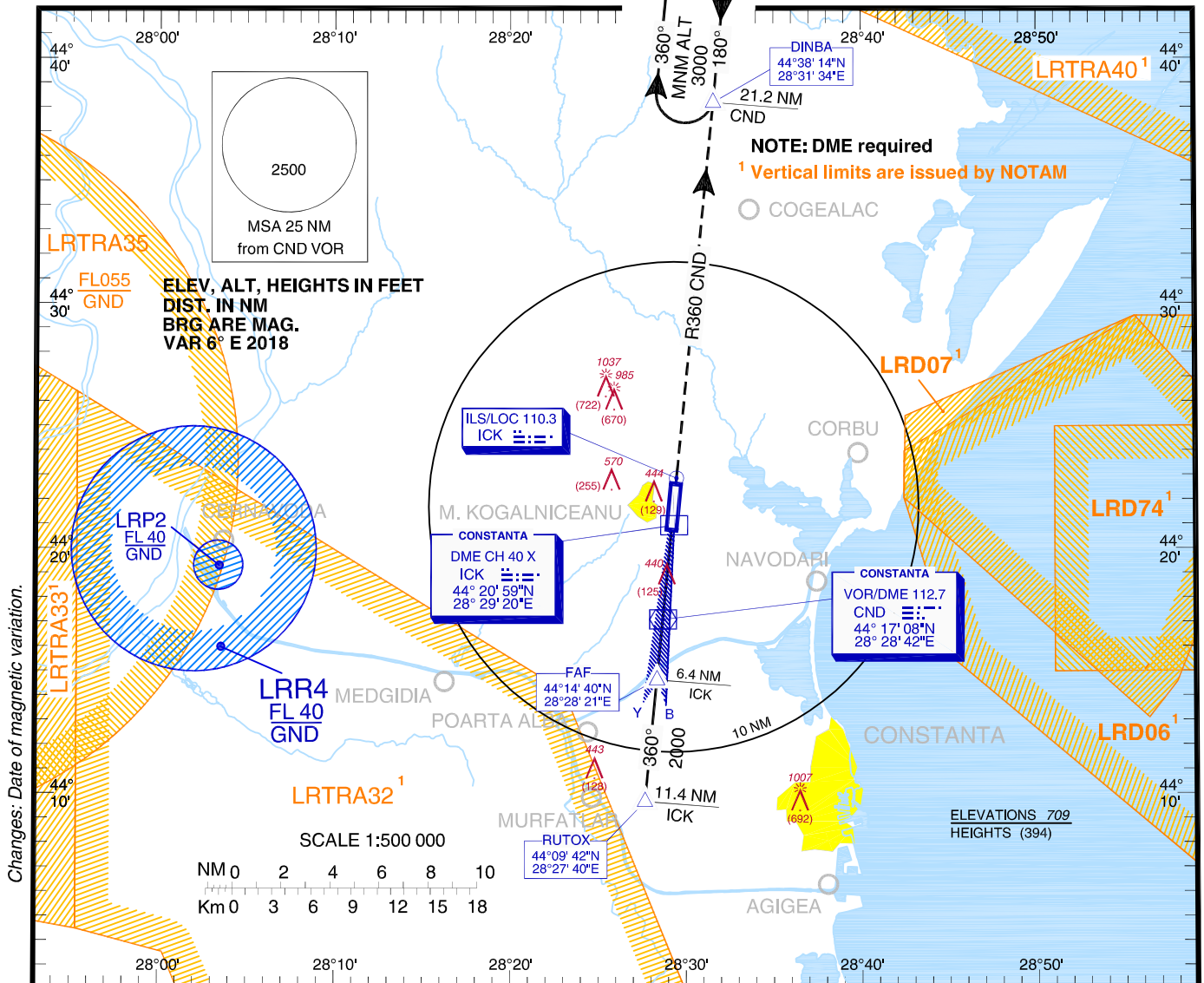
INSTRUMENT AERODROME ELEV. **353 ft**
APPROACH HEIGHTS RELATED TO
CHART - ICAO THR RWY 36 - ELEV 315 ft

Constanta ATIS 118.750
Constanta Approach 122.905
Constanta Tower 124.030

CONSTANȚA/M.Kogălniceanu-Constanța (LRCK)

Constanta Approach ALTN 127.350
Constanta Tower ALTN 120.450

ILS
RWY 36



OCA/H		A	B	C	D
Straight-in	ILS CAT I	511 (196)	523 (208)	531 (216)	542 (227)
	Approach	690 (375)			
Circling		740	870	1380	1440

GS	fts	70	90	100	120	140	160
FAF-MAPT 5.96 NM	min:sec	5:06	3:58	3:34	2:59	2:33	2:14
Rate of descent 4.4%	ft/min	310	398	442	531	619	707

Dist to ICK DME	NM	6	5	4	3.9	3	2
Dist to THR 36	NM	5.8	4.8	3.8	3.7	2.8	1.8
Altitudes (Height)	ft	1907 (1592)	1642 (1327)	1376 (1061)	1343 (1028)	1111 (796)	846 (531)

ILS GP INOP: Timing not authorized for defining MAPt.

For data tabulation see verso

**CONSTANȚA / Mihail Kogălniceanu - Constanța (LRCK)
ILS RWY 36**

AERONAUTICAL DATA TABULATION

ILS Approach to RWY 36 from RUTOX	
Fix/Point	Coordinates
RUTOX (IF) – BRG 179.89° / 11.35NM ICK	44°09'41.7"N 028°27'40.2"E
FAP (FAF GP INOP) – BRG 179.90° / 6.35NM ICK	44°14'40.3"N 028°28'20.8"E
CND VOR/DME	44°17'08.0"N 028°28'42.0"E
MAPT GP INOP – BRG 179.91° / 0.40NM ICK	44°20'36.0"N 028°29'09.2"E
THR RWY 36	44°20'47.20"N 028°29'10.73"E
ILS LOC ICK	44°22'54.0"N 028°29'28.4"E
DINBA (MAHF) – BRG 359.89° / 21.20NM CND	44°38'14.0"N 028°31'33.9"E