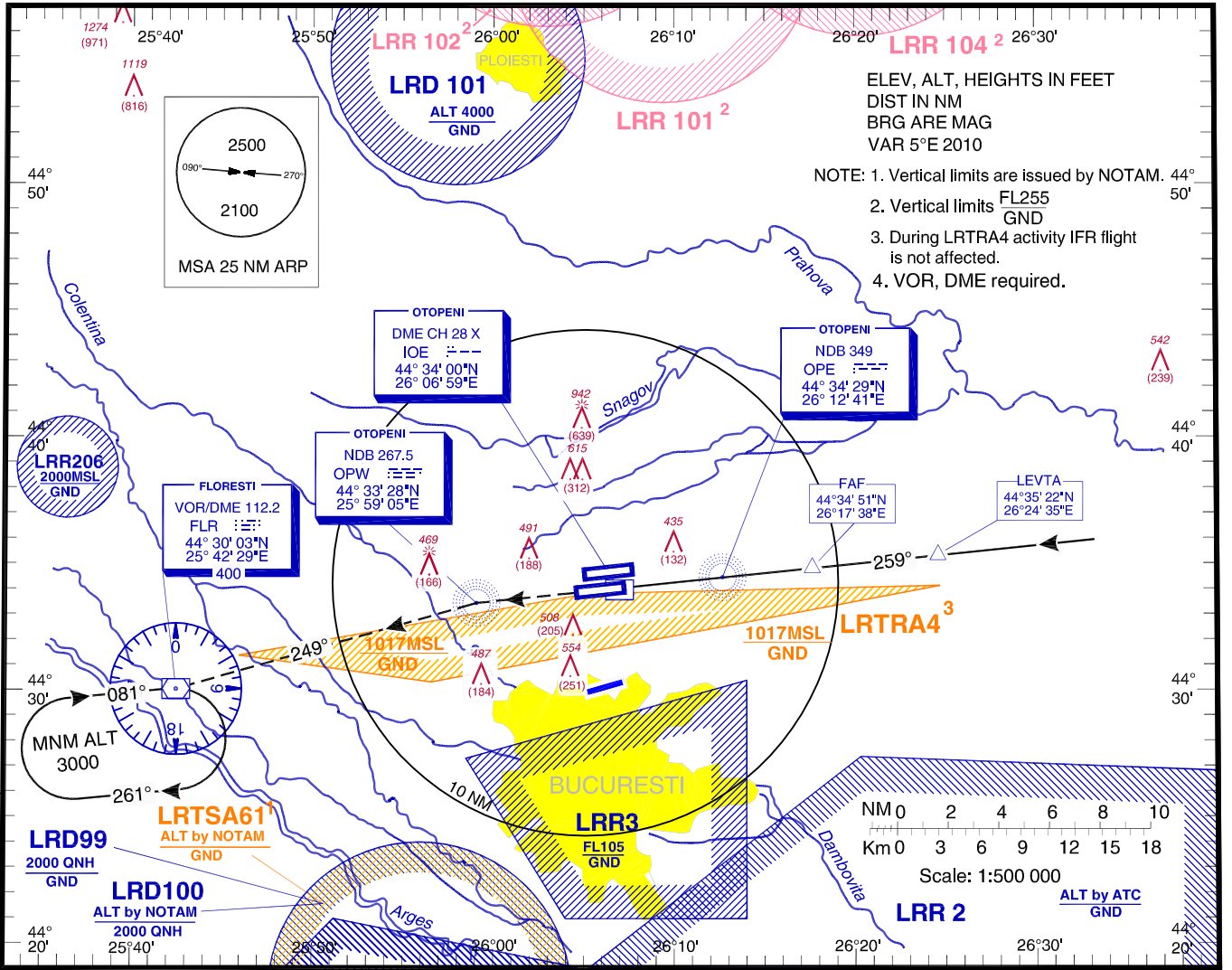


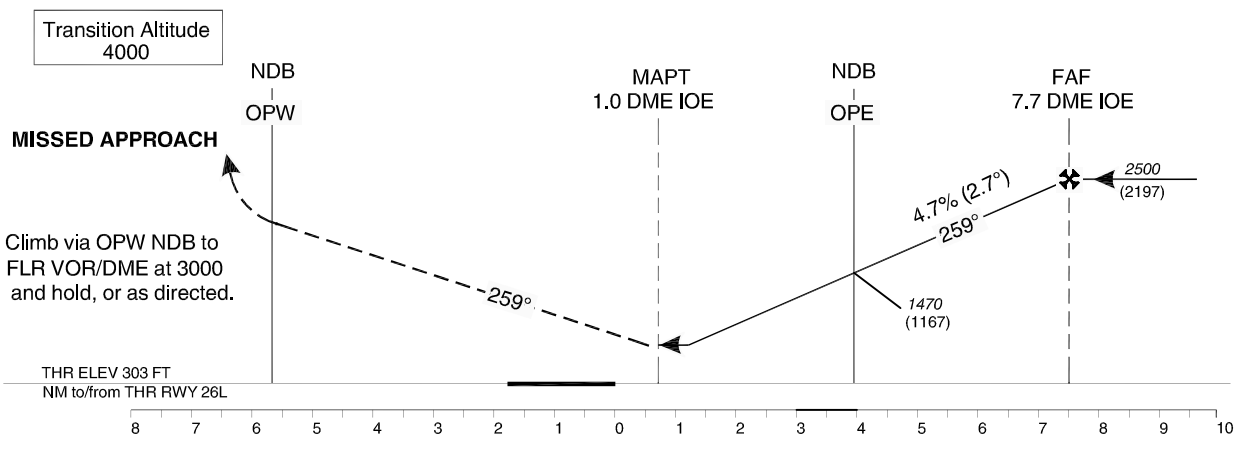
**INSTRUMENT APPROACH CHART - ICAO** AERODROME ELEV. 314FT  
 BUCURESTI APPROACH 119.415  
 BUCURESTI APP ALTN 120.600  
 BUCURESTI DIRECTOR 127.155  
 BUCURESTI DIRECTOR ALTN 120.600

OTOPENI TOWER 118.805  
 OTOPENI TOWER ALTN 120.900  
 OTOPENI GROUND 121.855  
 OTOPENI GROUND ALTN 121.700  
 OTOPENI ATIS 118.500

**BUCUREȘTI / Henri Coandă (LROP) NDB RWY 26L**



Changes: Channels, Frequencies, Chart redrawn



OCA/H	A	B	C	D
Straight-in approach	790 (487)			
Circling*	780	790	1010	

GS	fts	70	90	100	120	140	160
FAF-MAPT 6.7 NM	min:s	5:45	4:28	4:01	3:21	2:52	2:31
Rate of descent	ft/min	333	428	476	571	666	762

Distance to IOE DME	NM	2	3	4	5	6	7
Altitude (Height)	ft	876 (573)	1163 (860)	1449 (1146)	1736 (1433)	2022 (1719)	2309 (2006)

\*Circling NORTH of airport only.

For data tabulation see verso.

**BUCURESTI / Henri Coanda (LROP)**  
**NDB RWY 26L**

**AERONAUTICAL DATA TABULATION**

<b>NDB approach to RWY 26L from LEVTA</b>	
<b>LEVTA</b>	44°35'22.0"N 026°24'34.5"E
<b>7.7 DME IOE (FAF)</b>	44°34'51.4"N 026°17'38.2"E
<b>OPE NDB (Stepdown)</b>	44°34'29.2"N 026°12'40.5"E
<b>1.0 DME IOE (MAPT)</b>	44°34'09.8"N 026°08'21.4"E
<b>THR RWY 26L</b>	44°34'04.69"N 026°07'13.54"E
<b>OPW NDB</b>	44°33'27.9"N 025°59'04.7"E
<b>FLR VOR/DME</b>	44°30'03.0"N 025°42'29.4"E

Final approach descent angle: 2.70°