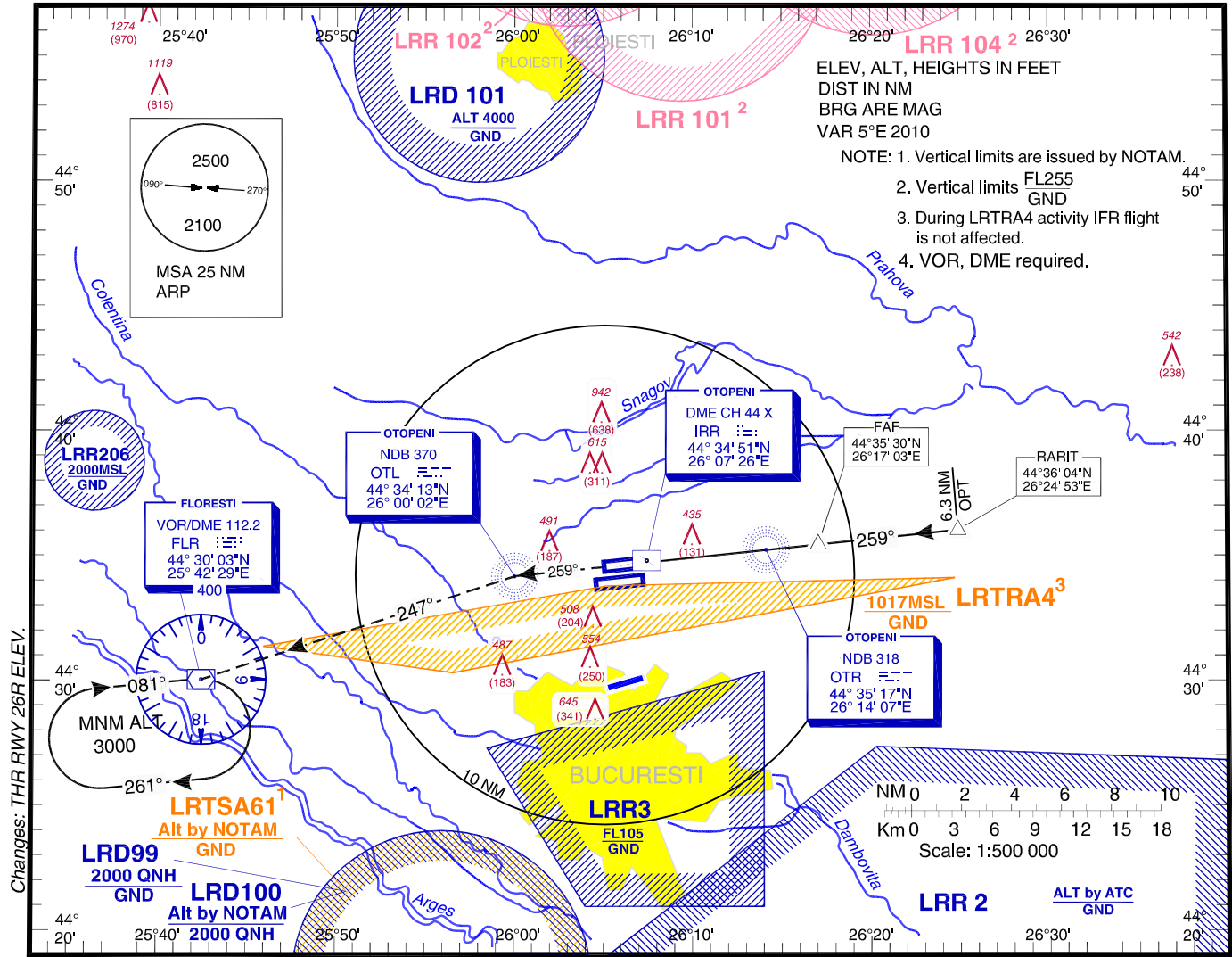


INSTRUMENT AERODROME ELEV. 314 FT
APPROACH HEIGHTS RELATED TO
CHART - ICAO THR RWY 26R - ELEV 304 FT

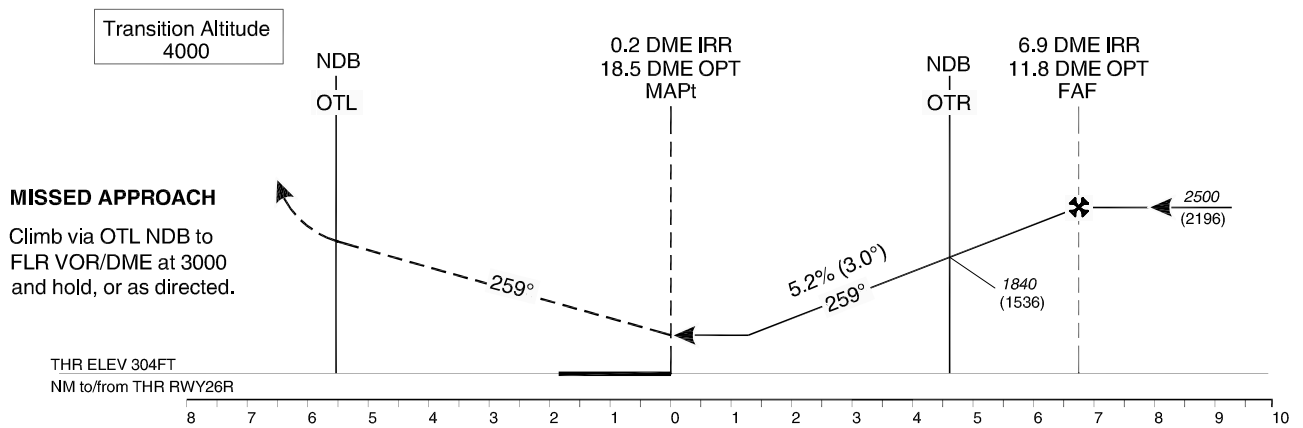
BUCURESTI APPROACH	119.415
BUCURESTI APP ALTN	120.600
BUCURESTI DIRECTOR	127.155
BUCURESTI DIRECTOR ALTN	120.600

OTOPENI TOWER	118.805
OTOPENI TOWER ALTN	120.900
OTOPENI GROUND	121.855
OTOPENI GROUND ALTN	121.700
OTOPENI ATIS	118.500

BUCURESTI /
Henri Coanda (LROP)
NDB
RWY 26R



Changes: THR RWY 26R ELEV.



MISSED APPROACH
Climb via OTL NDB to FLR VOR/DME at 3000 and hold, or as directed.

OCA/H	A	B	C	D
Straight-in approach		690 (386)		
Circling*	780	790	1010	

GS	kts	70	90	100	120	140	160
FAF-MAPT 6.7 NM	min:s	5:45	4:28	4:01	3:21	2:52	2:31
Rate of descent	ft/min	372	478	531	637	743	849

Timing not authorized for defining the MAPt.

*Circling NORTH of airport only.

For data tabulation see verso.

BUCURESTI / Henri Coanda (LROP)
NDB RWY 26R

AERONAUTICAL DATA TABULATION

NDB approach to RWY 26R from RARIT	
RARIT	44°36'04.4"N 026°24'53.3"E
6.9 DME IRR (FAF)	44°35'29.8"N 026°17'02.6"E
OTR NDB (Stepdown)	44°35'16.8"N 026°14'07.3"E
0.2 DME IRR (MAPt)	44°34'47.7"N 026°07'40.0"E
THR RWY 26R	44°34'47.73"N 026°07'39.96"E
OTL NDB	44°34'12.9"N 026°00'02.2"E
FLR VOR/DME	44°30'03.0"N 025°42'29.4"E

Final approach descent angle: 3.00°