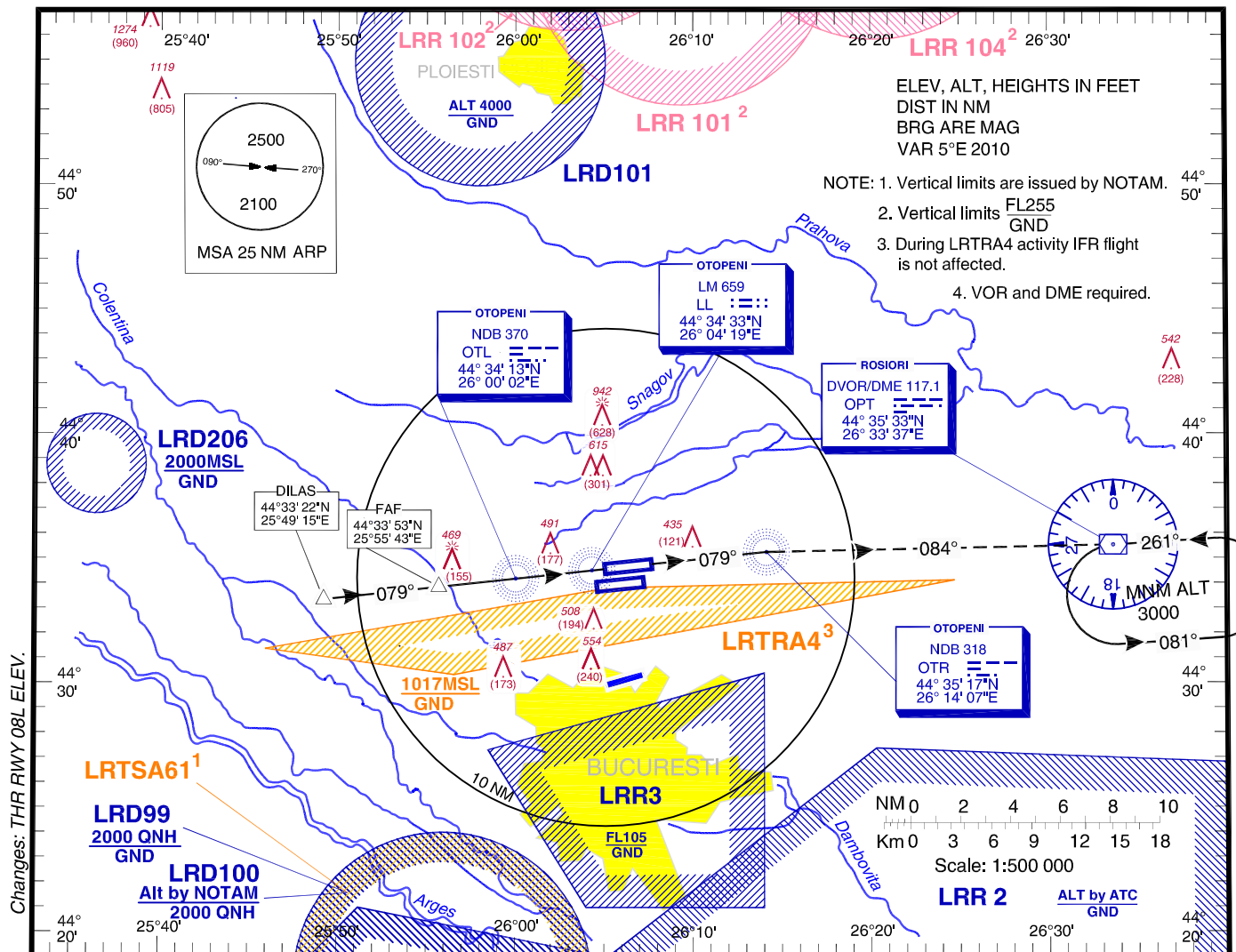


**INSTRUMENT APPROACH CHART - ICAO**  
AERODROME ELEV. 314 FT  
HEIGHTS RELATED TO AD ELEV

BUCURESTI APPROACH	119.415
BUCURESTI APP ALTN	120.600
BUCURESTI DIRECTOR	127.155
BUCURESTI DIRECTOR ALTN	120.600

OTOPENI TOWER	118.805
OTOPENI TOWER ALTN	120.900
OTOPENI GROUND	121.855
OTOPENI GROUND ALTN	121.700
OTOPENI ATIS	118.500

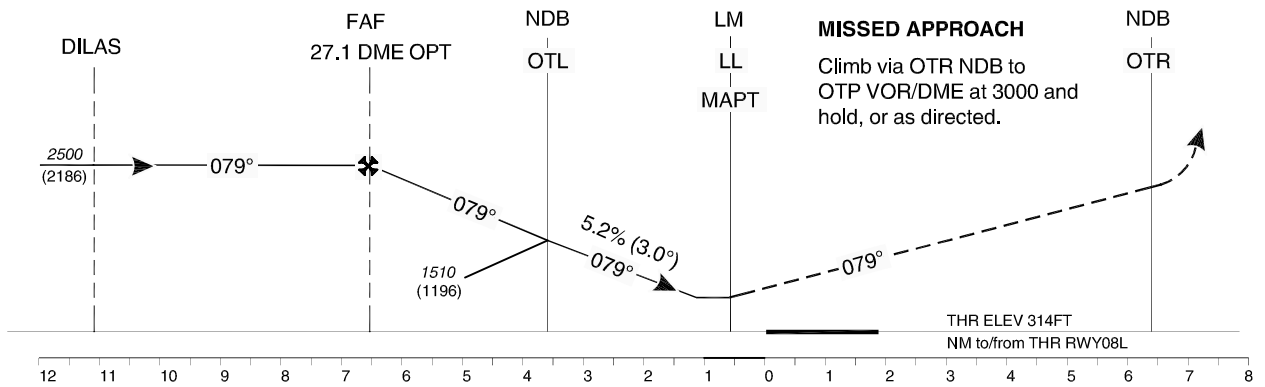
**BUCUREȘTI / Henri Coandă (LROP)**  
NDB  
RWY 08L



Changes: THR RWY 08L ELEV.

**LRR 2**

Transition Altitude  
4000



OCA/H	A	B	C	D
Straight-in approach	710 (396)		720 (406)	
Circling*	780	790	1010	

GS	kts	70	90	100	120	140	160
FAF-MAPT 6.2 NM	min:s	5:19	4:08	3:43	3:06	2:40	2:19
Rate of descent	ft/min	372	478	531	637	743	849

For data tabulation see verso.

\* Circling NORTH of airport only.

**BUCURESTI / Henri Coanda (LROP)**  
**NDB RWY 08L**

**AERONAUTICAL DATA TABULATION**

<b>NDB approach to RWY 08L from DILAS</b>	
<b>DILAS</b>	44°33'22.1"N 025°49'14.5"E
<b>27.1 DME OPT (FAF)</b>	44°33'53.0"N 025°55'43.3"E
<b>OTL NDB (Stepdown)</b>	44°34'12.9"N 026°00'02.2"E
<b>LM LL (MAPT)</b>	44°34'32.5"N 026°04'19.0"E
<b>THR RWY 08L</b>	44°34'35.84"N 026°05'02.76"E
<b>OTR NDB</b>	44°35'16.8"N 026°14'07.3"E
<b>OPT VOR/DME</b>	44°35'32.6"N 026°33'36.6"E

Final approach descent angle: 3.00°