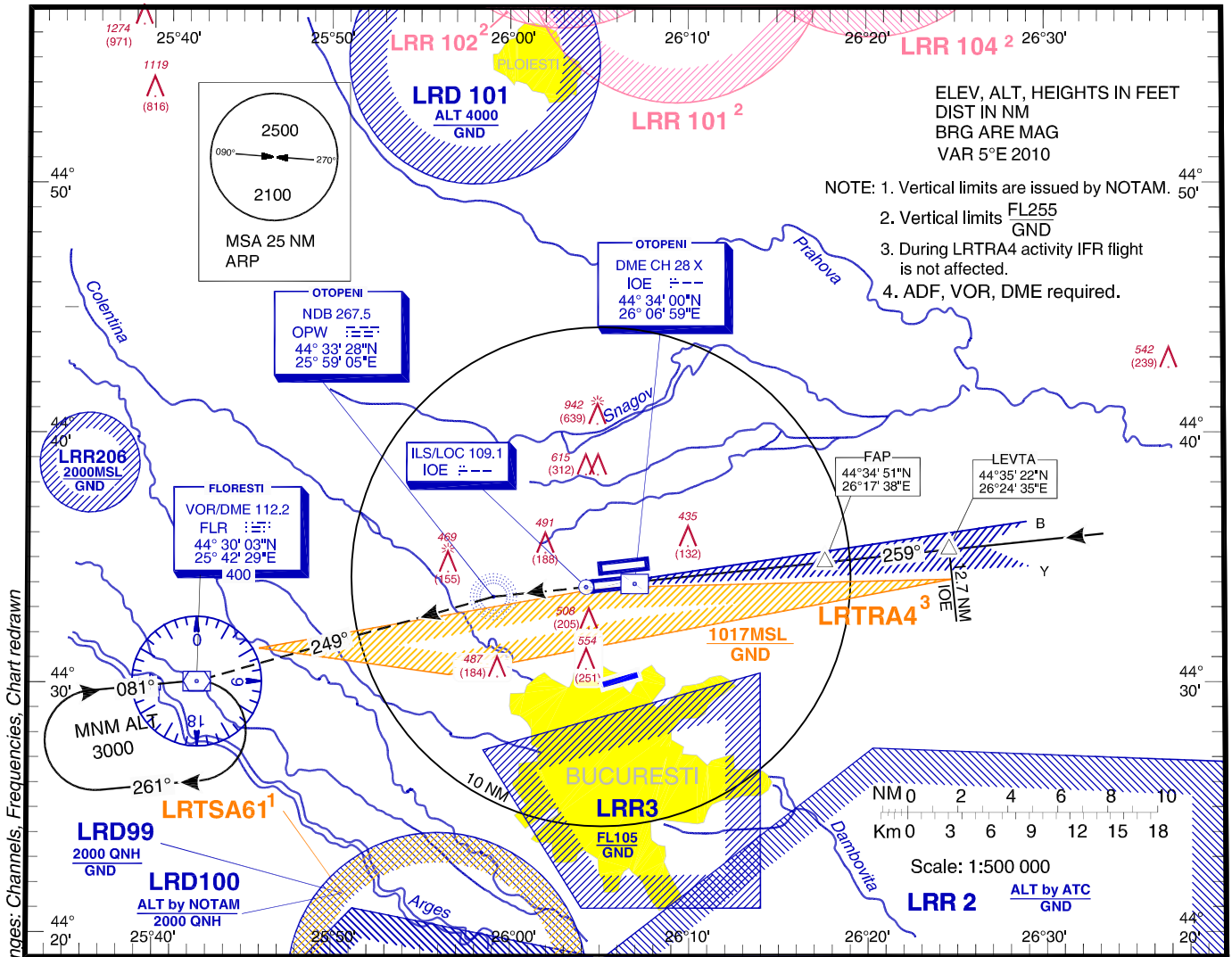


**INSTRUMENT APPROACH CHART - ICAO** AERODROME ELEV. 314FT  
HEIGHTS RELATED TO THR RWY 26L - ELEV 303FT

BUCURESTI APPROACH 119.415  
BUCURESTI APP ALTN 120.600  
BUCURESTI DIRECTOR 127.155  
BUCURESTI DIRECTOR ALTN 120.600

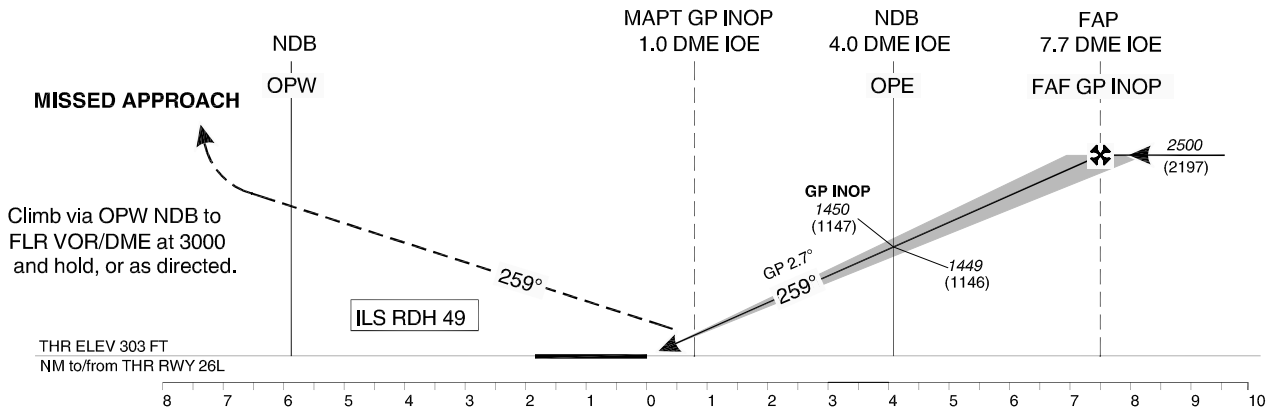
OTOPENI TOWER 118.805  
OTOPENI TOWER ALTN 120.900  
OTOPENI GROUND 121.855  
OTOPENI GROUND ALTN 121.700  
OTOPENI ATIS 118.500

**BUCUREȘTI / Henri Coandă (LROP)**  
ILS  
RWY 26L



ILS DME reads zero at IOE GP antenna.  
(365 m from THR 26L)

Transition Altitude  
4000



| OCA/H                |             | A            | B            | C            | D            |
|----------------------|-------------|--------------|--------------|--------------|--------------|
| Straight-in approach | ILS CAT I   | 439<br>(136) | 447<br>(144) | 456<br>(153) | 464<br>(161) |
|                      | ILS GP INOP | 730<br>(427) |              |              |              |
| Circling*            |             | 780          | 790          | 1010         |              |

|                 |        |      |      |      |      |      |      |
|-----------------|--------|------|------|------|------|------|------|
| GS              | kts    | 70   | 90   | 100  | 120  | 140  | 160  |
| FAF-MAPT 6.7 NM | min:s  | 5:45 | 4:28 | 4:01 | 3:21 | 2:52 | 2:31 |
| Rate of descent | ft/min | 333  | 428  | 476  | 571  | 666  | 762  |

| Distance to IOE DME | NM | 2            | 3             | 4              | 5              | 6              | 7              |
|---------------------|----|--------------|---------------|----------------|----------------|----------------|----------------|
| Altitude (Height)   | ft | 876<br>(573) | 1163<br>(860) | 1449<br>(1146) | 1736<br>(1433) | 2022<br>(1719) | 2309<br>(2006) |

\*Circling NORTH of airport only.

For data tabulation see verso.

**BUCURESTI / Henri Coanda (LROP)  
ILS RWY 26L**

**AERONAUTICAL DATA TABULATION**

| <b>ILS approach to RWY 26L from LEVTA</b>            |                              |
|--|------------------------------|
| <b>LEVTA</b>   | 44°35'22.0"N 026°24'34.5"E   |
| <b>7.7 DME IOE (FAF GP INOP)</b>                     | 44°34'51.4"N 026°17'38.2"E   |
| <b>4.0 DME IOE (Height check / Stepdown GP INOP)</b> | 44°34'28.6"N 026°12'32.0"E   |
| <b>1.0 DME IOE (MAPT GP INOP)</b>                    | 44°34'09.8"N 026°08'21.4"E   |
| <b>THR RWY 26L</b>                                   | 44°34'04.69"N 026°07'13.54"E |
| <b>LOC IOE</b>                                       | 44°33'51.2"N 026°04'15.9"E   |
| <b>OPW NDB</b>                                       | 44°33'27.9"N 025°59'04.7"E   |
| <b>FLR VOR/DME</b>                                   | 44°30'03.0"N 025°42'29.4"E   |