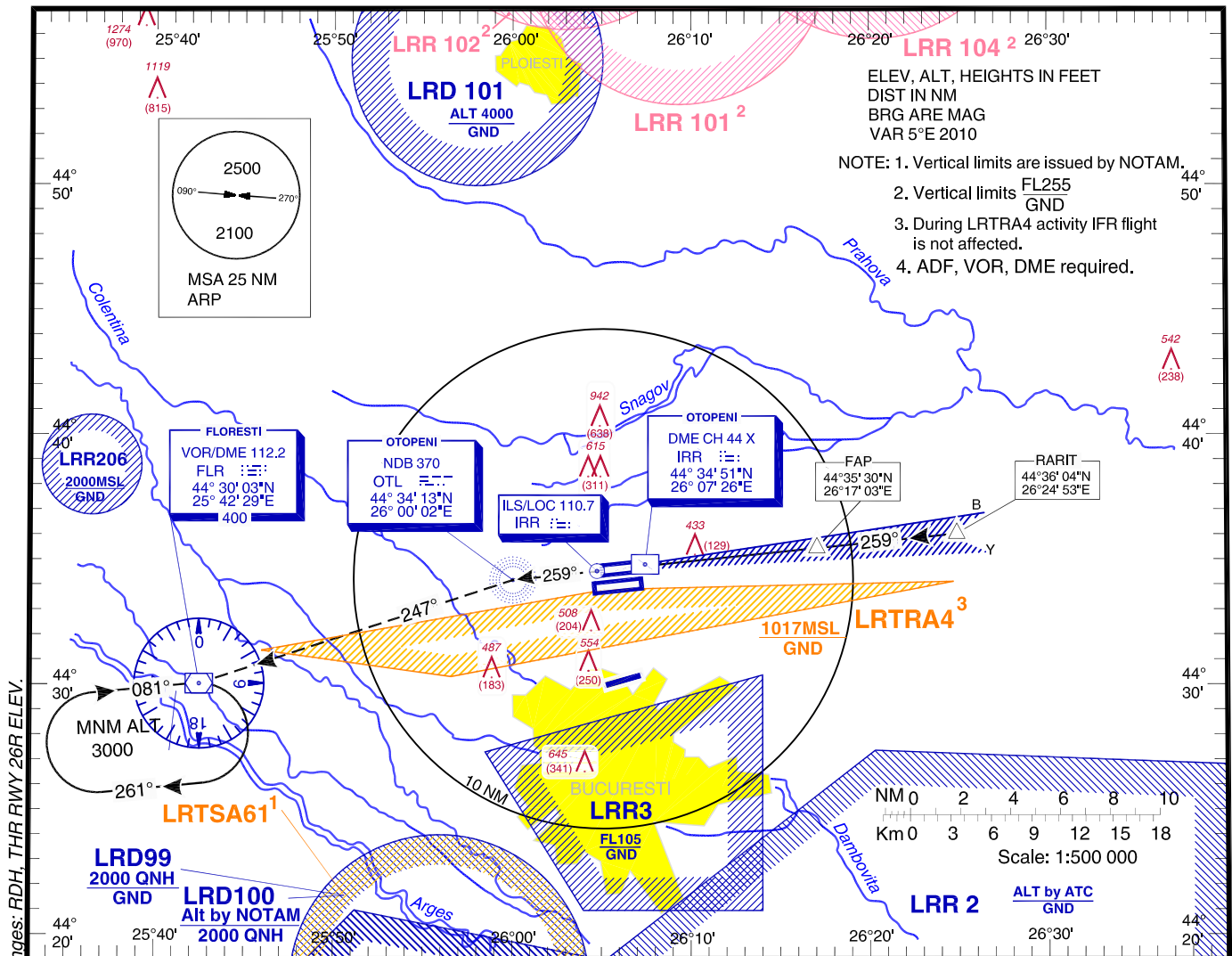


**INSTRUMENT AERODROME ELEV.314 FT**  
**APPROACH** HEIGHTS RELATED TO  
**CHART - ICAO** THR RWY 26R - ELEV 304 FT

BUCURESTI APPROACH 119.415  
BUCURESTI APP ALTN 120.600  
BUCURESTI DIRECTOR 127.155  
BUCURESTI DIRECTOR ALTN 120.600

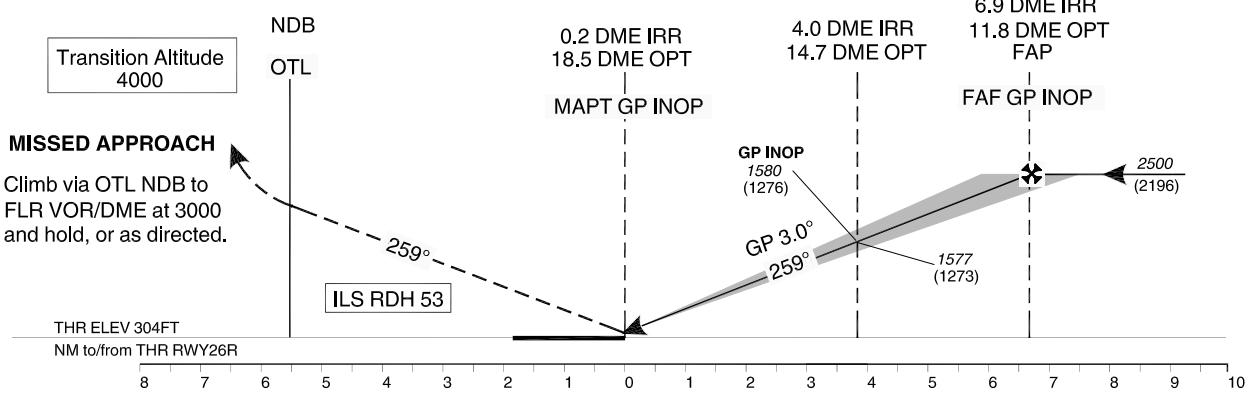
OTOPENI TOWER 118.805  
OTOPENI TOWER ALTN 120.900  
OTOPENI GROUND 121.855  
OTOPENI GROUND ALTN 121.700  
OTOPENI ATIS 118.500

**BUCUREȘTI / Henri Coandă (LRDP)**  
**ILS**  
**RWY 26R**



Changes: RDH, THR RWY 26R ELEV.

ILS DME reads zero at IRR GP antenna  
(299 m from THR 26R)



OCA/H	A	B	C	D
ILS CAT I	478 (174)	490 (186)	498 (194)	509 (205)
ILS GP INOP	680 (376)			
Circling*	780	790	1010	

\* Circling NORTH of airport only.

GS	kts	70	90	100	120	140	160
FAF-MAPT 6.7 NM	min:s	5:45	4:28	4:01	3:21	2:52	2:31
Rate of descent	ft/min	372	478	531	637	743	849

Timing not authorized for defining the MAPT.

Distance to IRR DME	NM	1	2	3	4	5	6
Altitude (Height)	ft	621 (317)	940 (636)	1258 (954)	1577 (1273)	1895 (1591)	2214 (1910)

For data tabulation see verso.

**BUCURESTI / Henri Coanda (LROP)  
ILS RWY 26R**

**AERONAUTICAL DATA TABULATION**

<b>ILS approach to RWY 26R from RARIT</b>	
<b>RARIT</b>	44°36'04.4"N 026°24'53.3"E
<b>6.9 DME IRR (FAF GP INOP)</b>	44°35'29.8"N 026°17'02.6"E
<b>4.0 DME IRR (Height Check/Stepdown ILS GP INOP)</b>	44°35'11.8"N 026°13'00.4"E
<b>0.2 DME IRR (MAPt GP INOP)</b>	44°34'47.7"N 026°07'40.0"E
<b>THR RWY 26R</b>	44°34'47.73"N 026°07'39.96"E
<b>IRR LOC</b>	44°34'34.4"N 026°04'44.4"E
<b>OTL NDB</b>	44°34'12.9"N 026°00'02.2"E
<b>FLR VOR/DME</b>	44°30'03.0"N 025°42'29.4"E