

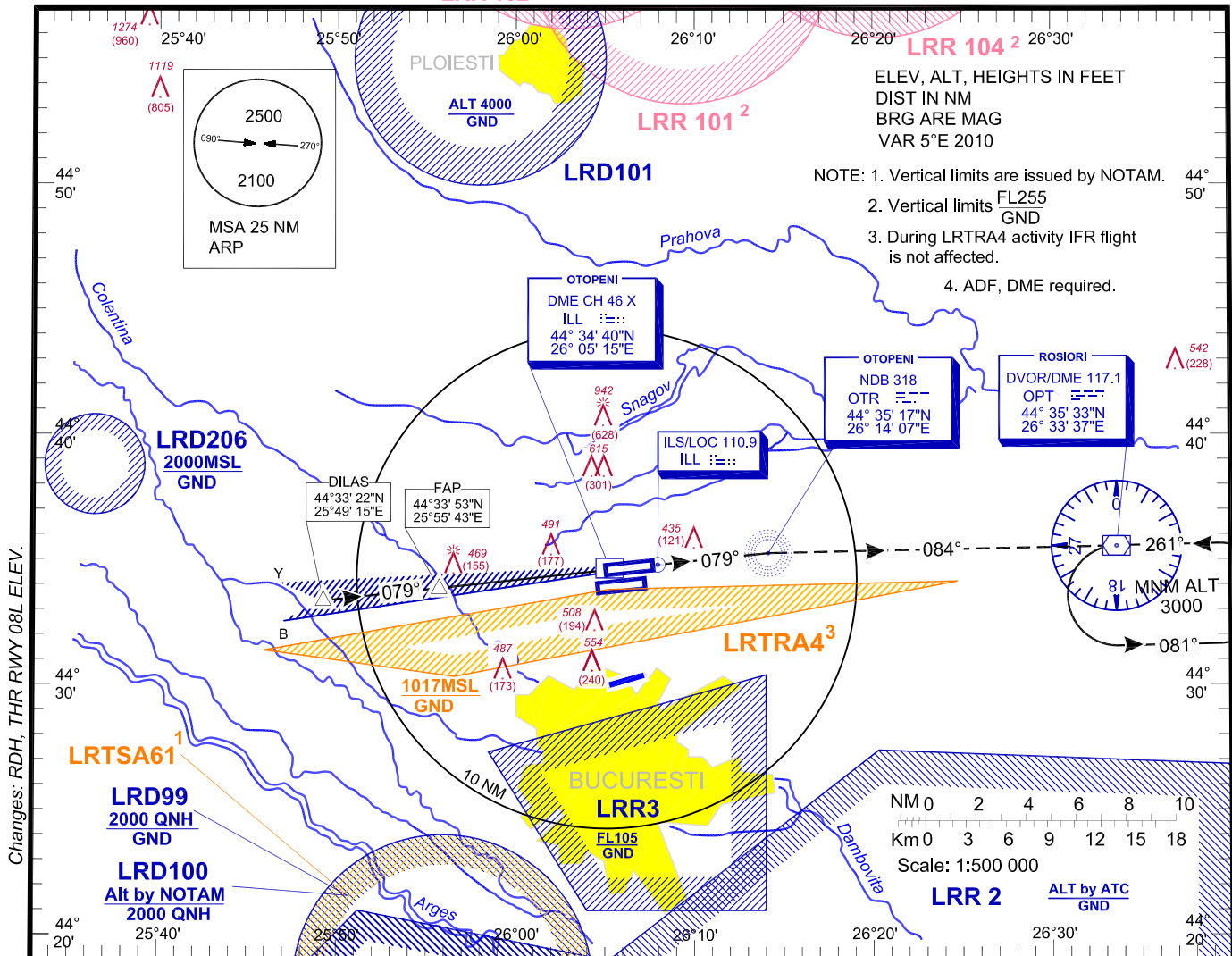
INSTRUMENT AERODROME ELEV. 314 FT
APPROACH CHART - ICAO

HEIGHTS RELATED TO
THR RWY 08L - ELEV. 314 FT

BUCURESTI APPROACH 119.415
BUCURESTI APP ALTN 120.600
BUCURESTI DIRECTOR 127.155
BUCURESTI DIRECTOR ALTN 120.600

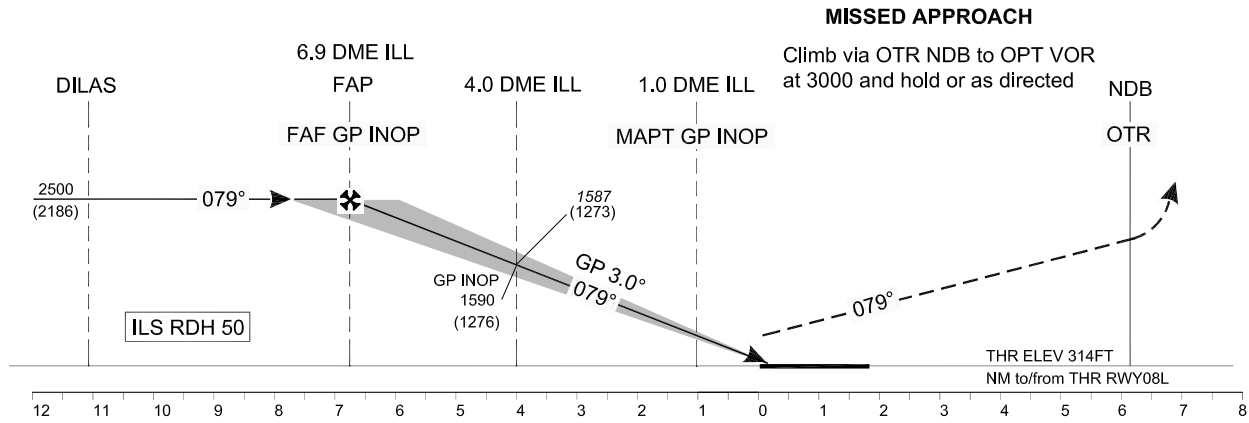
OTOPENI TOWER 118.805
OTOPENI TOWER ALTN 120.900
OTOPENI GROUND 121.855
OTOPENI GROUND ALTN 121.700
OTOPENI ATIS 118.500

BUCUREȘTI
Henri Coandă (LROP)
ILS
RWY 08L



Changes: RDH, THR RWY 08L ELEV.

LRR 2 Transition Altitude 4000
ILS DME reads zero at ILL GP antenna. (328 m from THR 08L)



OCA/H	A	B	C	D	
Straight-in approach	ILS CAT I	456 (142)	466 (152)	476 (162)	489 (175)
	ILS CAT II	361 (47)	374 (60)	384 (70)	397 (83)
	ILS GP INOP	690 (376)			
Circling*	780	790	1010		

GS	kts	70	90	100	120	140	160
FAF-MAPT 5.9 NM	min:s	5:04	3:56	3:32	2:57	2:32	2:13
Rate of descent	ft/min	372	478	531	637	743	849
Distance to ILL DME		NM	5	4	3	2	
Altitude (Height)		ft	1905 (1591)	1587 (1273)	1268 (954)	950 (636)	

* Circling NORTH of airport only.

For data tabulation see verso.

BUCURESTI / Henri Coanda (LROP)
ILS RWY 08L

AERONAUTICAL DATA TABULATION

ILS approach to RWY 08L from DILAS	
DILAS	44°33'22.1"N 025°49'14.5"E
6.9 DME ILL (FAF GP INOP)	44°33'53.0"N 025°55'43.3"E
4.0 DME ILL (Height Check/Stepdown ILS GP INOP)	44°34'11.4"N 025°59'42.7"E
1.0 DME ILL (MAPT GP INOP)	44°34'30.6"N 026°03'53.2"E
THR RWY 08L	44°34'35.84"N 026°05'02.76"E
ILL LOC	44°34'49.0"N 026°07'56.8"E
OTR NDB	44°35'16.8"N 026°14'07.3"E
OPT VOR/DME	44°35'32.6"N 026°33'36.6"E