

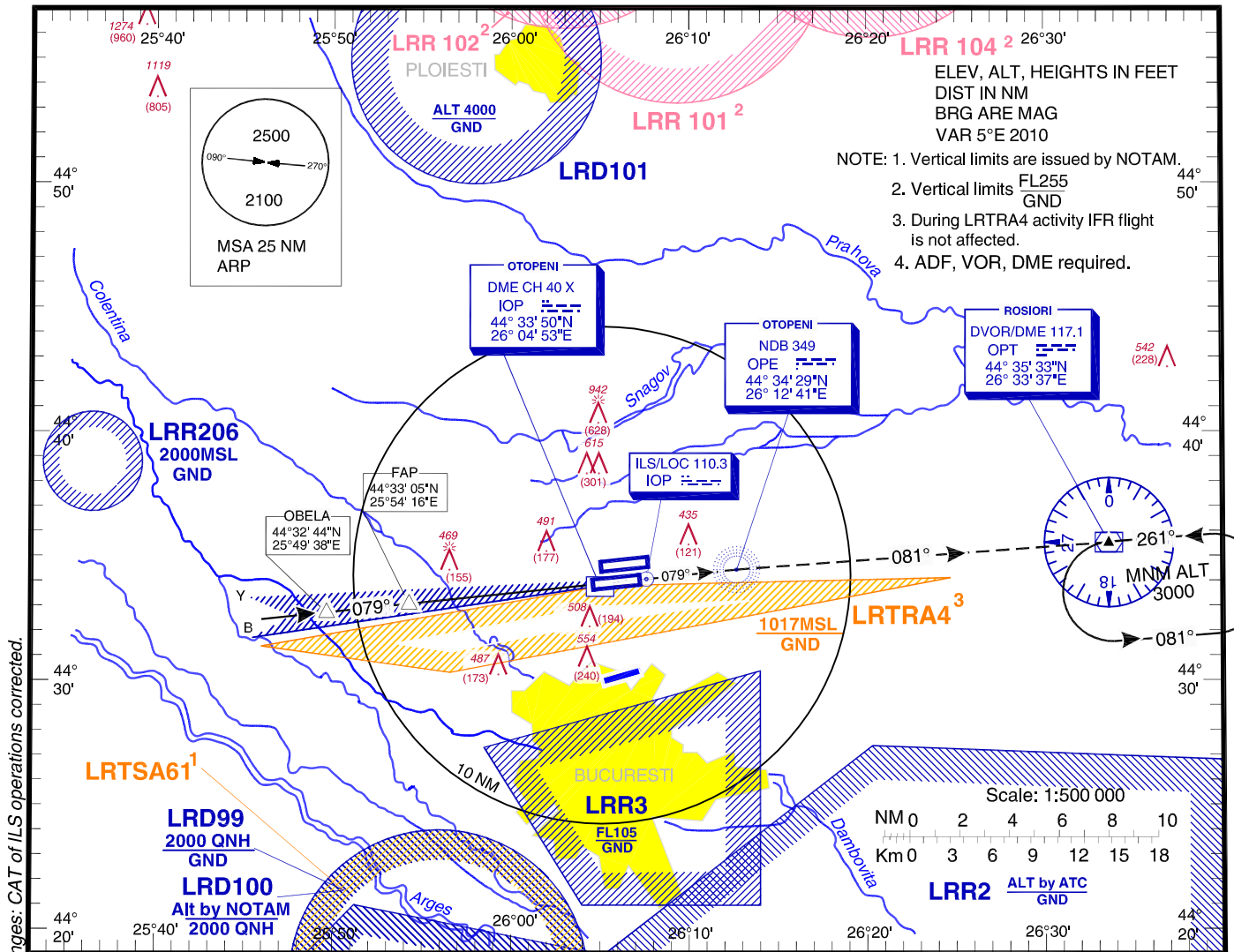
**INSTRUMENT APPROACH CHART - ICAO**

**AERODROME ELEV. 314 FT**  
HEIGHTS RELATED TO AD ELEV

BUCURESTI APPROACH	119.415
BUCURESTI APP ALTN	120.600
BUCURESTI DIRECTOR	127.155
BUCURESTI DIRECTOR ALTN	120.600

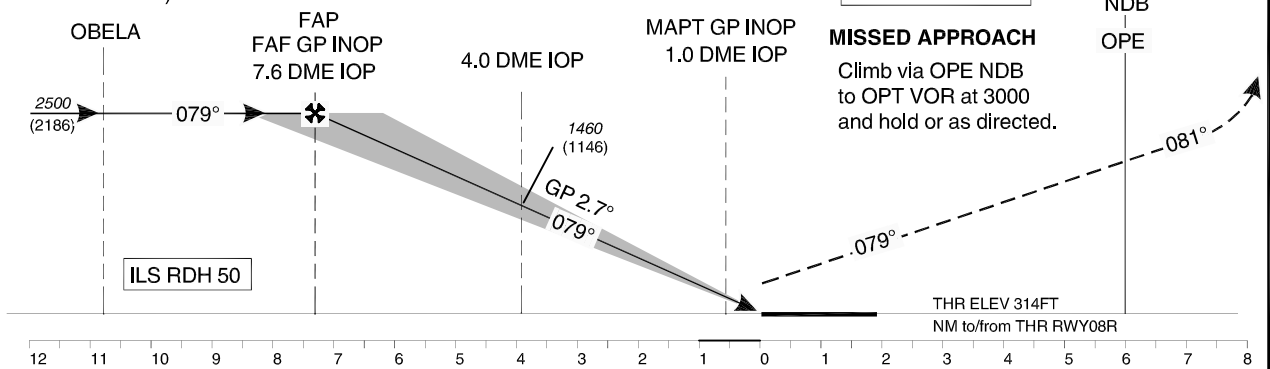
OTOPENI TOWER	118.805
OTOPENI TOWER ALTN	120.900
OTOPENI GROUND	121.855
OTOPENI GROUND ALTN	121.700
OTOPENI ATIS	118.500

**BUCUREȘTI / Henri Coandă (LROP) ILS RWY 08R**



Changes: CAT of ILS operations corrected.

ILS DME reads zero at IOP GP antenna.  
(375 m from THR 08R)



OCA/H		A	B	C	D
Straight-in approach	ILS CAT I	452 (138)	458 (144)	468 (154)	475 (161)
	ILS CAT II	363 (49)	373 (59)	386 (72)	399 (85)
	ILS GP INOP	690 (376)			
Circling*		780	790	1010	

GS	fts	70	90	100	120	140	160
FAF-MAPT 6.6 NM	min:s	5:40	4:24	3:58	3:18	2:50	2:28
Rate of descent	ft/min	334	430	478	573	669	764
Distance to IOP DME	NM	6	5	4	3	2	1
Altitude (Height)	ft	2033 (1719)	1747 (1433)	1460 (1146)	1174 (860)	887 (573)	601 (287)

Cat III A approved. RVR not less than 200m.

\* Circling NORTH of airport only

For data tabulation see verso.

**BUCURESTI / Henri Coanda (LROP)  
ILS RWY 08R**

**AERONAUTICAL DATA TABULATION**

<b>ILS approach to RWY 08R from OBELA</b>	
<b>OBELA</b>	44°32'43.6"N 025°49'38.2"E
<b>FAP/FAF GP INOP</b>	44°33'05.2"N 025°54'15.6"E
<b>4.0 DME IOP (Height Check/Stepdown ILS GP INOP)</b>	44°33'28.5"N 025°59'18.4"E
<b>1.0 DME IOP (MAPT GP INOP)</b>	44°33'47.7"N 026°03'28.9"E
<b>THR RWY 08R</b>	44°33'52.78"N 026°04'36.29"E
<b>IOP LOC</b>	44°34'06.4"N 026°07'36.0"E
<b>OPE NDB</b>	44°34'29.2"N 026°12'40.5"E
<b>OPT VOR/DME</b>	44°35'32.6"N 026°33'36.6"E