

STANDARD DEPARTURE CHART  
INSTRUMENT (SID) - ICAO

TRANSITION ALTITUDE  
4000 FT

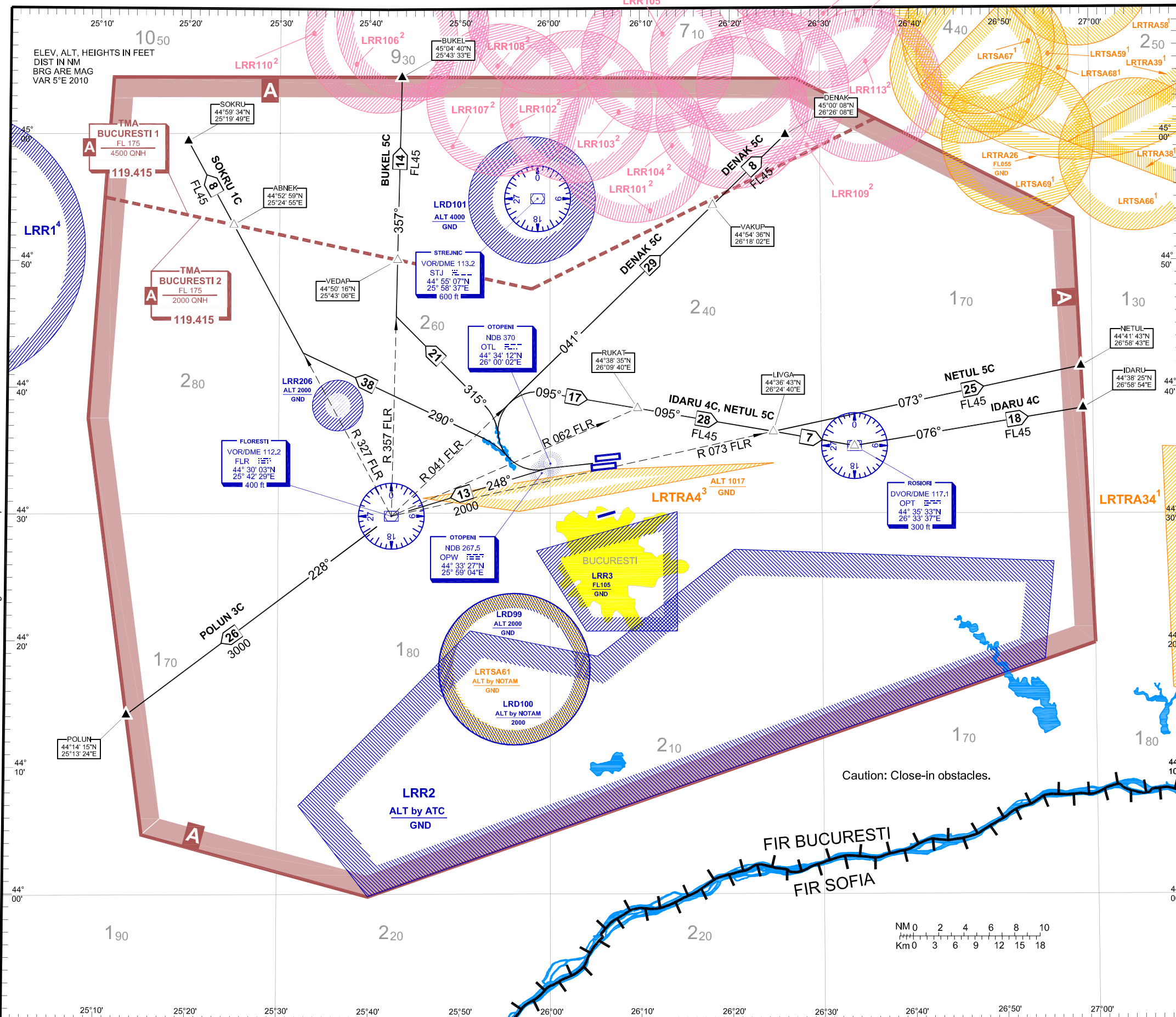
OTOPENI ATIS 118.500  
BUCURESTI VOLMET 126.800  
BUCURESTI APPROACH 119.415  
BUCURESTI APP ALTN 120.600

OTOPENI TWR 118.805  
OTOPENI TWR ALTN 120.900  
OTOPENI GND 121.855  
OTOPENI GND ALTN 121.700  
OTOPENI DEL 121.955

SECTOR LOMOS 122.030  
LOMOS ALTN 126.080  
KOMAN 129.755  
KOMAN ALTN 126.080  
ARGES 121.180  
ARGES ALTN 124.975  
NERDI 125.155  
NERDI ALTN 123.900

BUCUREȘTI / Henri Coandă (LROP)  
RWY 26R/L  
BUKEL 5C, DENAK 5C, IDARU 4C  
NETUL 5C, POLUN 3C, SOKRU 1C

Standard Instrument Departure Routes (SID) are also noise abatement routings.  
Strict adherence within the limit of performance criteria is mandatory.



DESIGNATOR DEPARTURE ROUTE	DEPARTURE ROUTE AND LEVEL INSTRUCTIONS / REMARKS
BUKEL 5C	To OTL/OPW NDB, turn RIGHT, BRG 315° OTL/OPW NDB, intercept RDL 357 FLR VOR/DME to BUKEL. Cross VEDAP at or above FL45 PDG min. 4.5% due to airspace structure. Not available for traffic to NEPOT.
DENAK 5C	To OTL/OPW NDB, turn RIGHT RDL 041 FLR VOR/DME to DENAK. PDG min. 4.2% due to airspace structure. Cross VAKUP at or above FL45.
IDARU 4C	To OTL/OPW NDB turn RIGHT, RDL 275 OPT VOR/DME, inbound to OPT VOR/DME, turn LEFT, RDL 076 OPT VOR/DME to IDARU. Cross IDARUat or above FL60.
NETUL 5C	To OTL/OPW NDB, turn RIGHT, intercept RDL 275 OPT VOR/DME inbound to LIVGA, turn LEFT, RDL 073 FLR VOR/DME to NETUL. Cross NETUL at or above FL60.
POLUN 3C	To OTL/OPW NDB, turn LEFT, RDL 068 FLR VOR/DME inbound to FLR VOR/DME, RDL 228 FLR VOR/DME to POLUN. PDG min. 3.6 due to airspace structure. Not available for traffic to MOPUG.
SOKRU 1C	To OTL/OPW NDB, turn RIGHT BRG 290°, intercept RDL 327 FLR VOR/DME to SOKRU PDG min 3.9% due to airspace structure. Not available for traffic to DIRER.

- NOTE: 1. Vertical limits are issued by NOTAM  
 2. Vertical limits  $\frac{FL255}{GND}$   
 3. During LRTRA4 activity, IFR flight is not affected  
 4. Vertical limits  
 $\frac{FL 60}{GND}$  for subsonic FLT  
 $\frac{FL 660}{GND}$  for supersonic FLT

**RADIO COMMUNICATION FAILURE PROCEDURE**  
 Set transponder to 7600, then:  
 - continue on assigned and acknowledged SID. After 2 minutes climb to FPL flight level.  
 - if being vectored, continue on assigned heading for 2 minutes, then proceed direct to last SID point climbing to FPL flight level.