

**AERODROME GROUND
MOVEMENT CHART - ICAO**

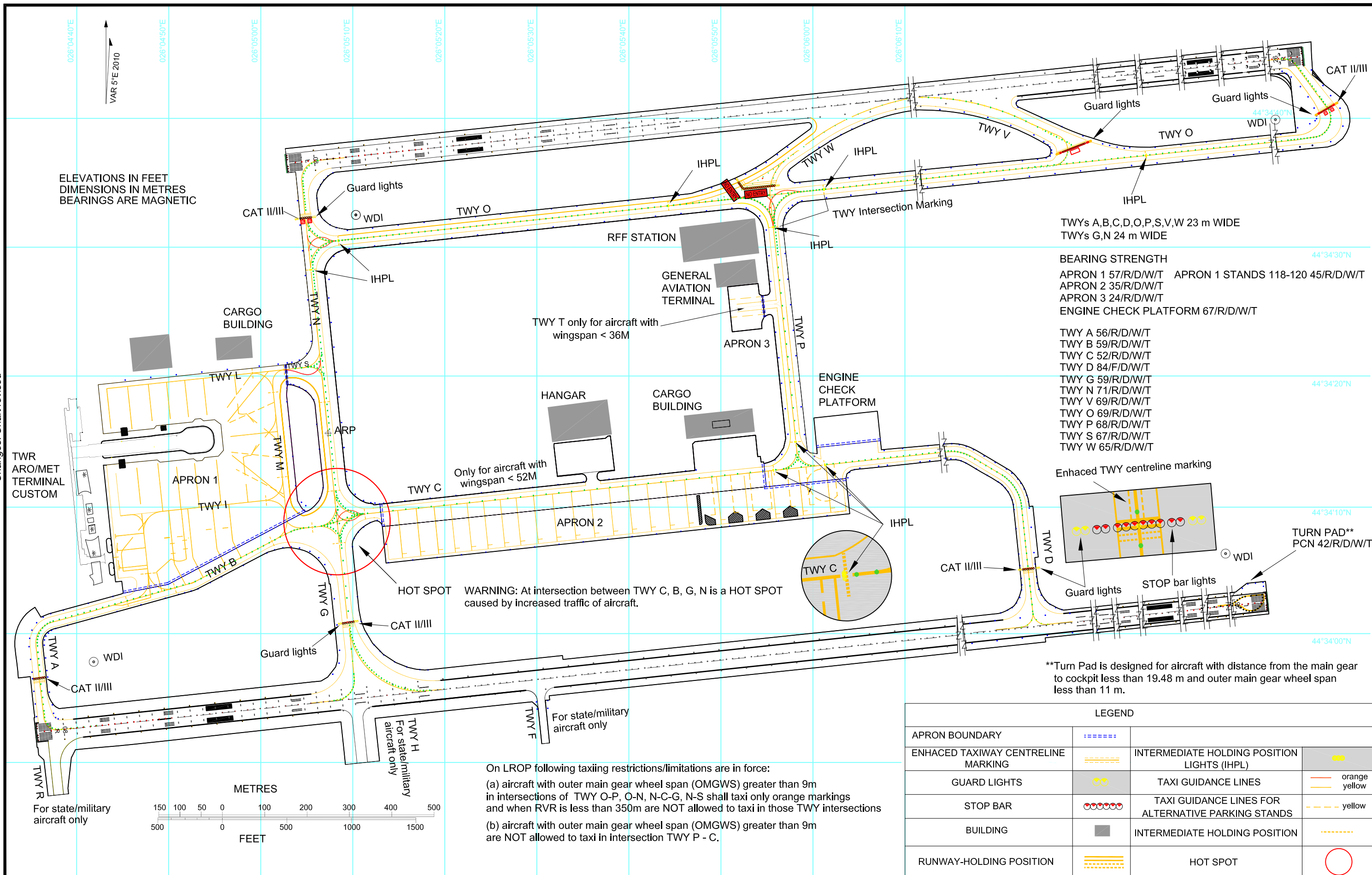
ARP ELEV
314 FT

APRON 1 ELEV 312 FT
APRON 2 ELEV 308 FT
APRON 3 ELEV 309 FT

OTOPENI TOWER 118.805
OTOPENI TOWER ALTN 120.900
OTOPENI GROUND 121.855
OTOPENI GROUND ALTN 121.700

OTOPENI CLEARANCE DELIVERY 121.955
OTOPENI CLEARANCE DELIVERY ALTN 121.700

BUCUREȘTI / Henri Coandă (LROP)



ELEVATIONS IN FEET
DIMENSIONS IN METRES
BEARINGS ARE MAGNETIC

TWYs A,B,C,D,O,P,S,V,W 23 m WIDE
TWYs G,N 24 m WIDE

BEARING STRENGTH
APRON 1 57/R/D/W/T APRON 1 STANDS 118-120 45/R/D/W/T
APRON 2 35/R/D/W/T
APRON 3 24/R/D/W/T
ENGINE CHECK PLATFORM 67/R/D/W/T

TWY A 56/R/D/W/T
TWY B 59/R/D/W/T
TWY C 52/R/D/W/T
TWY D 84/F/D/W/T
TWY G 59/R/D/W/T
TWY N 71/R/D/W/T
TWY V 69/R/D/W/T
TWY O 69/R/D/W/T
TWY P 68/R/D/W/T
TWY S 67/R/D/W/T
TWY W 65/R/D/W/T

Only for aircraft with wingspan < 52M
HOT SPOT WARNING: At intersection between TWY C, B, G, N is a HOT SPOT caused by increased traffic of aircraft.

**Turn Pad is designed for aircraft with distance from the main gear to cockpit less than 19.48 m and outer main gear wheel span less than 11 m.

On LROP following taxiing restrictions/limitations are in force:
(a) aircraft with outer main gear wheel span (OMGWS) greater than 9m in intersections of TWY O-P, O-N, N-C-G, N-S shall taxi only orange markings and when RVR is less than 350m are NOT allowed to taxi in those TWY intersections
(b) aircraft with outer main gear wheel span (OMGWS) greater than 9m are NOT allowed to taxi in intersection TWY P - C.

LEGEND			
APRON BOUNDARY	----	INTERMEDIATE HOLDING POSITION LIGHTS (IHPL)	●
ENHANCED TAXIWAY CENTRELINE MARKING	----	TAXI GUIDANCE LINES	— orange — yellow
GUARD LIGHTS	●●	TAXI GUIDANCE LINES FOR ALTERNATIVE PARKING STANDS	----
STOP BAR	●●●●	INTERMEDIATE HOLDING POSITION	----
BUILDING	■	HOT SPOT	○
RUNWAY-HOLDING POSITION	----		

Changes: Chart revised