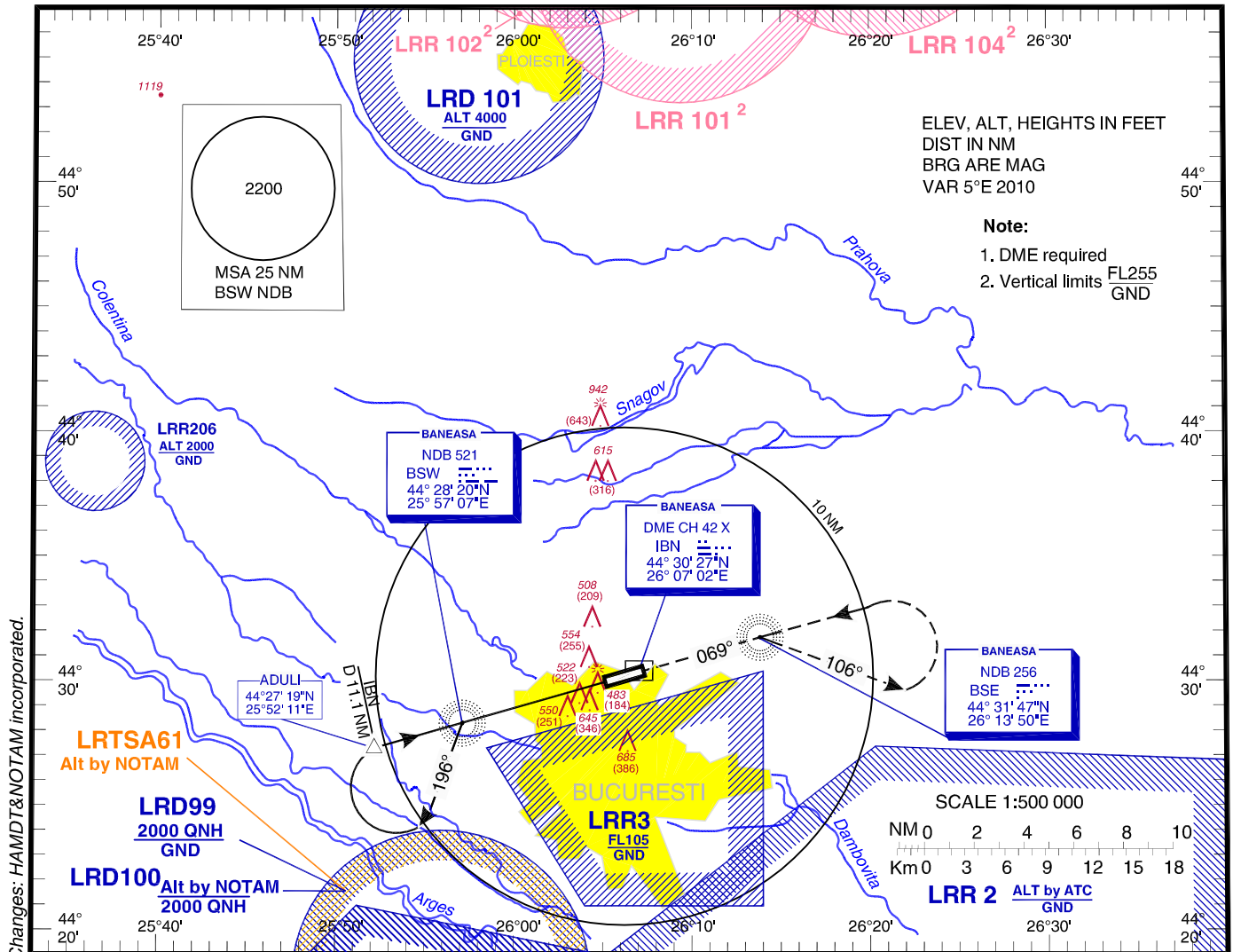


**INSTRUMENT** AERODROME ELEV. **299 FT**  
**APPROACH** HEIGHTS RELATED  
TO AD ELEV  
**CHART - ICAO**

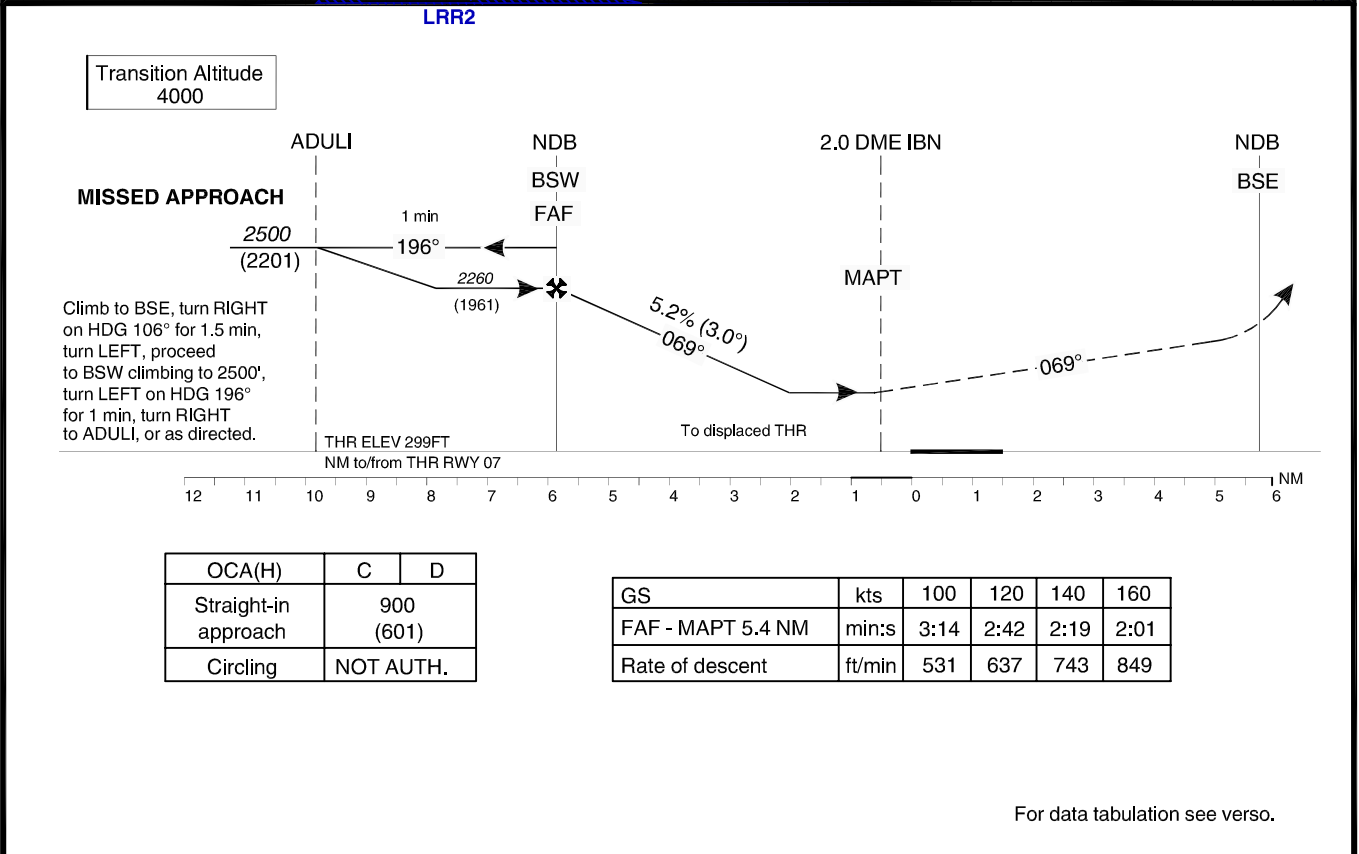
BANEASA TWR	125.205
BANEASA TWR ALTN	120.800
BANEASA GROUND	129.950
BANEASA ATIS	126.125

BUCURESTI VOLMET	126.800
BUCURESTI APPROACH	119.415
BUCURESTI DIRECTOR	127.155
BUCURESTI DIRECTOR ALTN	120.600

**BUCUREȘTI**  
**Băneasa-Aurel Vlaicu (LRBS)**  
**NDB RWY 07**  
**CAT C / D**



Changes: HAMDT&NOTAM incorporated.



**BUCURESTI / Baneasa-Aurel Vlaicu (LRBS)**  
**NDB RWY 07, CAT C/D**

**AERONAUTICAL DATA TABULATION**

<b>NDB approach to RWY 07, CAT C/D from ADULI, BSW NDB</b>	
<b>BSW NDB (IAF/FAF)</b>	44°28'19.5"N 025°57'07.2"E
<b>ADULI (IAF)</b>	44°27'18.6"N 025°52'11.4"E
<b>2.0 D IBN (MAPT)</b>	44°29'49.8"N 026°04'22.9"E
<b>THR RWY 07</b>	44°29'59.27"N 026°05'08.68"E
<b>BSE NDB</b>	44°31'46.7"N 026°13'49.9"E

Final approach descent angle: 3.00°