

RNAV (DME/DME)  
STANDARD DEPARTURE CHART -  
INSTRUMENT (SID) - ICAO

TRANSITION ALTITUDE  
4000 ft

BANEASA TWR 125.205  
BANEASA TWR ALTN 120.800  
BANEASA GND 129.950

BANEASA ATIS 126.125  
BUCURESTI VOLMET 126.800  
BUCURESTI APPROACH 119.415  
BUCURESTI APP ALTN 120.600

SECTOR LOMOS 122.030  
LOMOS ALTN 126.980  
KOMAN 129.750  
KOMAN ALTN 126.080  
ARGES 121.180  
ARGES ALTN 124.975  
NERDI 125.155  
NERDI ALTN 123.900

BUCUREȘTI / Băneasa-Aurel Vlaicu  
RWY 07 (LRBS)  
BUKEL 1L DENAK 1L IDARU 1L  
NETUL 1L POLUN 1L SOKRU 1L

Standard Instrument Departure Routes (SID) are also noise abatement routings.  
Strict adherence within the limit of performance criteria is mandatory.

RADIO COMMUNICATION FAILURE PROCEDURE

Set transponder to 7600, then:  
a) continue on assigned and acknowledged SID. After 2 minutes climb to FPL flight level.  
b) if being vectored, continue on assigned heading for 2 minutes, then proceed direct to last SID WP climbing to FPL flight level.

DESIGNATOR	ROUTING	REMARKS
BUKEL 1L	BS772[K250-] - BS775 - ETUXA - BUKEL	Not available for traffic to NEPOT. Close-in obstacles.
DENAK 1L *	BS772[K250-] - BS775 - ETUXA - EKSUN - DENAK[FL110+]	Close-in obstacles. PDG min 4.4% until DENAK due to airspace structure.
IDARU 1L	BS771 - BS773 - BS774 - IDARU	Close-in obstacles.
NETUL 1L	BS771 - BS773 - BS774 - NETUL	Close-in obstacles.
POLUN 1L	BS771[K250-] - BS776 - USIRO - POLUN	Not available for traffic to MOPUG. Close-in obstacles.
SOKRU 1L	BS772[K250-] - BS775[K250-] - GOMDI - SOKRU	Not available for traffic to DIRER. Close-in obstacles.

\*if unable to comply, contact ATC before start-up  
Underlined WPTs are flyover

NOTE: 1. Vertical limits are issued by NOTAM

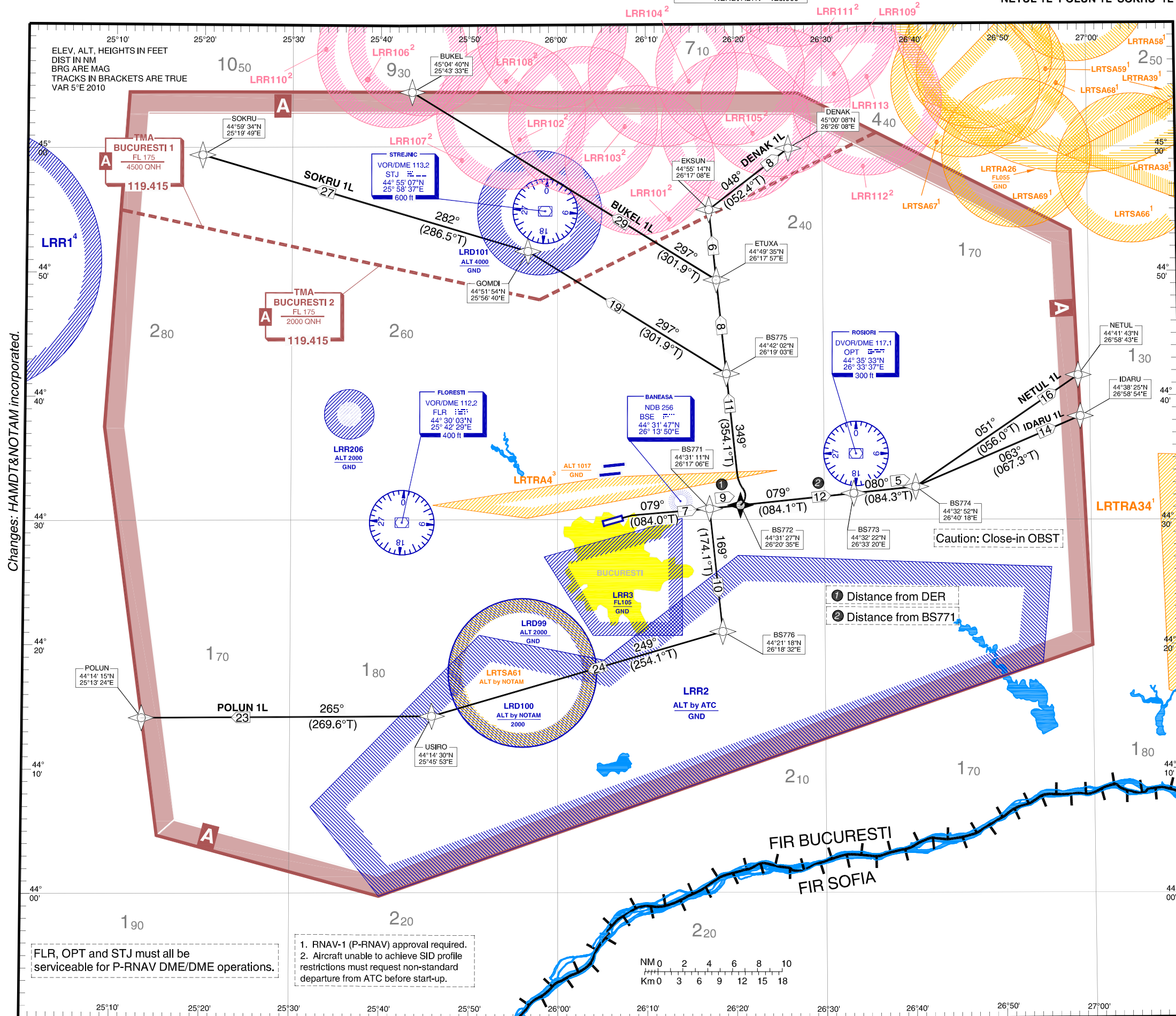
2. Vertical limits  $\frac{FL255}{GND}$

3. During LRTRA4 activity, IFR flight is not affected

4. Vertical limits

$\frac{FL 60}{GND}$  for subsonic FLT

$\frac{FL660}{GND}$  for supersonic FLT



1. RNAV-1 (P-RNAV) approval required.  
2. Aircraft unable to achieve SID profile restrictions must request non-standard departure from ATC before start-up.

FLR, OPT and STJ must all be serviceable for P-RNAV DME/DME operations.

Changes: HAMDT&NOTAM incorporated.

## LIST OF WAYPOINTS

Waypoint name	Latitude	Longitude	Type
1	2	3	4
BS771	443111.407N	0261706.234E	fly-by
BS772	443126.824N	0262034.850E	flyover
BS773	443222.417N	0263319.620E	fly-by
BS774	443252.190N	0264017.642E	fly-by
BS775	444201.604N	0261903.250E	fly-by
BS776	442117.744N	0261831.988E	fly-by
BUKEL	450440.121N	0254332.572E	fly-by
DENAK	450008.205N	0262608.489E	fly-by
EKSUN	445513.731N	0261708.121E	fly-by
ETUXA	444934.939N	0261757.475E	fly-by
GOMDI	445154.285N	0255639.717E	fly-by
IDARU	443824.506N	0265854.475E	fly-by
NETUL	444143.375N	0265842.826E	fly-by
POLUN	441414.722N	0251324.144E	fly-by
SOKRU	445934.136N	0251949.048E	fly-by
USIRO	441430.397N	0254552.599E	fly-by