

STANDARD DEPARTURE CHART -  
INSTRUMENT (SID) - ICAO

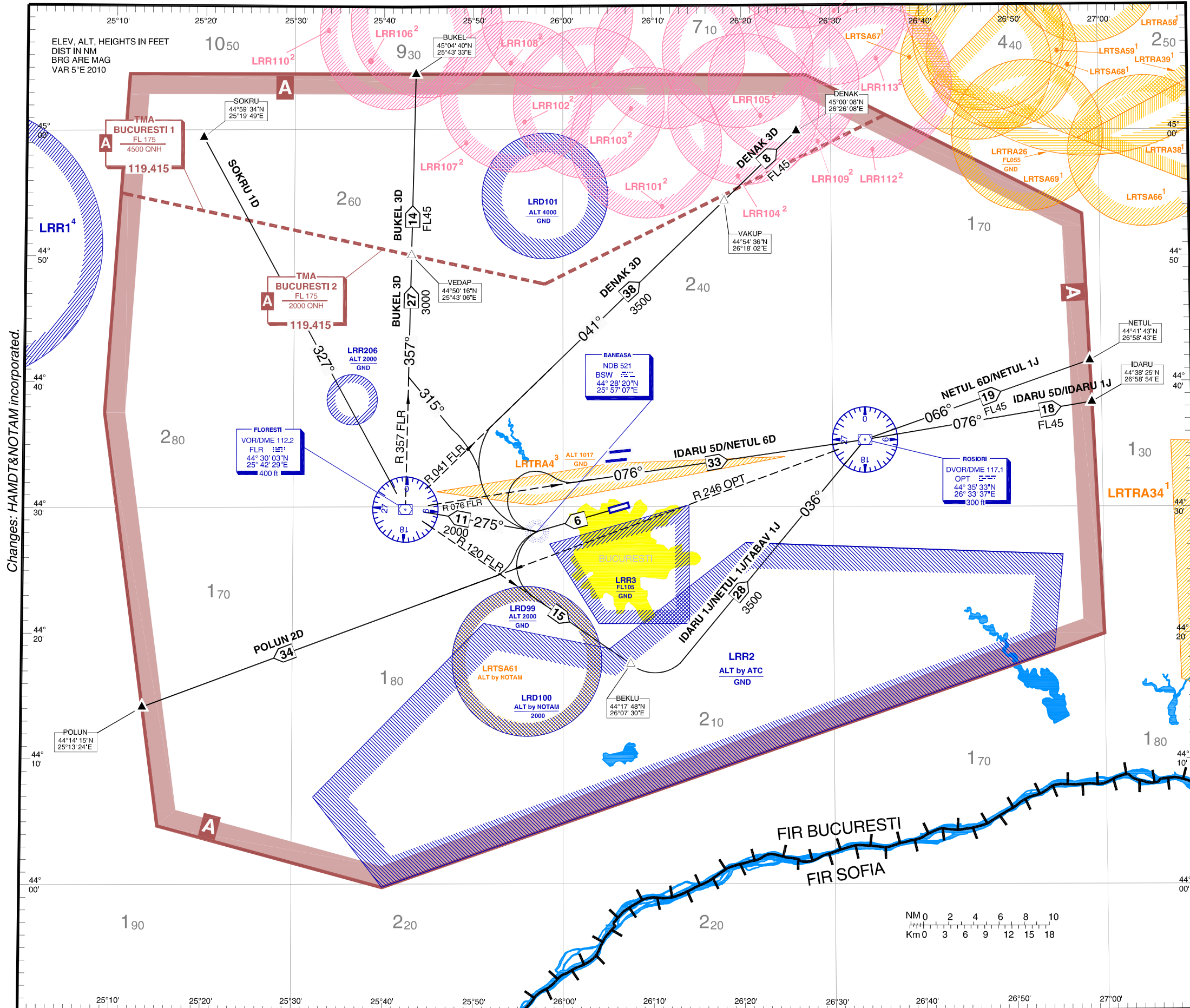
TRANSITION ALTITUDE  
4000 FT

BANEASA TWR 125.205  
BANEASA TWR ALTN 120.800  
BANEASA GND 129.950

BANEASA ATIS 126.125  
BUCURESTI VOLMET 126.800  
BUCURESTI APPROACH 119.415  
BUCURESTI APP ALTN 120.600

SECTOR LOMOS 122.030  
LOMOS ALTN 126.080  
KOMAN 129.755  
KOMAN ALTN 126.080  
ARGES ALTN 121.180  
ARGES ALTN 124.975  
NERDI 125.155  
NERDI ALTN 123.900

BUCUREȘTI / Băneasa-Aurel Vlaicu  
RWY 25 (LRBS)  
BUKEL 3D DENAK 3D IDARU 5D IDARU 1J NETUL 6D  
NETUL 1J POLUN 2D SOKRU 1D



Standard Instrument Departure Routes (SID) are also noise abatement routings. Strict adherence within the limit of performance criteria is mandatory.

DESIGNATOR DEPARTURE ROUTE	DEPARTURE ROUTE AND LEVEL INSTRUCTIONS / REMARKS
BUKEL 3D	To BSW NDB or 2000 QNH, whichever is later, turn RIGHT, intercept BRG 315 from BSW NDB, intercept RDL 357 FLR VOR/DME to BUKEL. PDG min 3.8% due to airspace structure. Not available for traffic to NEPOT.
DENAK 3D	To BSW NDB or 2000 QNH, whichever is later, turn RIGHT, intercept RDL 041 FLR VOR/DME to DENAK. Cross DENAK at or above minimum En-Route FL.
IDARU 5D	To BSW NDB or 2000 QNH, whichever is later, turn RIGHT, intercept RDL 256 OPT VOR/DME inbound to OPT VOR/DME, intercept RDL 076 OPT VOR/DME to IDARU. Cross IDARU at or above FL60.
IDARU 1J	To BSW NDB, turn LEFT, RDL 120 FLR VOR/DME to BEKLU, turn LEFT, RDL 216 OPT VOR/DME inbound to OPT VOR/DME, intercept RDL 076 OPT VOR/DME to IDARU. Cross IDARU at or above FL60.
NETUL 6D	To BSW NDB or 2000 QNH, whichever is later, turn RIGHT, intercept RDL 256 OPT VOR/DME inbound to OPT VOR/DME, R066 OPT VOR/DME to NETUL. Cross NETUL at or above FL60.
NETUL 1J	To BSW NDB, turn LEFT, RDL 120 FLR VOR/DME to BEKLU, turn LEFT, RDL 216 OPT VOR/DME inbound to OPT VOR/DME, intercept RDL 066 OPT VOR/DME to NETUL. Cross NETUL at or above FL60.
POLUN 2D	To BSW NDB, turn LEFT, intercept RDL 246 OPT VOR/DME to POLUN climbing at or above FL100. Not available for traffic to MOPUG. PDG min 4.0% due to airspace structure.
SOKRU 1D	To BSW NDB or 2000 QNH, whichever is later, intercept RDL 095 FLR VOR/DME inbound to FLR VOR/DME, turn RIGHT, intercept RDL 327 FLR VOR/DME to SOKRU. PDG min 4.0% due to airspace structure. Not available for traffic to DIRER.

- NOTE: 1. Vertical limits are issued by NOTAM
2. Vertical limits  $\frac{FL255}{GND}$
3. During LRTRA4 activity, IFR flight is not affected
4. Vertical limits
- $\frac{FL 60}{GND}$  for subsonic FLT
  - $\frac{FL 660}{GND}$  for supersonic FLT

**RADIO COMMUNICATION FAILURE PROCEDURE**  
Set transponder to 7600, then:  
- continue on assigned and acknowledged SID. After 2 minutes climb to FPL flight level.  
- if being vectored, continue on assigned heading for 2 minutes, then proceed direct to last SID point climbing to FPL flight level.