

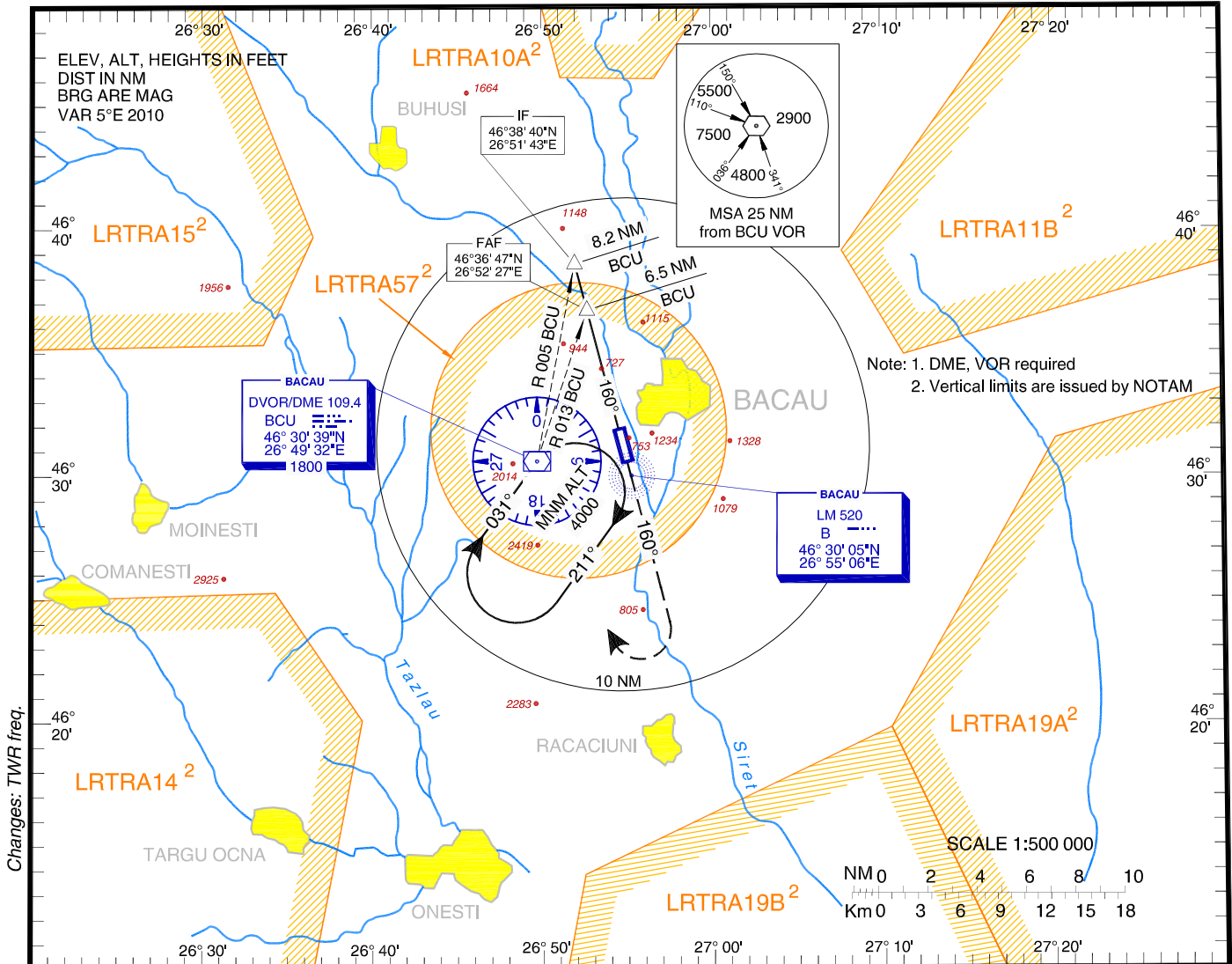
BACĂU / George Enescu

INSTRUMENT APPROACH AERODROME ELEV. **607 ft**
CHART - ICAO HEIGHTS RELATED TO AD ELEV

BACAU TOWER 120.980
BACAU TOWER ALTN 118.600

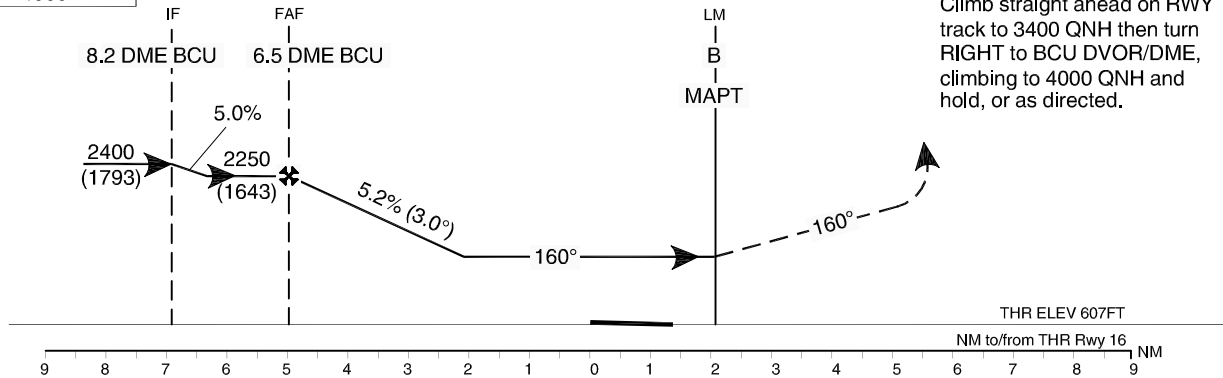
(LRBC)

NDB RWY 16



Changes: TWR freq.

Transition Altitude
4000



OCA(H)	A	B	C	D
Straight-in approach	1360 (753)			
Circling	1630	2640	2820	

GS	kts	70	90	100	120	140	160
FAF-MAPT 6.9 NM	min:s	5:55	4:36	4:08	3:27	2:57	2:35
Rate of descent	ft/min	372	478	531	637	743	849
For data tabulation see verso.							

BACĂU / George Enescu (LRBC)
NDB RWY 16

AERONAUTICAL DATA TABULATION

NDB approach to RWY 16	
Fix/Point	Coordinates
IF – BRG 005.35° / 8.16 NM BCU	46°38'40.3"N 026°51'42.8"E
FAF – BRG 012.94°/ 6.46 NM BCU	46°36'47.1"N 026°52'27.5"E
B LM (MAPT)	46°30'05.2"N 026°55'05.6"E
THR RWY 16	46°31'57.74"N 026°54'21.36"E
BCU DVOR/DME	46°30'39.3"N 026°49'32.0"E

Final approach descent angle: 3.00°