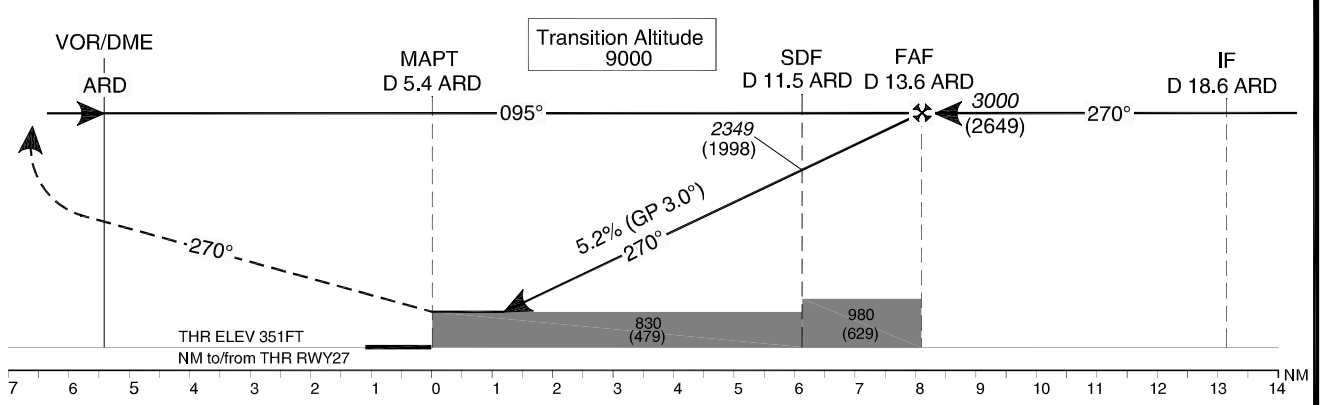
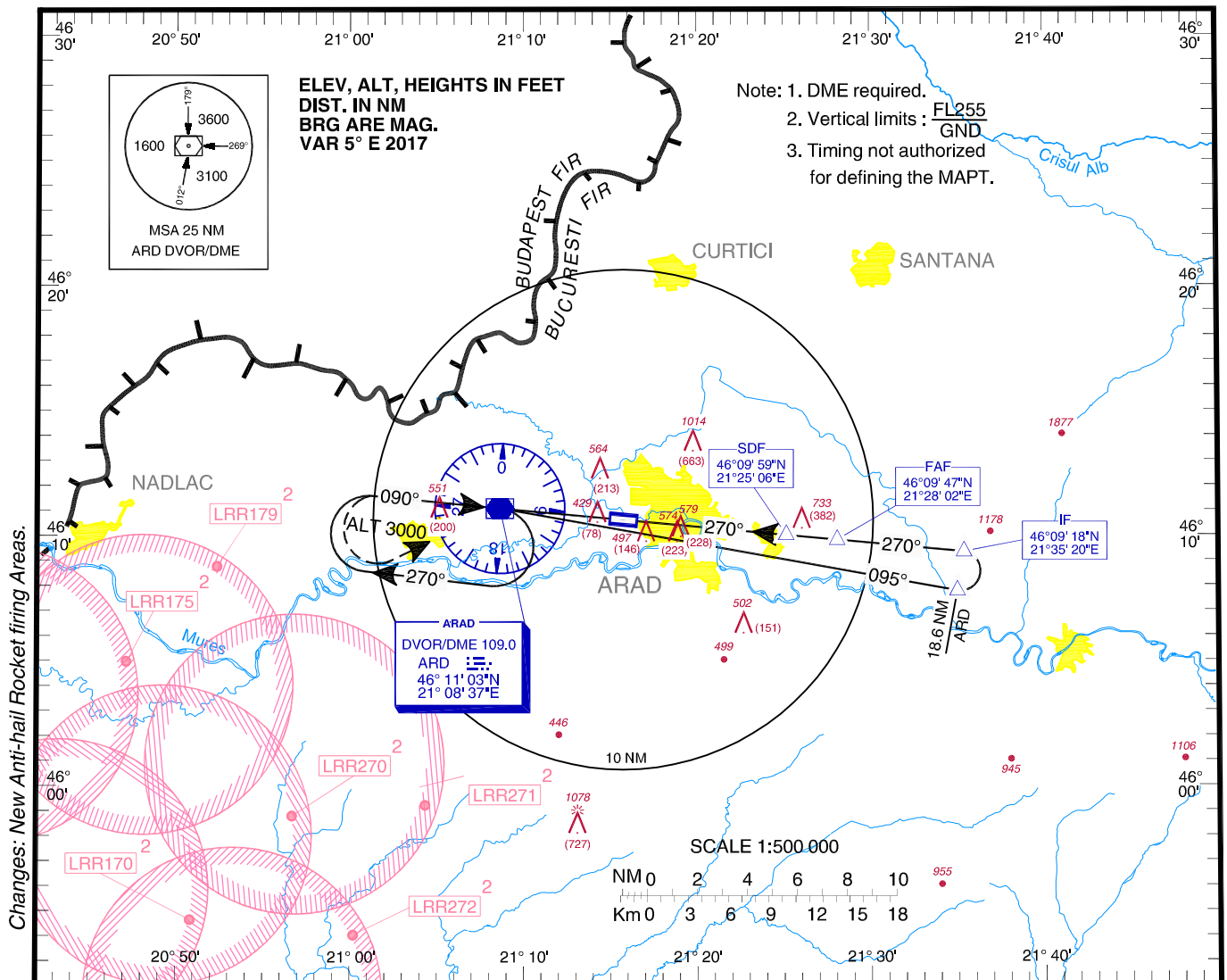


**INSTRUMENT APPROACH
CHART - ICAO**

AERODROME ELEV. 353 FT
HEIGHTS RELATED TO THR ELEV 351 FT

Arad Approach	123.530
Arad Approach ALTN	126.350
Arad Tower	118.230
Arad Tower ALTN	130.200

ARAD / Arad (LRAR)
VOR RWY 27
CAT A, B



MISSED APPROACH

Climb straight ahead to ARD DVOR; on R270 ARD climb to 2300; LT, direct to ARD DVOR climbing to 3000 and join holding

OCA(H)		A	B
Straight-in approach	FAF-SDF	980 (629)	
	SDF-MAPT	830 (479)	
Circling		850	900

GS	kts	80	100	120
FAF-MAPT 8.2 NM	min:s	6:09	4:55	4:06
Rate of descent	ft/min	420	530	640

Dist to ARD DME	NM	6	7	8	9	10	11	11.5	12	13
Dist to THR 27	NM	0.6	1.6	2.6	3.6	4.6	5.6	6.1	6.6	7.6
Altitudes (Heights)	ft	597 (246)	916 (565)	1234 (883)	1553 (1202)	1873 (1520)	2190 (1839)	2349 (1998)	2508 (2157)	2826 (2475)

For data tabulation see verso

ARAD / Arad (LRAR)
VOR RWY 27, CAT A, B

AERONAUTICAL DATA TABULATION

VOR approach to RWY 27 from ARD DVOR/DME	
Fix/Point	Coordinates
ARD DVOR/DME (IAF)	46°11'02.7"N 021°08'37.0"E
18.6 D ARD – Outbound 094.96° ARD VOR	46°07'44.0"N 021°34'57.4"E
18.6 D ARD (IF) – BRG 270.34° ARD VOR	46°09'18.2"N 021°35'19.7"E
13.6 D ARD (FAF) – BRG 270.25° ARD VOR	46°09'47.4"N 021°28'02.0"E
11.5 D ARD (SDF) – BRG 270.22° ARD VOR	46°09'59.0"N 021°25'06.1"E
5.4 D ARD (MAPT) – BRG 270.11° ARD VOR	46°10'33.1"N 021°16'21.6"E
THR RWY 27	46°10'33.14"N 021°16'21.34"E

Final approach descent angle: 3.00°