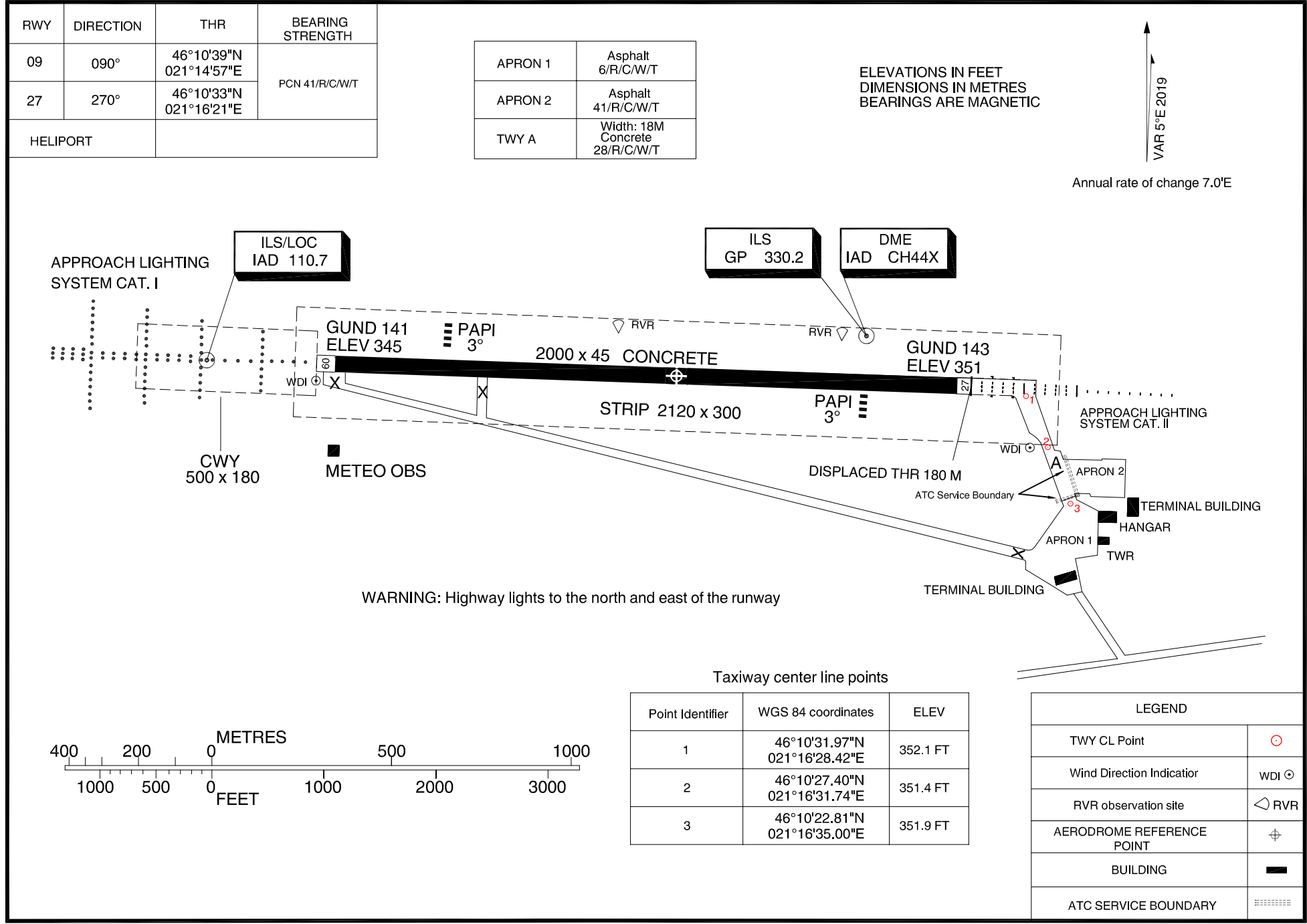


Changes: TWY CL points



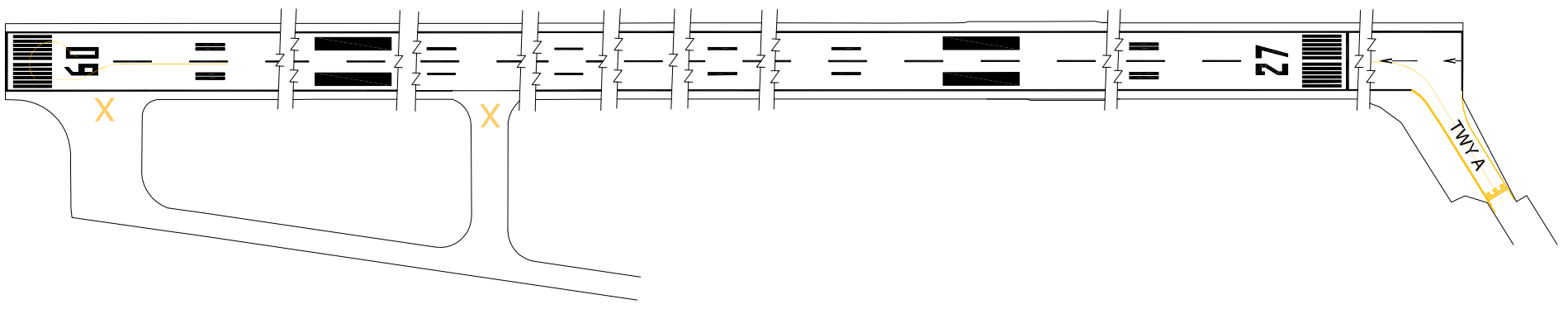
AERODROME CHART - ICAO
46° 10' 36" N
021° 15' 43" E

ELEV 353FT

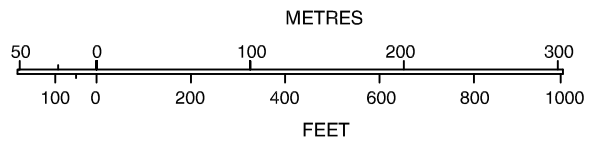
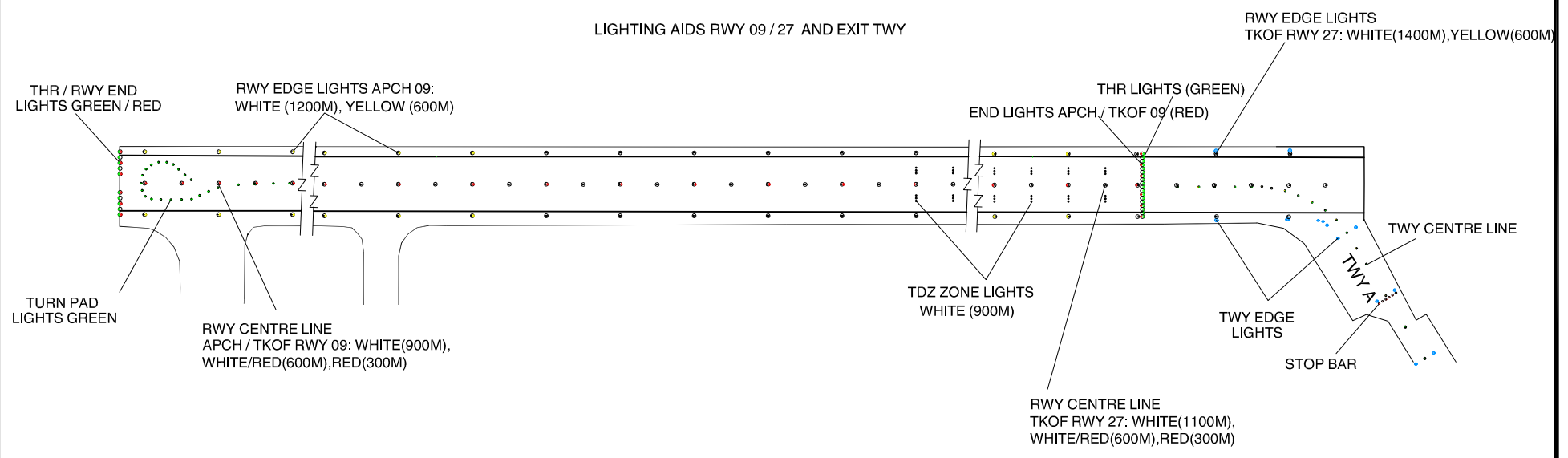
Arad Tower 118,230
Arad Tower ALTN 130,200

ARAD / Arad (LRAR)

MARKING AIDS RWY 09 / 27 AND EXIT TWY



LIGHTING AIDS RWY 09 / 27 AND EXIT TWY



LEGEND	
AERODROME REFERENCE POINT	⊕
TAXI HOLDING POSITION	⋮
BUILDING	■

Changes: RWY marking.