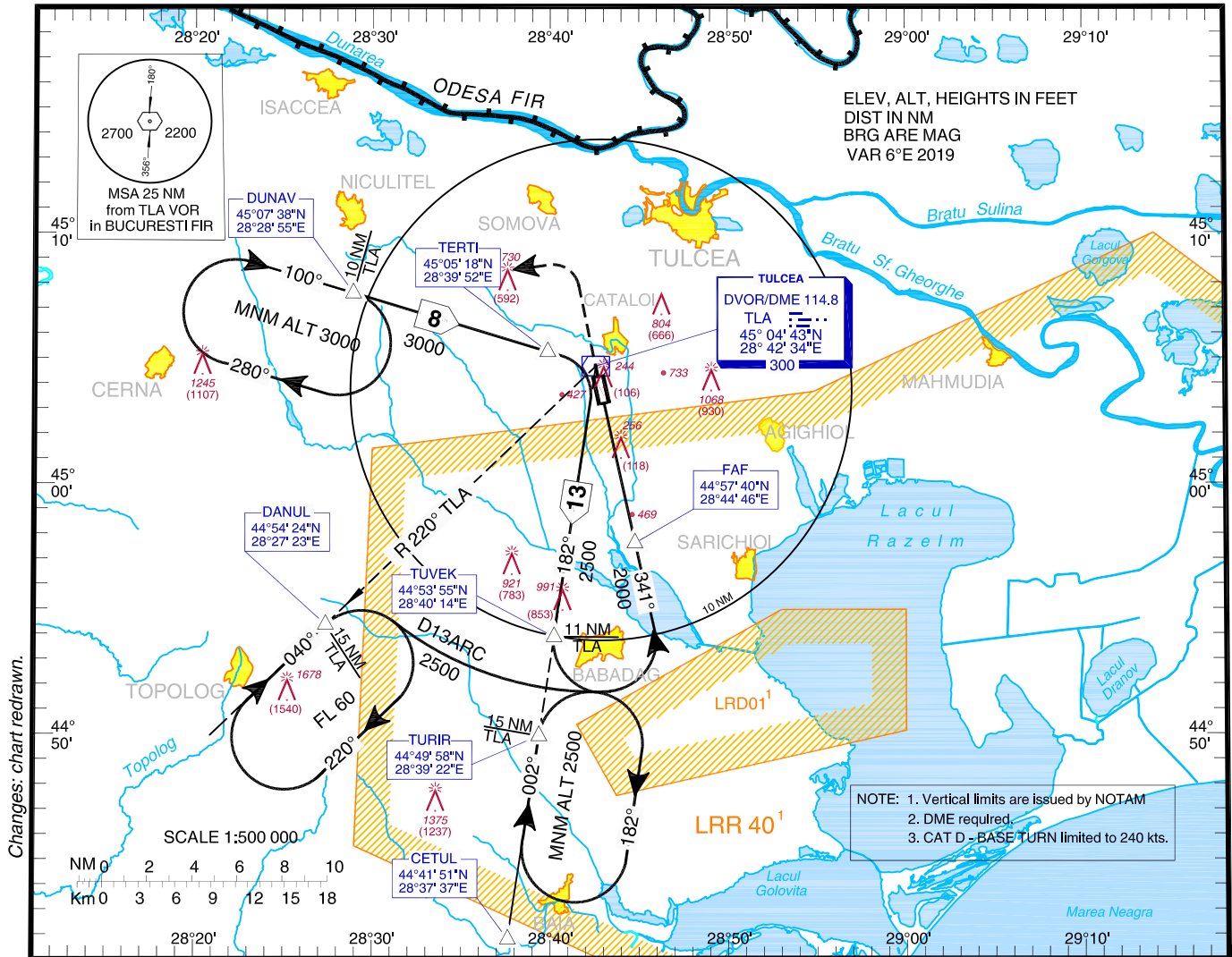


**INSTRUMENT APPROACH  
CHART - ICAO**

**AERODROME ELEV. 200 ft**  
HEIGHTS RELATED TO  
THR RWY 34 ELEV **138 ft**

**TULCEA / DELTA DUNĂRII (LRTC)**  
TULCEA TOWER 119.755  
TULCEA TWR ALTN 120.300

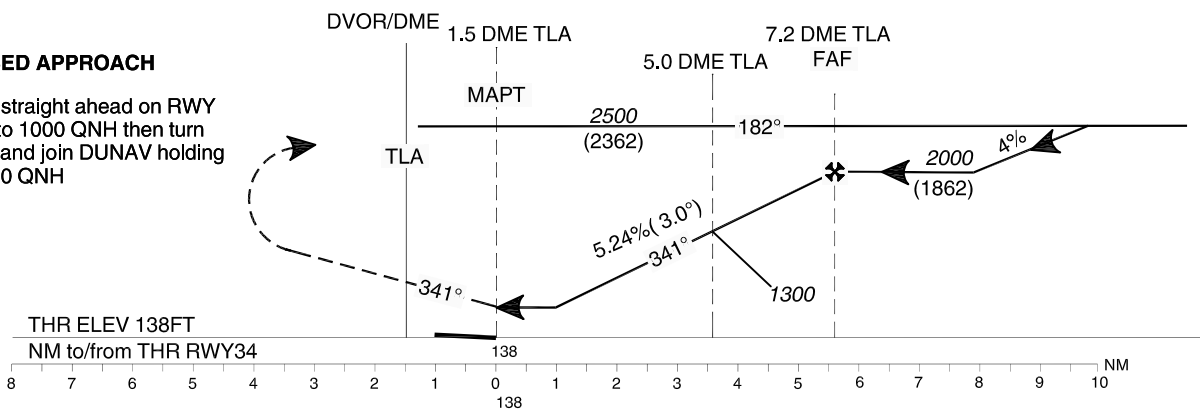
**VOR  
RWY 34**



Transition Altitude  
3000

**MISSED APPROACH**

Climb straight ahead on RWY track to 1000 QNH then turn LEFT and join DUNAV holding at 3000 QNH



OCA(H)	A	B	C	D
Straight-in Approach	510 (372)			
Circling	1200	1300	1470	

	kts	70	90	100	120	140	160
FAF - MAPT 5.7 NM	min:s	4:53	3:48	3:25	2:51	2:27	2:08
Rate of descent	ft/min	372	478	531	637	743	849

Dist to TLA	NM	3	4	5	6	7
Altitudes	ft	664	982	1300	1619	1937

For data tabulation see verso.

**TULCEA / DELTA DUNĂRII (LRTC)  
VOR RWY 34**

**AERONAUTICAL DATA TABULATION**

<b>VOR Approach to RWY34 from TURIR, DANUL, DUNAV</b>	
<b>Fix/Point</b>	<b>Coordinates</b>
<b>TLA DVOR/DME</b>	45°04'43.3"N 028°42'34.2"E
<b>CETUL</b> - BRG 002.33 ° / 23.14NM TLA	44°41'51.0"N 028°37'37.0"E
<b>TURIR</b> - BRG 002.31 ° / 14.92NM TLA	44°49'58.2"N 028°39'22.3"E
<b>DANUL</b> - R 219.70 ° / 14.92NM TLA	44°54'24.1"N 028°27'22.6"E
<b>DUNAV</b> - BRG 100.37 ° / 10.10NM TLA	45°07'37.8"N 028°28'55.2"E
<b>TERTI</b> - BRG 100.37 ° / 2.00NM TLA	45°05'18.0"N 028°39'52.1"E
<b>TUVEK</b> - BRG 182.28 ° / 10.92NM TLA	44°53'55.4"N 028°40'13.5"E
<b>FAF</b> - BRG 341.05 ° / 7.22NM TLA	44°57'40.1"N 028°44'46.1"E
<b>D 5.0 TLA</b> (Check point)	44°59'50.4"N 028°44'05.6"E
<b>THR RWY 34 (MAPT)</b>	45°03'14.96"N 028°43'01.80"E

Final approach descent angle: 3.00°