

AERODROME ELEV. 348 ft

TIMIȘOARA / Traian Vuia (LRTR)

INSTRUMENT APPROACH

HEIGHTS RELATED TO AD ELEV.

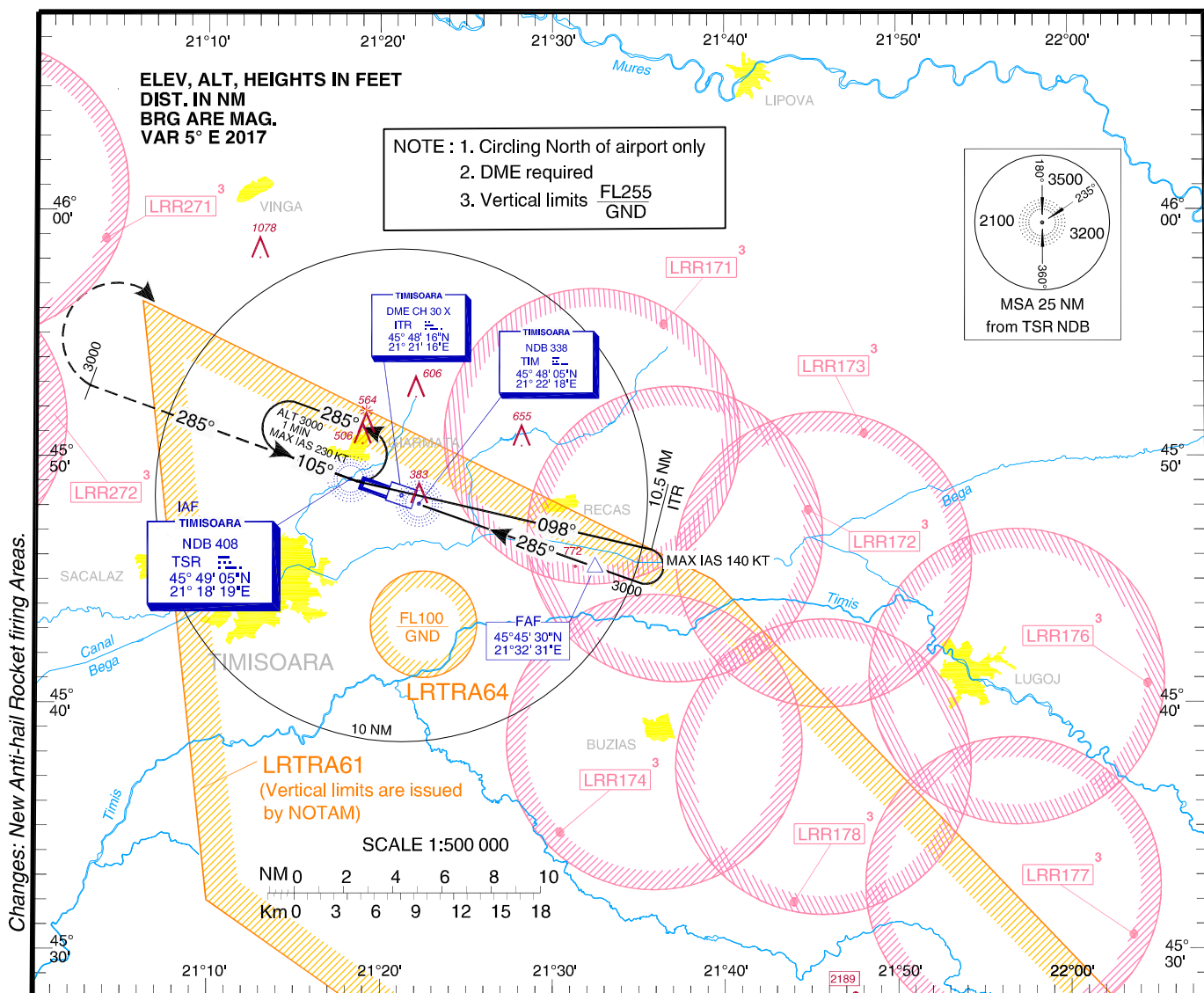
ARAD APPROACH	123.530
ARAD APPROACH ALTN	126.350
TIMIȘOARA TOWER	120.105
TIMIȘOARA TOWER ALTN	129.450
TIMIȘOARA ATIS	123.125

NDB

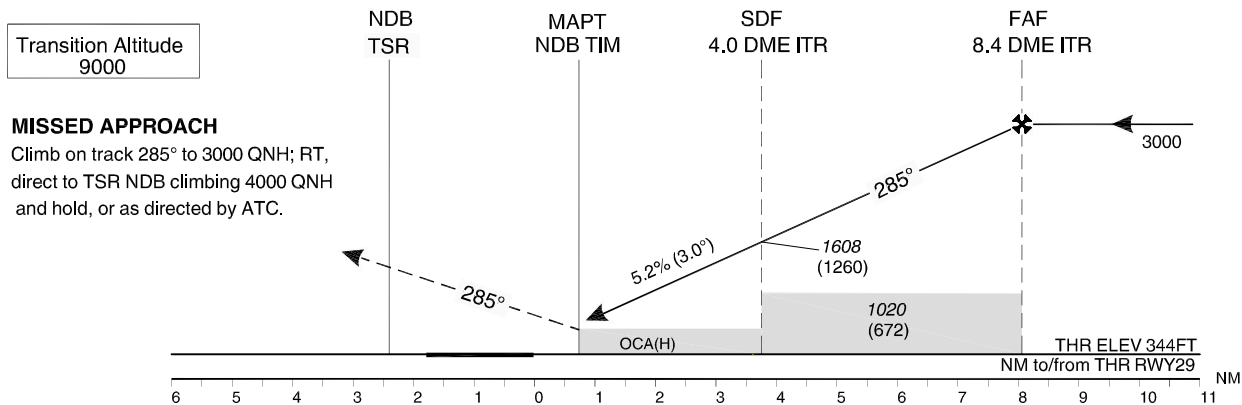
RWY 29

CAT A, B

CHART - ICAO



Changes: New Anti-hail Rocket firing Areas.



Transition Altitude
9000

MISSED APPROACH
Climb on track 285° to 3000 QNH; RT, direct to TSR NDB climbing 4000 QNH and hold, or as directed by ATC.

OCA(H)	A	B
Straight-in Approach	630 (282)	
Circling	810	860

GS	kts	70	90	100	120
FAF - MAPT 7.6 NM	min:s	6:30	5:04	4:33	3:48
Rate of descent (5.2%)	ft/min	372	478	531	637

Dist to ITR DME	NM	1.0	2.0	3.0	4.0	5.0	6.0	7.0	8.0
Dist to THR 29	NM	0.8	1.8	2.8	3.8	4.8	5.8	6.8	7.8
Altitude (Height)	FT	653 (305)	971 (623)	1290 (942)	1608 (1260)	1927 (1579)	2245 (1897)	2564 (2216)	2882 (2534)

Timing not authorised for defining MAPT.

For data tabulation see verso

TIMISOARA / Traian Vuia (LRTR)
NDB RWY 29, CAT A, B

AERONAUTICAL DATA TABULATION

NDB Approach to RWY 29, CAT A, B	
Fix/Point	Coordinates
TSR NDB (IAF)	45°49'04.7"N 021°18'19.5"E
TIM NDB (MAPt)	45°48'04.7"N 021°22'18.4"E
ITR DME	45°48'16.2"N 021°21'15.7"E
10.5 D ITR – BRG 097.57° TSR NDB	45°46'17.9"N 021°35'48.8"E
FAF – BRG 284.54° TSR NDB / D 8.35 ITR	45°45'30.3"N 021°32'30.8"E
SDF - BRG 284.56° TSR NDB / D 4.00 ITR	45°46'58.7"N 021°26'40.4"E
THR RWY 29	45°48'16.24"N 021°21'32.61"E

Final approach descent angle: 3.00°