

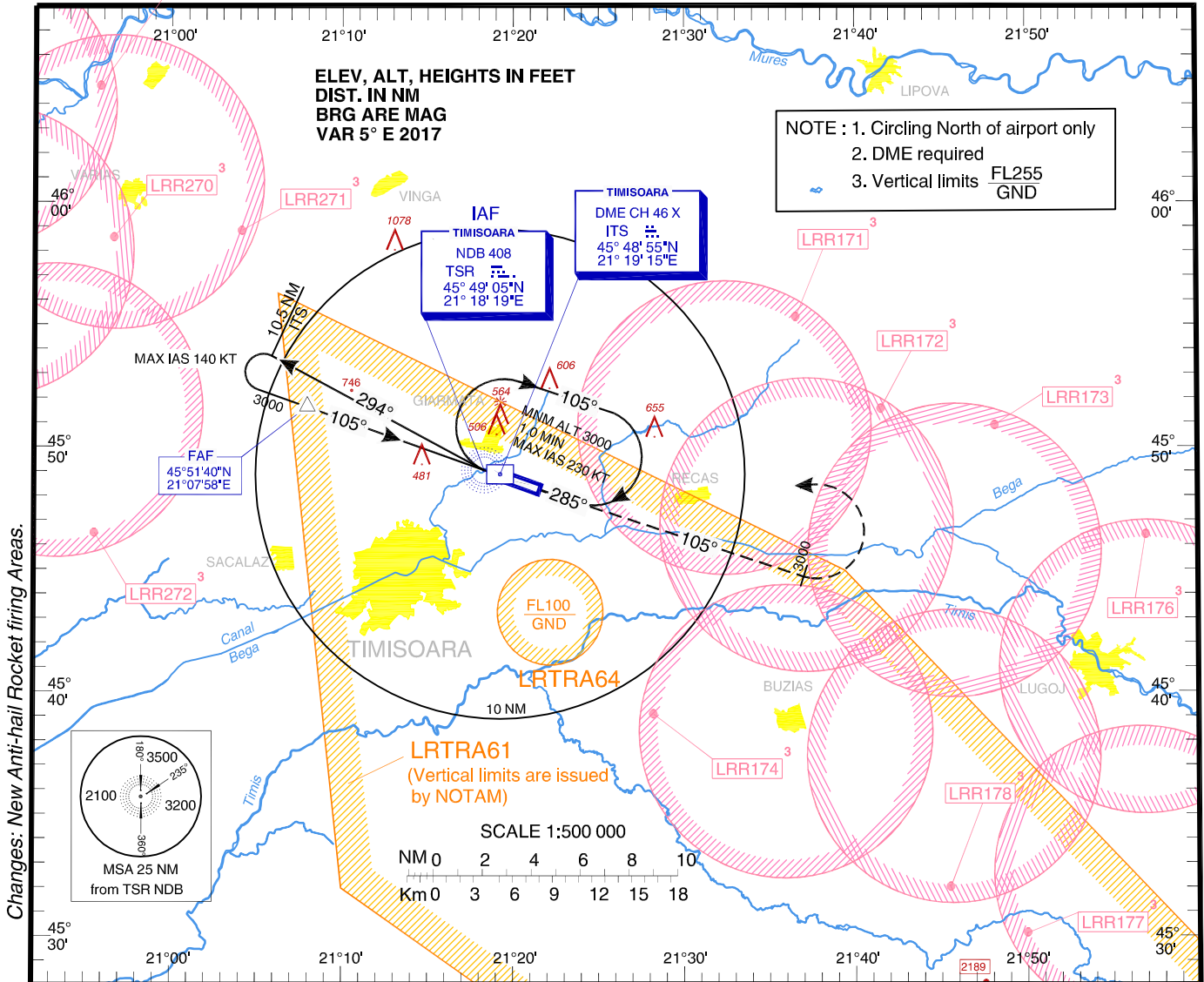
**INSTRUMENT APPROACH
CHART - ICAO**

AERODROME ELEV. 348 ft
HEIGHTS RELATED TO AD ELEV.

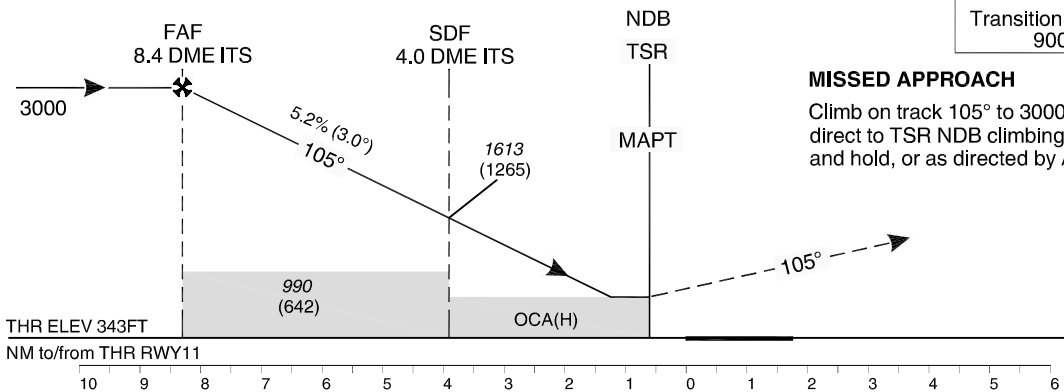
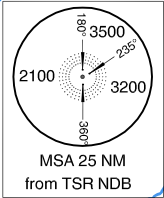
TIMIȘOARA / Traian Vuia (LRTR)

ARAD APPROACH	123.530
ARAD APPROACH ALTN	126.350
TIMIȘOARA TOWER	120.105
TIMIȘOARA TOWER ALTN	129.450
TIMIȘOARA ATIS	123.125

**NDB
RWY 11
CAT A, B**



Changes: New Anti-hail Rocket firing Areas.



MISSED APPROACH

Climb on track 105° to 3000 QNH; LT, direct to TSR NDB climbing 4000 QNH and hold, or as directed by ATC.

OCA(H)	A	B
Straight-in Approach	730 (382)	
Circling	810	860

GS	kts	70	90	100	120
FAF - MAPT 7.7 NM	min:s	6:35	5:07	4:37	3:51
Rate of descent (5.2%)	ft/min	372	478	531	637

Dist to ITS DME	NM	8.0	7.0	6.0	5.0	4.0	3.0	2.0
Dist to THR 11		7.8	6.8	5.8	4.8	3.8	2.8	1.8
Altitude (Height)	FT	2887 (2539)	2568 (2220)	2250 (1902)	1931 (1583)	1613 (1265)	1295 (947)	976 (628)

Timing not authorized for defining MAPT

For data tabulation see verso



TIMIȘOARA / Traian Vuia (LRTR)
NDB RWY 11, CAT A,B

AERONAUTICAL DATA TABULATION

NDB Approach to RWY 11, CAT A, B	
Fix/Point	Coordinates
TSR NDB (IAF, MAPT)	45°49'04.7"N 021°18'19.5"E
ITS DME	45°48'55.0"N 021°19'15.4"E
10.5 D ITS – BRG 293.64° TSR NDB	45°53'49.3"N 021°05'54.9"E
FAF – BRG 104.56° TSR NDB / D 8.35 ITS	45°51'40.0"N 021°07'58.4"E
SDF – BRG 104.55° TSR NDB / D 4.00 ITS	45°50'12.1"N 021°13'50.4"E
THR RWY 11	45°48'54.57"N 021°19'00.06"E

Final approach descent angle: 3.00°