

AERODROME ELEV. **348 ft**

**TIMIȘOARA / Traian Vuia (LRTR)**

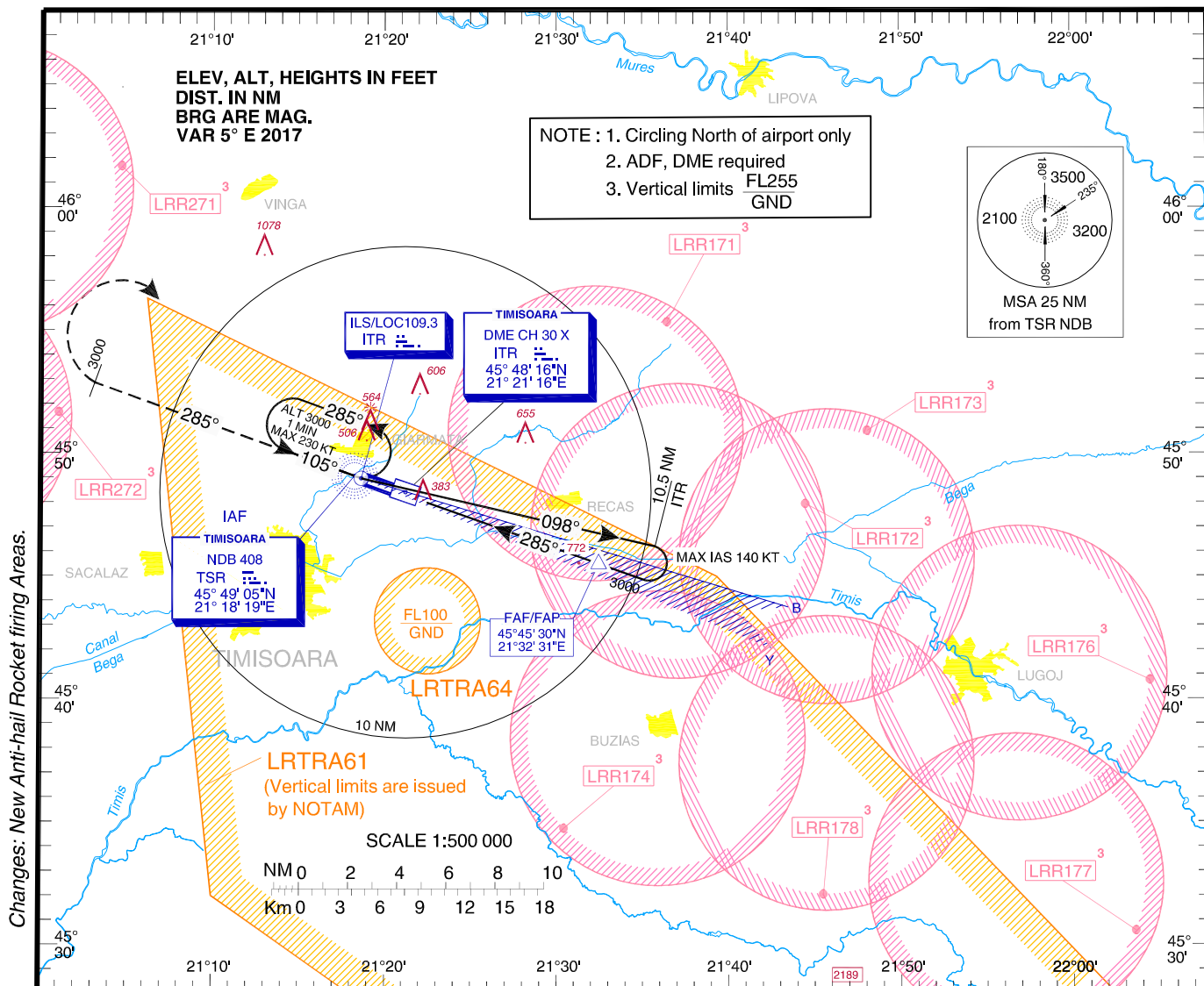
**INSTRUMENT APPROACH**

**CHART - ICAO**

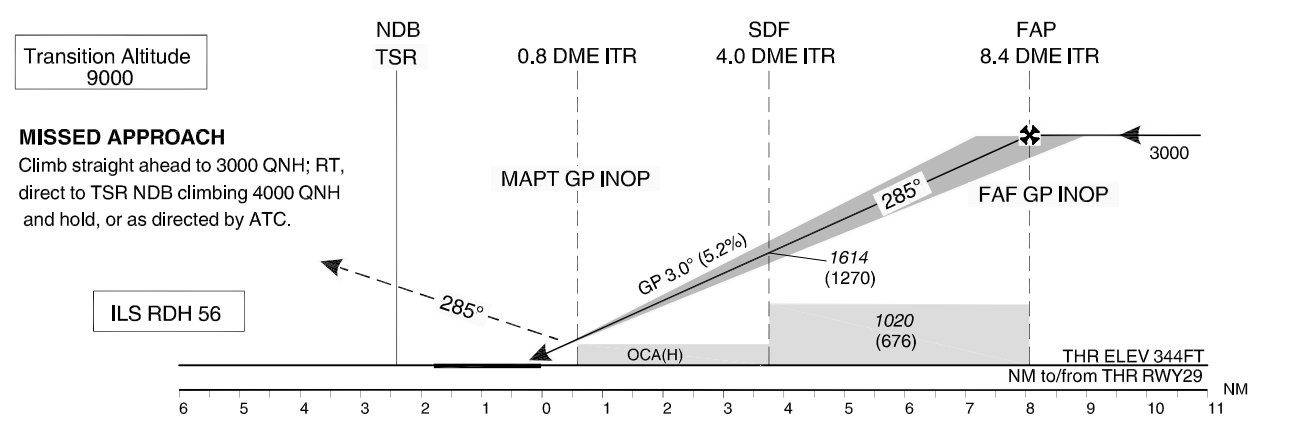
HEIGHTS RELATED TO  
THR RWY 29 - ELEV 344

ARAD APPROACH	123.530
ARAD APPROACH ALTN	126.350
TIMIȘOARA TOWER	120.105
TIMIȘOARA TOWER ALTN	129.450
TIMIȘOARA ATIS	123.125

**ILS**  
**RWY 29**  
**CAT A, B**



Changes: New Anti-hail Rocket firing Areas.



OCA(H)		A	B
Straight-in Approach	ILS CAT I	531 (187)	544 (200)
	ILS CAT II	443 (99)	461 (117)
	ILS GP INOP	630 (286)	
Circling		810	860

GS	fts	70	90	100	120
FAF - MAPT 7.55 NM	min:s	6:28	5:02	4:32	3:46
Rate of descent (5.2%)	ft/min	372	478	531	637

Dist to ITR DME	NM	1.0	2.0	3.0	4.0	5.0	6.0	7.0	8.0
Dist to THR 29	NM	0.8	1.8	2.8	3.8	4.8	5.8	6.8	7.8
Altitude (Height)	FT	659 (315)	977 (633)	1296 (952)	1614 (1270)	1933 (1589)	2251 (1907)	2570 (2226)	2888 (2544)

CAT IIIA approved

Timing not authorised for defining MAPT.

For data tabulation see verso

TIMISOARA / Traian Vuia (LRTR)  
ILS RWY 29, CAT A, B

**AERONAUTICAL DATA TABULATION**

<b>ILS Approach to RWY 29, CAT A, B</b>	
<b>Fix/Point</b>	<b>Coordinates</b>
<b>TSR NDB (IAF)</b>	45°49'04.7"N 021°18'19.5"E
<b>ITR LOC</b>	45°48'59.1"N 021°18'42.0"E
<b>ITR DME</b>	45°48'16.2"N 021°21'15.7"E
<b>10.5 D ITR – BRG 097.57°TSR NDB</b>	45°46'17.9"N 021°35'48.8"E
<b>FAF/FAF - BRG 284.54° / D 8.35 ITR</b>	45°45'30.3"N 021°32'30.8"E
<b>SDF – BRG 284.56° / D 4.00 ITR</b>	45°46'58.7"N 021°26'40.4"E
<b>MAPt – BRG 284.56° / D 0.80 ITR</b>	45°48'03.8"N 021°22'22.0"E
<b>THR RWY 29</b>	45°48'16.24"N 021°21'32.61"E