

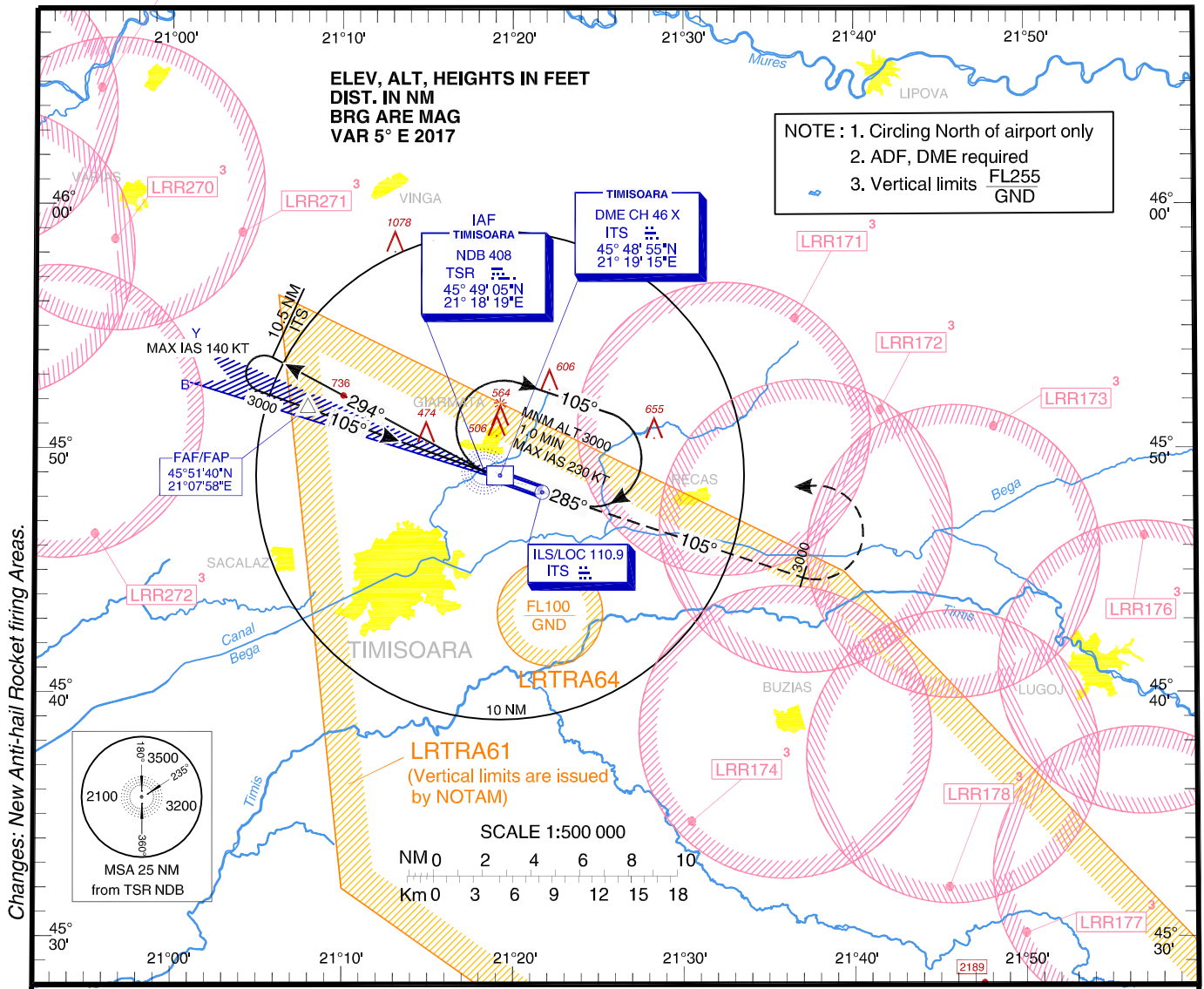
**INSTRUMENT APPROACH  
CHART - ICAO**

**AERODROME ELEV 348 ft**  
HEIGHTS RELATED TO  
THR RWY 11 ELEV 343

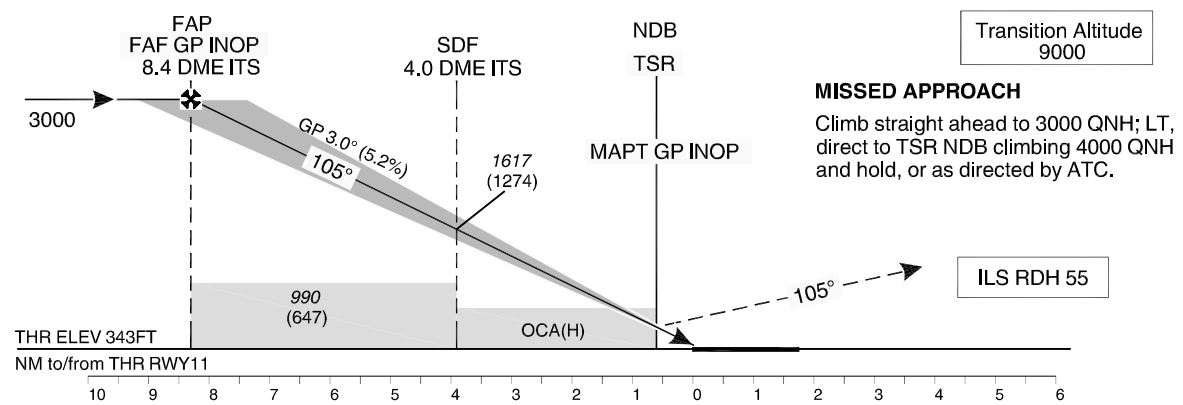
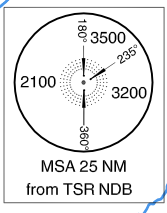
**TIMIȘOARA / Traian Vuia (LRTR)**

ARAD APPROACH	123.530
ARAD APPROACH ALTN	126.350
TIMIȘOARA TOWER	120.105
TIMIȘOARA TOWER ALTN	129.450
TIMIȘOARA ATIS	123.125

**ILS  
RWY 11  
CAT A, B**



Changes: New Anti-hail Rocket firing Areas.



OCA(H)		A	B
Straight-in Approach	ILS CAT I	540 (197)	552 (209)
	ILS CAT II	452 (109)	469 (126)
	ILS GP INOP	720 (377)	
Circling		810	860

GS	kts	70	90	100	120
FAF - MAPT 7.7 NM	min:s	6:35	5:07	4:37	3:51
Rate of descent (5.2%)	ft/min	372	478	531	637

Dist to ITS DME	NM	8.0	7.0	6.0	5.0	4.0	3.0	2.0	1.0
Dist to THR 11		7.8	6.8	5.8	4.8	3.8	2.8	1.8	0.8
Altitude (Height)	FT	2891 (2548)	2572 (2229)	2254 (1911)	1935 (1592)	1617 (1274)	1299 (956)	980 (637)	662 (319)

CAT IIIA approved

Timing not authorized for defining MAPT

For data tabulation see verso

TIMIȘOARA / Traian Vuia (LRTR)  
ILS RWY 11, CAT A, B

## AERONAUTICAL DATA TABULATION

ILS Approach to RWY 11, CAT A, B.	
Fix/Point	Coordinates
TSR NDB (IAF/MAPT GP INOP)	45°49'04.7"N 021°18'19.5"E
ITS LOC	45°48'13.7"N 021°21'42.6"E
ITS DME	45°48'55.0"N 021°19'15.4"E
10.5 D ITS – BRG 293.64° TSR	45°53'49.3"N 021°05'54.9"E
FAF/FAP – BRG 104.60° / D 8.35 ITS	45°51'40.0"N 021°07'58.4"E
SDF – BRG 104.60° / D 4.00 ITS	45°50'12.1"N 021°13'50.4"E
MAPt (TSR NDB)	45°49'04.7"N 021°18'19.5"E
THR RWY 11	45°48'54.57"N 021°19'00.06"E