

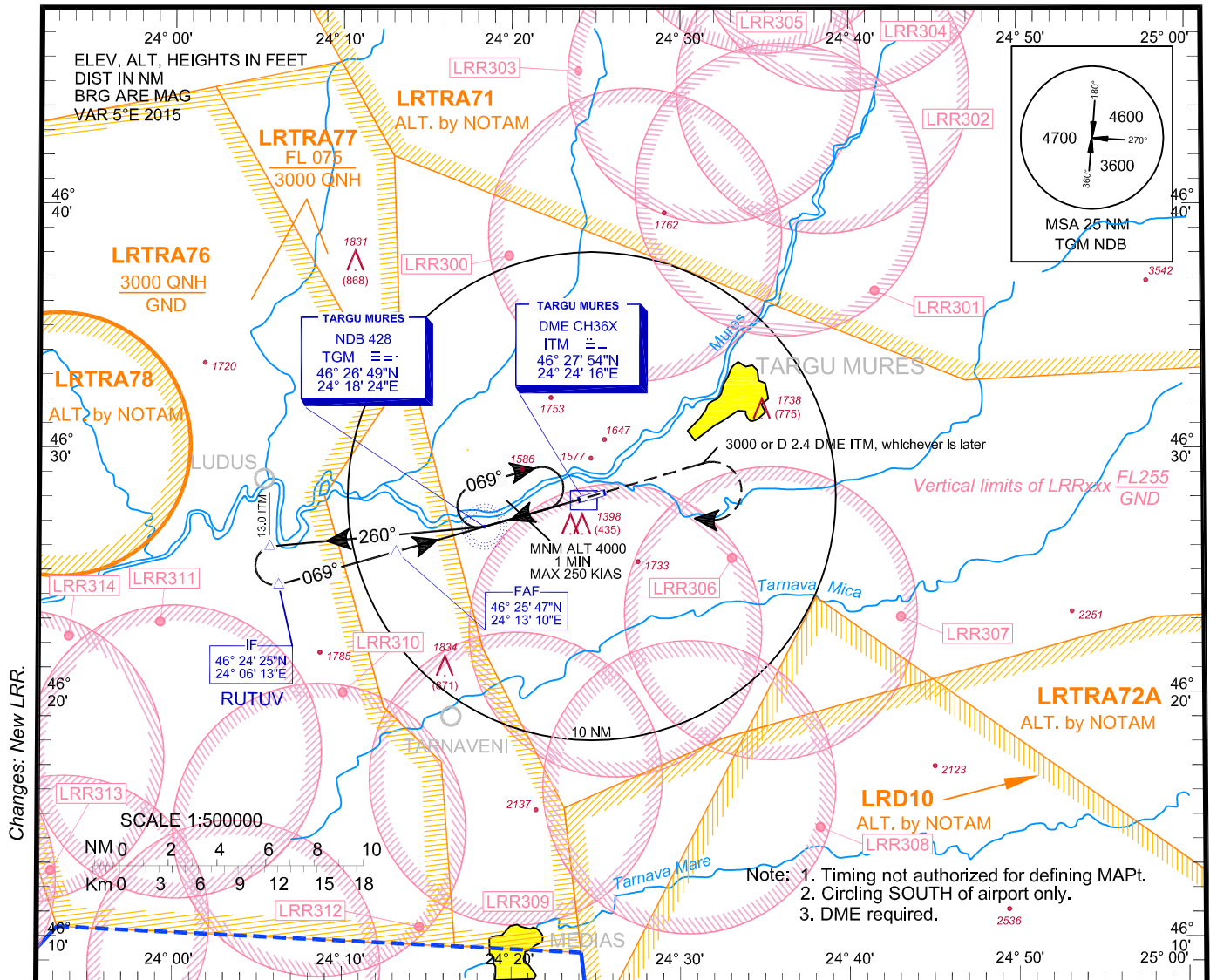
**INSTRUMENT  
APPROACH  
CHART - ICAO**

**AERODROME  
ELEV. 963 ft**  
HEIGHTS RELATED  
TO AD ELEV

|                           |         |
|---------------------------|---------|
| NAPOC APPROACH            | 126.430 |
| NAPOC APPROACH ALTN       | 127.275 |
| NAPOC NORTH APPROACH      | 126.430 |
| NAPOC NORTH APPROACH ALTN | 127.275 |
| NAPOC SOUTH APPROACH      | 119.680 |
| NAPOC SOUTH APPROACH ALTN | 127.275 |

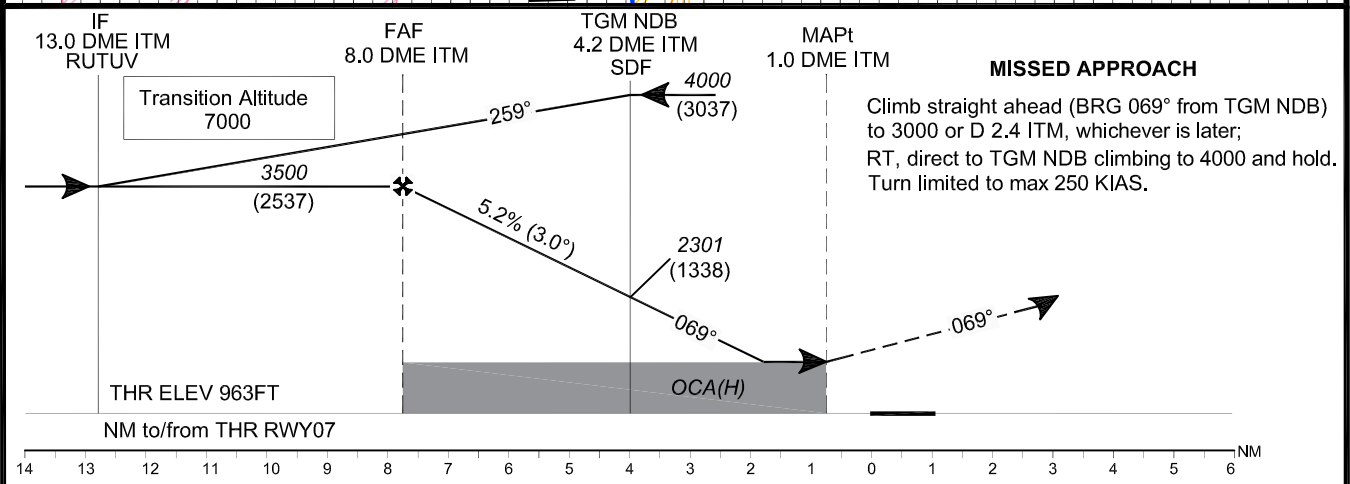
|                        |         |
|------------------------|---------|
| TARGU MURES TOWER      | 119.180 |
| TARGU MURES TOWER ALTN | 120.325 |
| TARGU MURES ATIS       | 125.950 |

**TÂRGU MUREȘ/  
Transilvania-  
Târgu Mureș (LRTM)  
NDB RWY 07 CAT A / B**



Changes: New LRR.

- Note: 1. Timing not authorized for defining MAPt.  
2. Circling SOUTH of airport.  
3. DME required.



|                      |            |      |
|----------------------|------------|------|
| OCA/H                | A          | B    |
| Straight-in approach | 1720 (757) |      |
| Circling             | 1880       | 2040 |

|                 |        |      |      |      |      |
|-----------------|--------|------|------|------|------|
| GS              | kts    | 70   | 90   | 100  | 120  |
| FAF-MAPt 7.0 NM | min:s  | 5:58 | 4:39 | 4:11 | 3:29 |
| Rate of descent | ft/min | 372  | 478  | 531  | 637  |

|                   |    |             |             |             |             |             |            |            |
|-------------------|----|-------------|-------------|-------------|-------------|-------------|------------|------------|
| Dist to DME ITM   | NM | 7           | 6           | 5           | 4.2 TGM     | 4           | 3          | 2          |
| Dist to THR 07    | NM | 6.8         | 5.8         | 4.8         | 4.0         | 3.8         | 2.8        | 1.8        |
| Altitude (Height) | ft | 3190 (2227) | 2871 (1908) | 2553 (1590) | 2301 (1338) | 2234 (1271) | 1916 (953) | 1597 (634) |

For data tabulation see verso.

**TÂRGU MUREŞ / TRANSILVANIA - TÂRGU MUREŞ (LRTM)  
NDB CAT A, B RWY 07**

**AERONAUTICAL DATA TABULATION**

| <b>NDB Approach CAT A, B to RWY 07</b>          |                              |
|---|------------------------------|
| <b>Fix/Point</b>                                | <b>Coordinates</b>           |
| <b>TGM NDB</b> (IAF, SDF)                       | 46°26'48.9"N 024°18'23.7"E   |
| <b>13.0 D ITM</b> – BRG 259.47° TGM outbound    | 46°25'59.1"N 024°05'41.1"E   |
| <b>RUTUV / 13.0 D ITM</b> (IF) – BRG 068.78°TGM | 46°24'24.7"N 024°06'13.1"E   |
| <b>8.0 D ITM</b> (FAF) – BRG 68.89° TGM         | 46°25'47.2"N 024°13'09.9"E   |
| <b>1.0 D ITM</b> (MAPT)                         | 46°27'41.6"N 024°22'51.5"E   |
| <b>THR RWY 07</b>                               | 46°27'55.01"N 024°24'00.25"E |

Final approach descent angle: 3.00°