

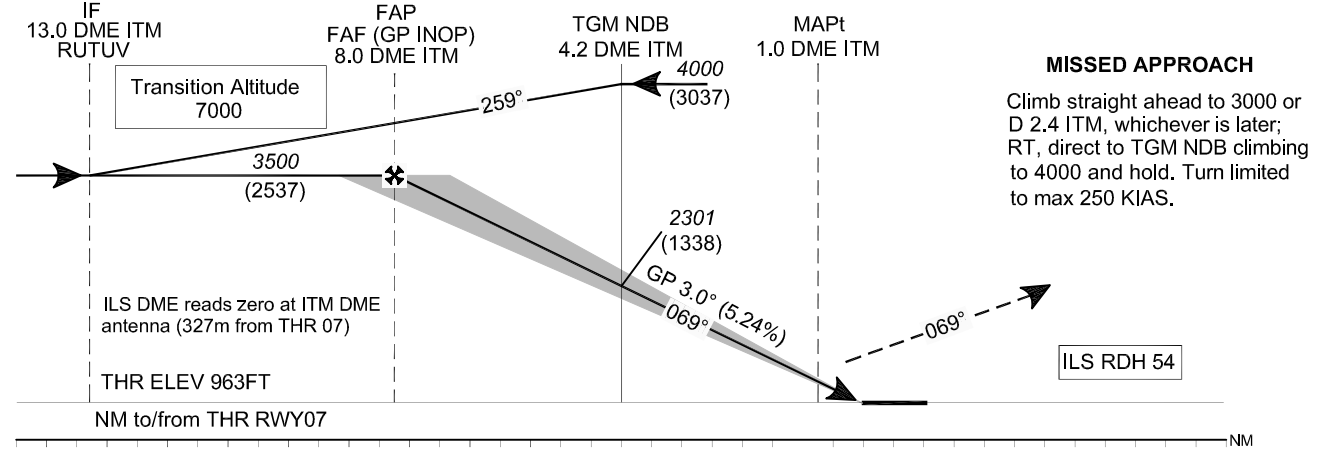
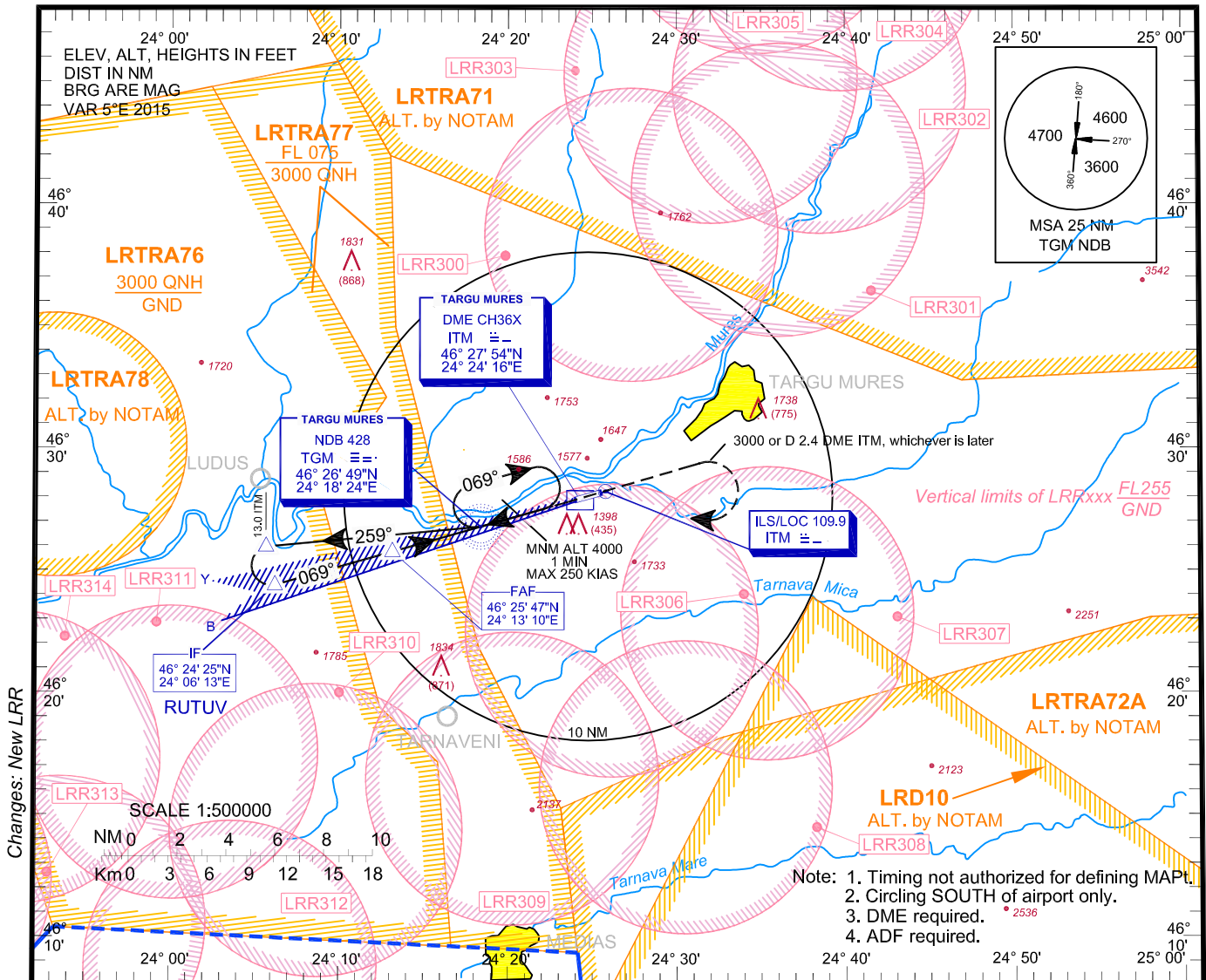
**INSTRUMENT  
APPROACH  
CHART - ICAO**

**AERODROME  
ELEV. 963 ft**  
HEIGHTS RELATED  
TO AD ELEV

NAPOC APPROACH	126.430
NAPOC APPROACH ALTN	127.275
NAPOC NORTH APPROACH	126.430
NAPOC NORTH APPROACH ALTN	127.275
NAPOC SOUTH APPROACH	119.680
NAPOC SOUTH APPROACH ALTN	127.275

TARGU MURES TOWER	119.180
TARGU MURES TOWER ALTN	120.325
TARGU MURES ATIS	125.950

**TÂRGU MUREȘ/  
Transilvania-  
Târgu Mureș (LRTM)  
ILS RWY 07 CAT A / B**



OCA/(H)		A	B
Straight-in Approach	ILS CAT I	1111 (148)	1124 (161)
	ILS CAT II	1015 (52)	1029 (66)
	GP INOP	1500 (537)	
Circling		1730	1900

GS	kts	70	90	100	120
FAF-MAPT 7.0 NM	min:s	5:58	4:39	4:11	3:29
Rate of descent	ft/min	372	478	531	637

Dist to DME ITM	NM	7	6	5	4.2 TGM	4	3	2
Dist to THR 07	NM	6.8	5.8	4.8	4.0	3.8	2.8	1.8
Altitude (Height)	ft	3190 (2227)	2871 (1908)	2553 (1590)	2301 (1338)	2234 (1271)	1916 (953)	1597 (634)

For data tabulation see verso.

**TÂRGU MUREŞ / TRANSILVANIA - TÂRGU MUREŞ (LRTM)  
ILS CAT A, B RWY 07**

**AERONAUTICAL DATA TABULATION**

<b>ILS Approach CAT A, B to RWY 07</b>	
<b>Fix/Point</b>	<b>Coordinates</b>
<b>TGM NDB (IAF)</b>	46°26'48.9"N 024°18'23.7"E
<b>13.0 D ITM – BRG 259.47° TGM outbound</b>	46°25'59.1"N 024°05'41.1"E
<b>RUTUV / 13.0 D ITM (IF) – BRG 68.78° TGM</b>	46°24'24.7"N 024°06'13.1"E
<b>8.0 D ITM (FAF GP INOP) - BRG 68.89° TGM</b>	46°25'47.2"N 024°13'09.9"E
<b>1.0 D ITM (MAPT)</b>	46°27'41.6"N 024°22'51.5"E
<b>THR RWY 07</b>	46°27'55.01"N 024°24'00.25"E
<b>ITM LOC</b>	46°28'15.1"N 024°25'43.3"E