

SUCEAVA/Ştefan cel Mare (LRSV)

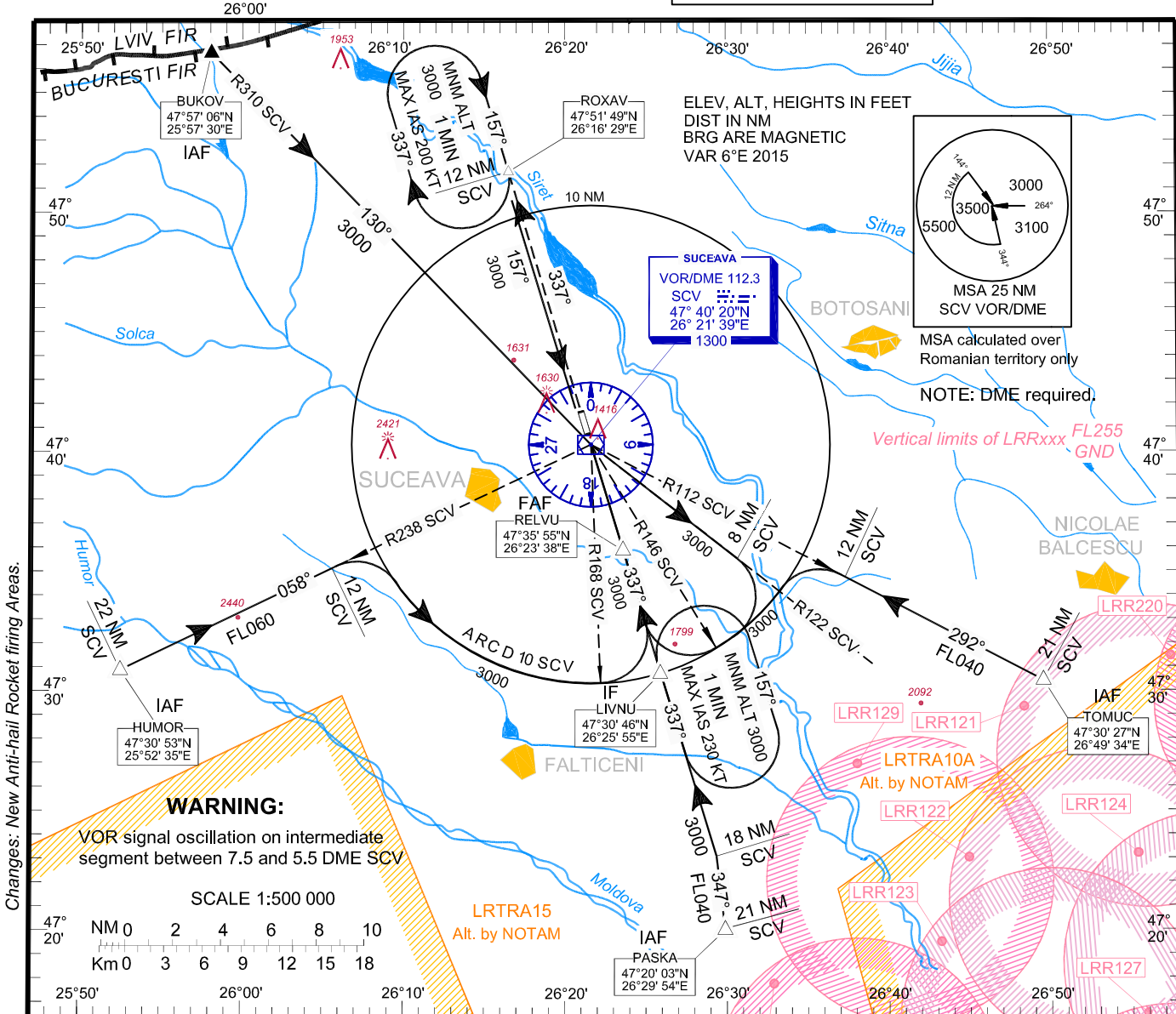
INSTRUMENT APPROACH  
CHART - ICAO

AERODROME ELEV. 1375 ft

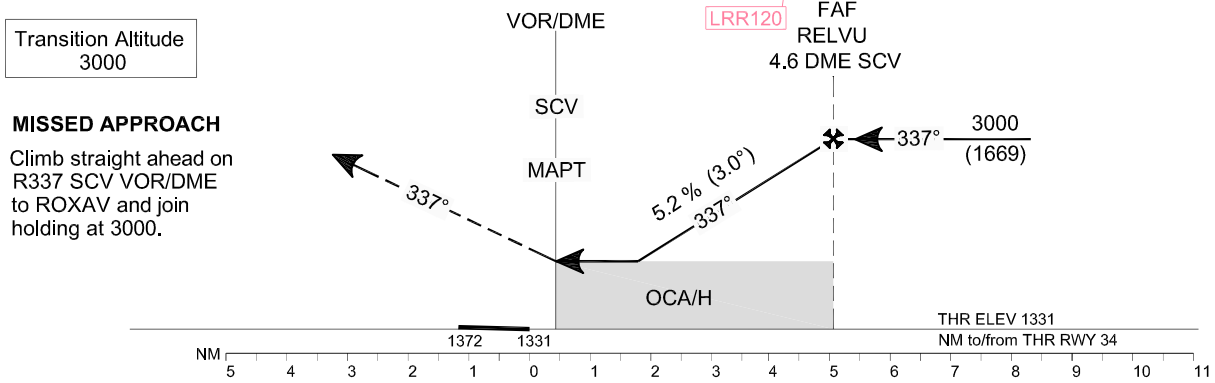
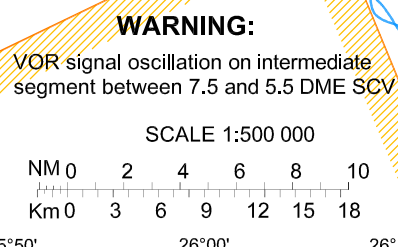
HEIGHTS RELATED TO  
THR RWY 34 - ELEV 1331

SUCEAVA TWR 129.955  
SUCEAVA TWR ALTN 118.300

VOR  
RWY 34



Changes: New Anti-hail Rocket firing Areas.



OCA/H	A	B	C	D
Straight-in Approach		1670 (339)		
Circling	1930		2030	

	70	90	100	120	140	160
FAF-MAPT 4.6 NM	min:s 3:58	3:05	2:46	2:19	1:59	1:44
Rate of descent (5.2%)	ft/min 372	478	531	637	743	849

Timing not authorized for defining MAPT.

Dist. to SCV DME	NM	1.0	2.0	3.0	4.0
Dist. to THR 34	NM	1.5	2.5	3.5	4.5
Altitudes (Heights)	FT	1843 (512)	2161 (830)	2480 (1149)	2798 (1467)

**SUCEAVA / Ștefan cel Mare (LRSV)  
VOR RWY 34**

**AERONAUTICAL DATA TABULATION**

<b>VOR approach to RWY 34 from BUKOV, TOMUK, PASKA, HUMOR</b>	
<b>Fix/Point</b>	<b>Coordinates</b>
<b>BUKOV</b> (IAF) – BRG 305.55°/23.37 NM SCV	47°57'06.0"N 025°57'30.0"E
<b>TOMUC</b> (IAF) – BRG 111.65°/21.34 NM SCV	47°30'26.9"N 026°49'34.3"E
<b>PASKA</b> (IAF) – BRG 158.49°/21.05 NM SCV	47°20'03.3"N 026°29'53.9"E
<b>HUMOR</b> (IAF) – BRG 237.98°/21.83 NM SCV	47°30'53.1"N 025°52'35.2"E
<b>12.0 D SCV</b> – BRG 111.50°/12.00 NM SCV	47°34'47.4"N 026°37'22.6"E
<b>18.0 D SCV</b> – BRG 157.11°/18.00 NM SCV	47°23'07.0"N 026°29'19.3"E
<b>12.0 D SCV</b> – BRG 238.14°/12.00 NM SCV	47°35'09.4"N 026°05'39.0"E
<b>10.0 D SCV</b> – BRG 145.53°/10.00 NM SCV	47°31'32.2"N 026°28'38.9"E
<b>10.0 D SCV</b> – BRG 168.50°/10.00 NM SCV	47°30'23.3"N 026°23'01.6"E
<b>LIVNU</b> (IF) – BRG 157°/10.0 NM SCV	47°30'46.3"N 026°25'55.3"E
<b>RELVU</b> (FAF) - BRG 157°/4.6 NM SCV	47°35'55.2"N 026°23'37.6"E
<b>SCV VOR/DME</b> (MAPT)	46°40'20.4"N 026°21'39.0"E
<b>THR RWY 34</b>	47°40'46.24"N 026°21'27.35"E
<b>ROXAV</b> (MAHF) – BRG 337°/12.0 NM SCV	47°51'48.9"N 026°16'29.0"E
<b>8.0 D SCV</b> - BRG 122.42°/8.00 NM SCV	47°35'21.6"N 026°30'54.2"E

Final approach descent angle: 3.00°