

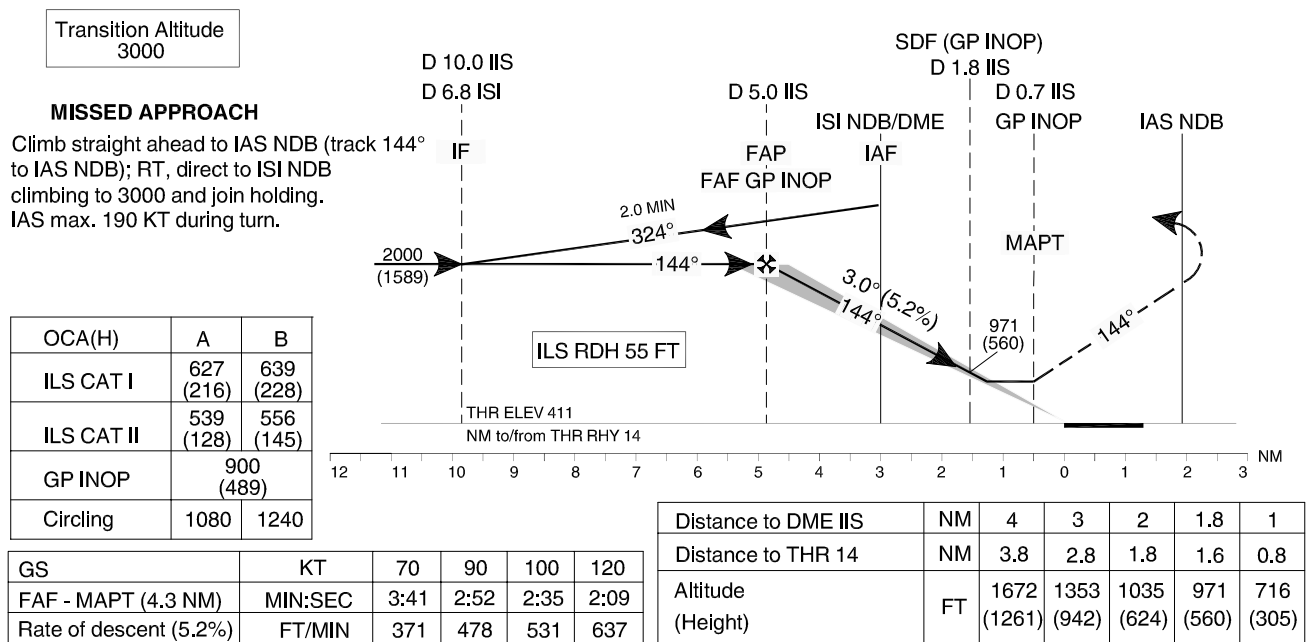
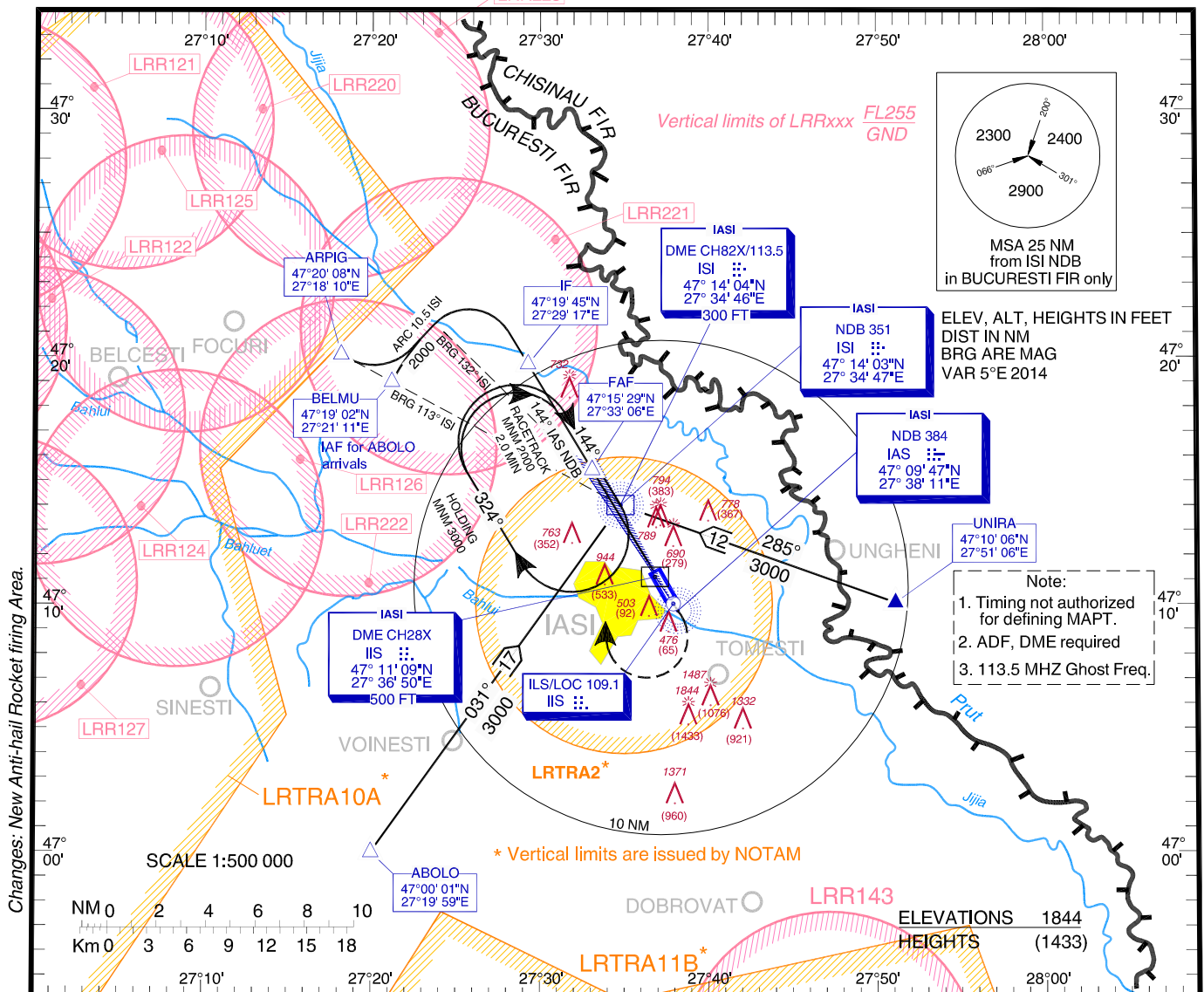
**INSTRUMENT APPROACH
CHART - ICAO**

AERODROME ELEV. 411 FT
HEIGHTS RELATED TO THR ELEV

IASI Tower 119.955
IASI Tower ALTN 119.200

IAȘI / Iași (LRIA)

**ILS
RWY 14
CAT A, B**



IAȘI / Iași (LRIA)
ILS RWY 14, CAT A, B

AERONAUTICAL DATA TABULATION

| ILS approach CAT A, B to RWY 14 from ABOLO, ARPIG, UNIRA | |
|---|------------------------------|
| Fix/Point | Coordinates |
| ABOLO – BRG 30.74° // 17.30NM ISI NDB | 47°00'01.1"N 027°19'58.7"E |
| ARPIG (IAF) – BRG 113.24°/12.8NM ISI NDB | 47°20'08.1"N 027°18'10.0"E |
| UNIRA – BRG 284.76° / 11.81NM ISI NDB | 47°10'06.0"N 027°51'06.0"E |
| BELMU (IAF) – BRG 113.24° ISI NDB / 10.5NM ISI DME | 47°19'02.0"N 027°21'11.0"E |
| ISI NDB (IAF) | 47°14'03.4"N 027°34'46.9"E |
| 10.0 D IIS / 6.8 D ISI (IF) | 47°19'45.3"N 027°29'16.8"E |
| 5.0 D IIS (FAF/FAP) | 47°15'28.9"N 027°33'05.8"E |
| 1.8 D IIS (SDF) | 47°12'43.4"N 027°35'33.4"E |
| 0.7 D IIS (MAPt) | 47°11'46.9"N 027°36'23.7"E |
| THR RWY 14 | 47°11'22.09"N 027°36'45.73"E |
| IIS LOC | 47°10'06.6"N 027°37'52.8"E |
| IAS NDB (MATF) | 47°09'46.6"N 027°38'10.6"E |