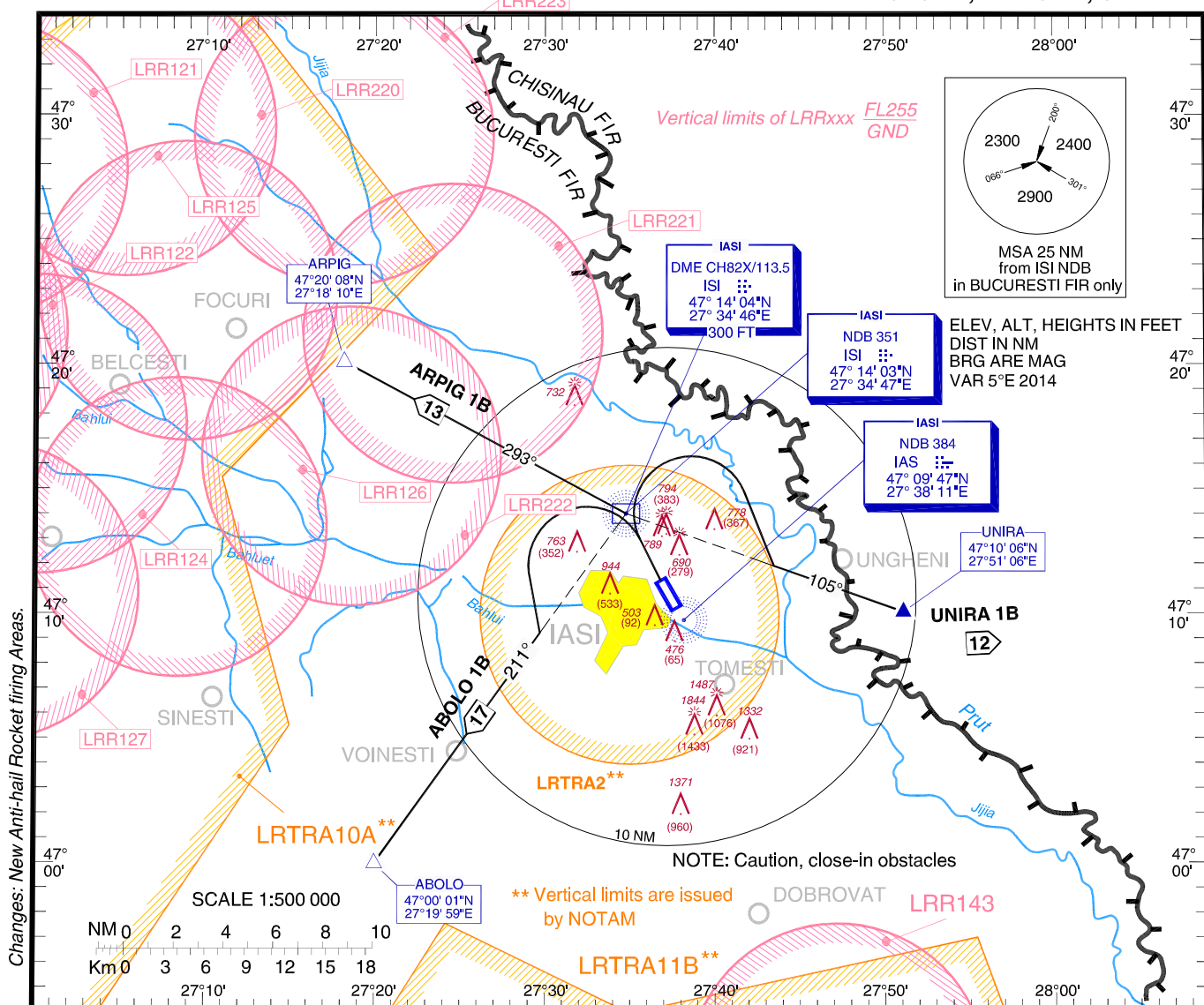


**STANDARD DEPARTURE CHART  
INSTRUMENT (SID) - ICAO**

Transition Altitude	3000
IASI Tower	119.955
IASI Tower ALTN	119.200
Bacau SECTOR	128.610
Bacau SECTOR ALTN	125.725

IAȘI / Iași (LRIA)

**RWY 32  
ABOLO 1B, ARPIG 1B, UNIRA 1B**



SID Identifier	Description
ABOLO 1B	On track 329° (inbound ISI NDB) climb to 1100; LT, intercept track 211° from ISI NDB to ABOLO. Departure turn limited to max 210 KIAS. Increased PDG* 4.0% until ABOLO due to airspace structure.
ARPIG 1B	On track to 329° to ISI NDB; LT, on track 293° from ISI NDB to ARPIG. Increased PDG* 3.8% until ARPIG due to airspace structure.
UNIRA 1B	On track 329° (inbound ISI NDB) climb to 1100; RT, intercept track 105° from ISI NDB to UNIRA. Departure turn limited to max 210 KIAS. Increased PDG* 6.4% until UNIRA due to airspace structure.

\* If unable to comply, contact ATC before departure.