

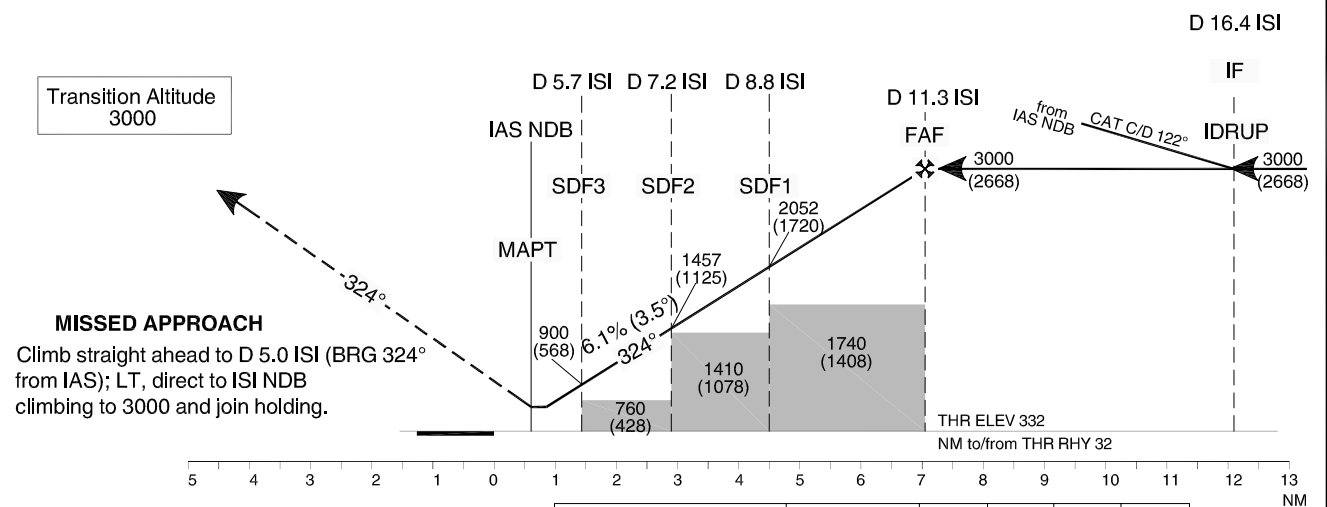
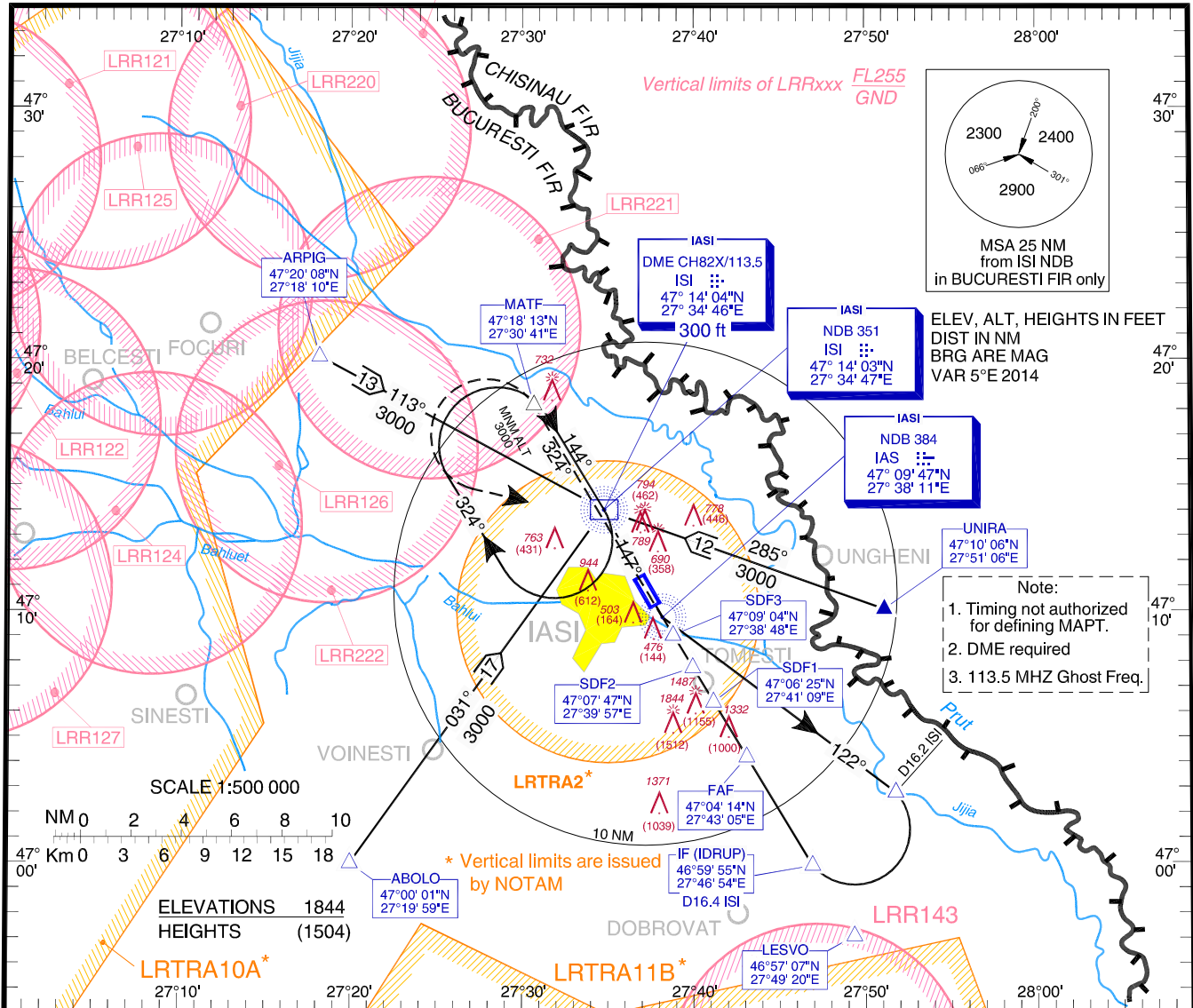
**INSTRUMENT APPROACH  
CHART - ICAO**

**AERODROME ELEV. 411 FT**  
HEIGHTS RELATED TO THR ELEV 332 FT

IASI Tower 119.955  
IASI Tower ALTN 119.200

**IASI / Iași (LRIA)**  
**NDB**  
**RWY 32**  
**CAT C, D**

Changes: New Anti-hail Rocket firing Areas.



GS	KT	100	120	140	160
FAF - MAPT (6.5 NM)	MIN:SEC	3:53	3:14	2:46	2:26
Rate of descent (6.1%)	FT/MIN	619	743	866	990

OCA/H	C	D	Distance to DME ISI	NM	5	5.7	6	7	7.2	8	8.8	9	10	11
Straight-in Approach	690 (358)		Distance to THR 32	NM	0.7	1.4	1.7	2.7	2.9	3.7	4.5	4.7	5.7	6.7
			Altitude	FT	640	900	1012	1384	1458	1756	2052	2128	2499	2871
Circling	1670	2240	Height	FT	308	568	680	1052	1126	1424	1720	1796	2167	2539

For data tabulation see verso.

IASI / Iași (LRJA)  
NDB RWY 32, CAT C, D

AERONAUTICAL DATA TABULATION

NDB approach CAT C, D to RWY 32 from ABOLO, ARPIG, UNIRA	
Fix/Point	Coordinates
<b>LESVO</b>	46°57'07.1"N 027°49'19.8"E
<b>ABOLO</b> (IAF) – BRG 30.74° ISI NDB	47°00'01.1"N 027°19'58.7"E
<b>ARPIG</b> (IAF) – BRG 113.24° ISI NDB	47°20'08.1"N 027°18'10.0"E
<b>UNIRA</b> – BRG 284.76° ISI NDB	47°10'06.0"N 027°51'06.0"E
<b>ISI NDB</b> (IAF)	47°14'03.4"N 027°34'46.8"E
<b>IAS NDB</b> (MAPT) - BRG 146.65° ISI NDB	47°09'46.6"N 027°38'10.6"E
<b>16.2 D ISI</b> - Outbound 121.90° IAS NDB	47°02'48.6"N 027°51'45.1"E
<b>IDRUP</b> (IF) 16.4 D ISI - Inbound 324° IAS NDB	46°59'55.0"N 027°46'54.3"E
<b>11.3 D ISI</b> (FAF)	47°04'14.3"N 027°43'05.3"E
<b>8.8 D ISI</b> (SDF1)	47°06'25.1"N 027°41'09.4"E
<b>7.2 D ISI</b> (SDF2)	47°07'47.3"N 027°39'56.5"E
<b>5.7 D ISI</b> (SDF3)	47°09'04.3"N 027°38'48.2"E
<b>THR RWY 32</b>	47°10'15.64"N 027°37'44.81"E
<b>5.0 D ISI</b> (MATF) – Outbound 323.90° IAS NDB	47°18'12.6"N 027°30'40.6"E

Final approach descent angle: 3.50°