

**INSTRUMENT APPROACH
CHART - ICAO**

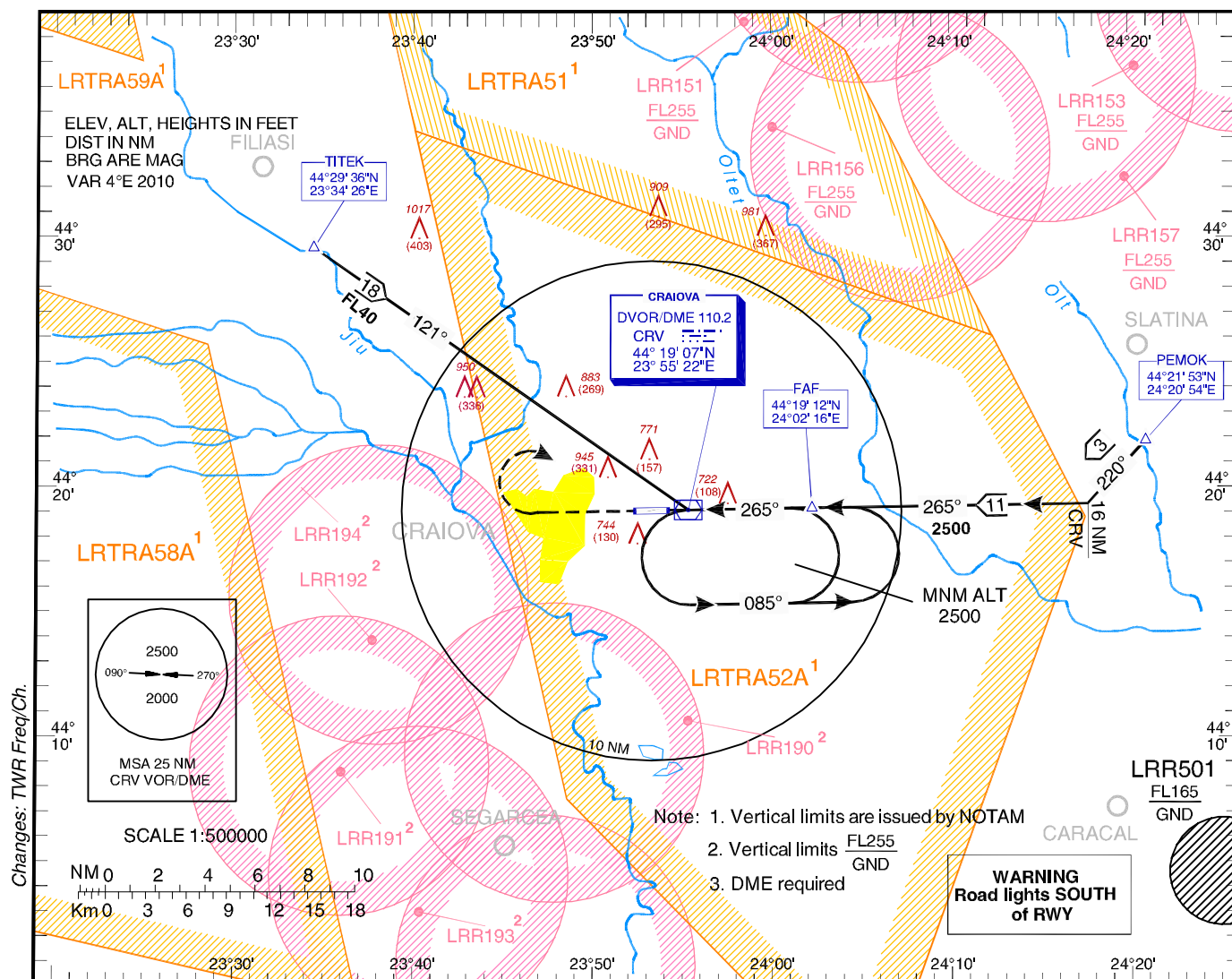
AERODROME ELEV. 626 ft

HEIGHTS RELATED TO
THR RWY 27 - ELEV 614 ft

CRAIOVA / Craiova (LRCV)

CRAIOVA TOWER 129.530
CRAIOVA TOWER ALTN 124.300

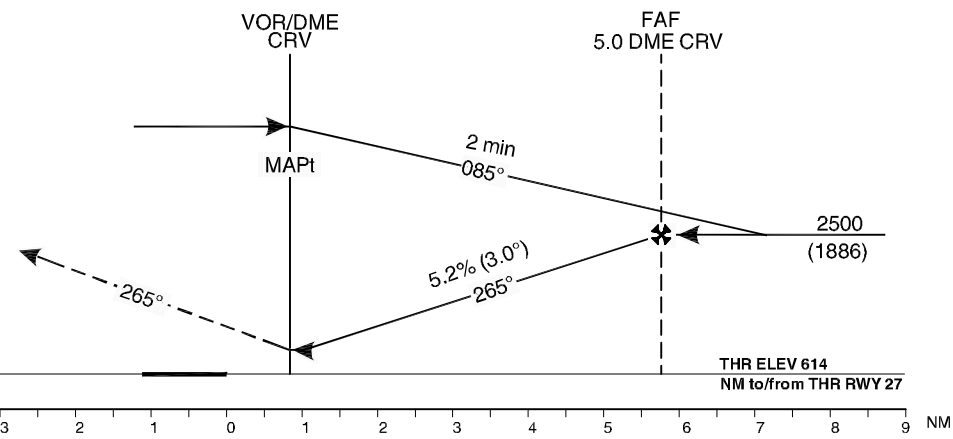
**VOR
RWY 27
CAT C / D**



Transition Altitude
3000

MISSED APPROACH

Climb straight ahead to 2000 QNH, turn RIGHT to CRV VOR/DME climbing to 2500 QNH and hold.



OCA (H)	C	D
Straight-in Approach	970 (356)	
Circling	1340	

GS	fts	100	120	140	160
FAF-MAPT 5.0 NM	min:s	3:00	2:30	2:09	1:53
Rate of descent	ft/min	531	637	743	849

Dist to CRV DME	NM	1.0	2.0	3.0	4.0
Altitudes (Heights)	ft	1239 (625)	1558 (944)	1876 (1262)	2195 (1581)

For data tabulation see verso

**CRAIOVA / Craiova (LRCV)
VOR RWY 27 CAT C / D**

AERONAUTICAL DATA TABULATION

VOR Approach to RWY 27 from PEMOK, TITEK	
Fix/Point	Coordinates
PEMOK (IAF) – BRG 257.57 / 18.54NM CRV	44°21'52.9"N 024°20'54.5"E
TITEK (IAF) – BRG 120.81 / 18.30NM CRV	44°29'35.8"N 023°34'25.9"E
16 NM CRV – BRG 265.20 / 16.00NM CRV	44°19'22.5"N 024°17'39.0"E
FAF – BRG 265.04 / 4.96NM CRV	44°19'12.1"N 024°02'16.3"E
CRV DVOR/DME (MAPT)	44°19'07.0"N 023°55'21.9"E
THR 27	44°19'06.07"N 023°54'14.85"E

Final approach descent angle: 3.00°