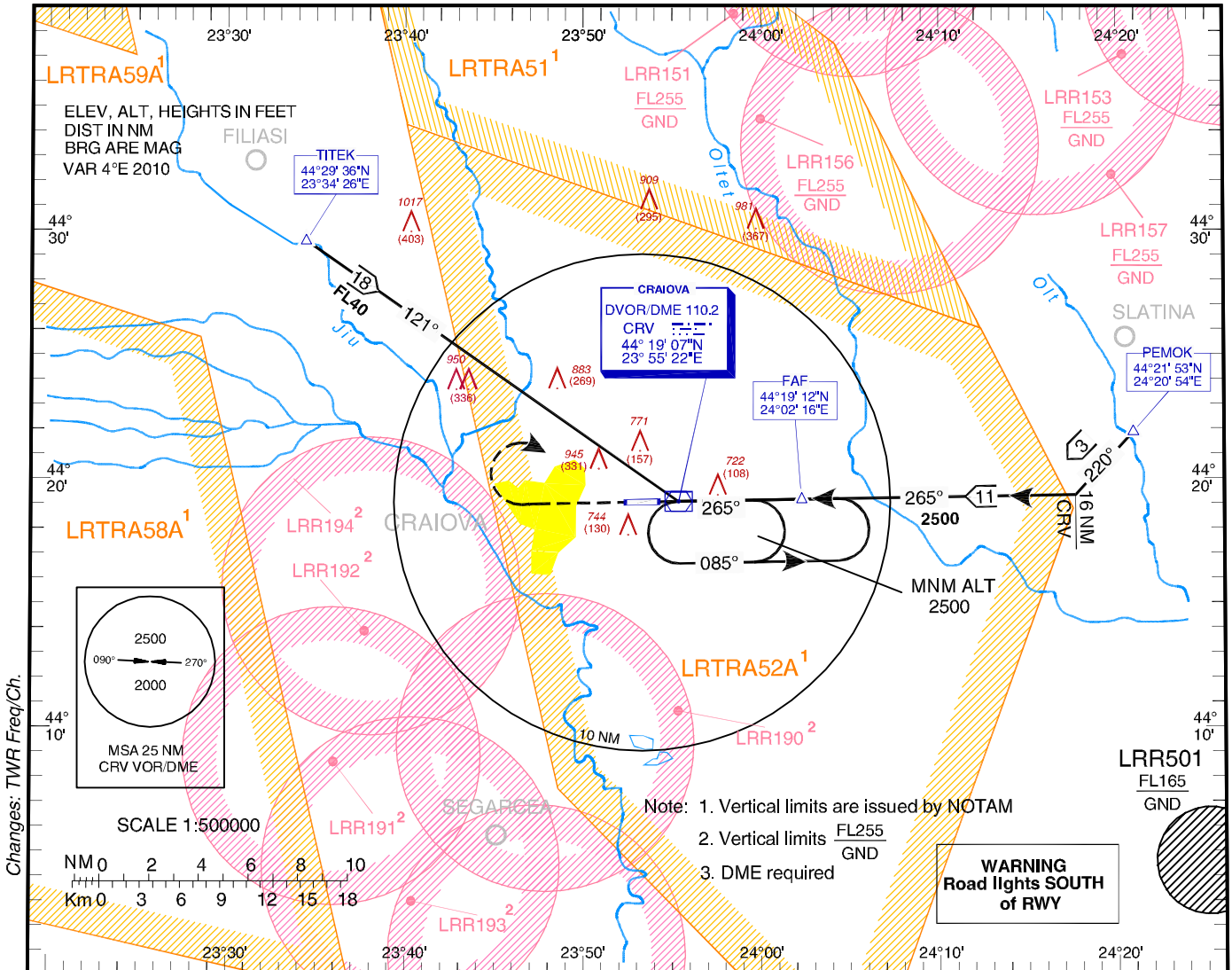


**INSTRUMENT APPROACH  
CHART - ICAO**

**AERODROME ELEV. 626 ft**  
HEIGHTS RELATED TO  
THR RWY 27 - ELEV 614 ft

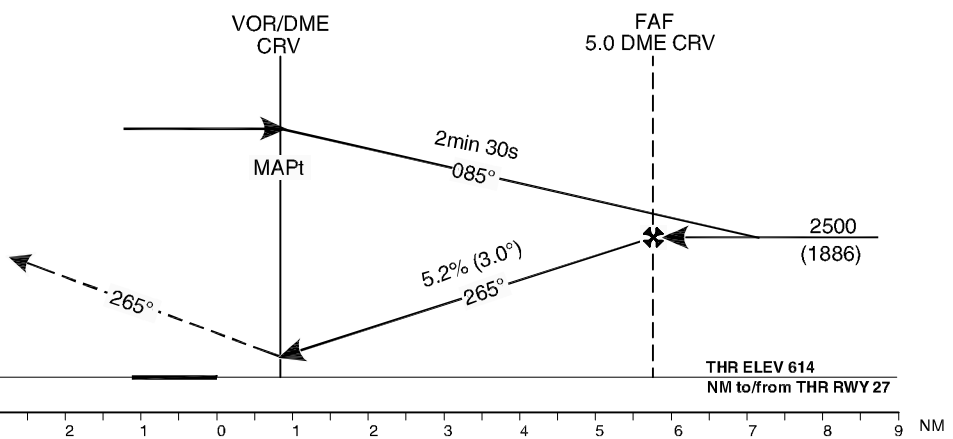
**CRAIOVA / Craiova (LRCV)**  
**VOR**  
**RWY 27**  
**CAT A / B**

CRAIOVA TOWER 129.530  
CRAIOVA TOWER ALTN 124.300



**Transition Altitude  
3000**

**MISSED APPROACH**  
Climb straight ahead to 2000 QNH, turn RIGHT to CRV VOR/DME climbing to 2500 QNH and hold.



OCA (H)	A	B
Straight-in Approach	970 (356)	
Circling	1050	1070

GS	kts	70	90	100	120
FAF-MAPT 5.0 NM	min:s	4:17	3:20	3:00	2:30
Rate of descent	ft/min	372	478	531	637

Dist to CRV DME	NM	1.0	2.0	3.0	4.0
Altitudes (Heights)	ft	1239 (625)	1558 (944)	1876 (1262)	2195 (1581)

For data tabulation see verso

**CRAIOVA / Craiova (LRCV)  
VOR RWY 27, CAT A / B**

**AERONAUTICAL DATA TABULATION**

<b>VOR Approach to RWY 27 from PEMOK, TITEK</b>	
<b>Fix/Point</b>	<b>Coordinates</b>
<b>PEMOK (IAF) – BRG 257.57 / 18.54NM CRV</b>	44°21'52.9"N 024°20'54.5"E
<b>TITEK (IAF) – BRG 120.81 / 18.30NM CRV</b>	44°29'35.8"N 023°34'25.9"E
<b>16 NM CRV – BRG 265.20 / 16.00NM CRV</b>	44°19'22.5"N 024°17'39.0"E
<b>FAF – BRG 265.04 / 4.96NM CRV</b>	44°19'12.1"N 024°02'16.3"E
<b>CRV DVOR/DME (MAPT)</b>	44°19'07.0"N 023°55'21.9"E
<b>THR 27</b>	44°19'06.07"N 023°54'14.85"E

Final approach descent angle: 3.00°