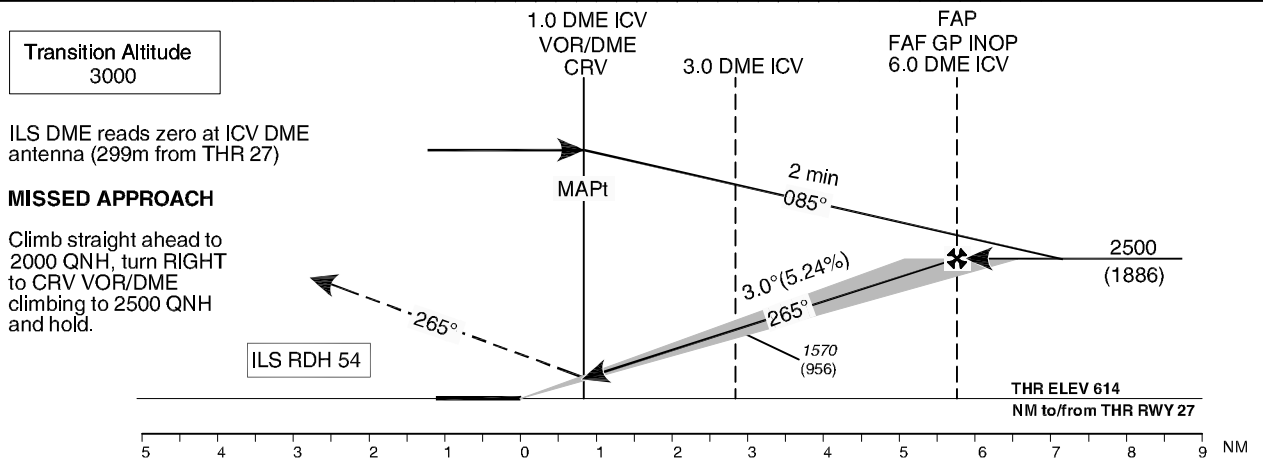
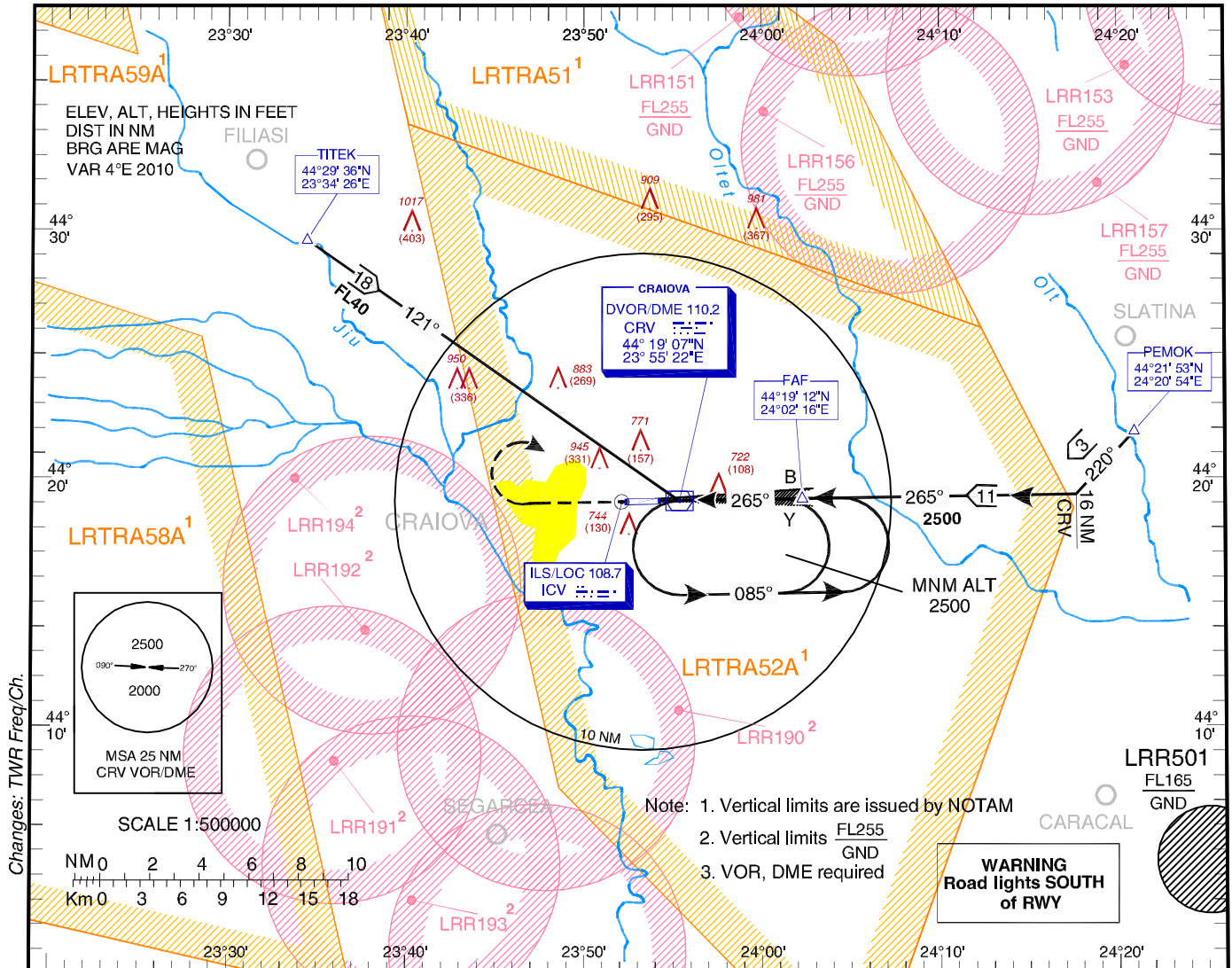


INSTRUMENT APPROACH
CHART - ICAO

AERODROME ELEV. 626 ft
HEIGHTS RELATED TO
THR RWY 27 - ELEV 614 ft

CRAIOVA / Craiova (LRCV)
ILS
RWY 27
CAT C / D

CRAIOVA TOWER 129.530
CRAIOVA TOWER ALTN 124.300



OCA (H)		C	D
Straight-in Approach	CAT I	784 (170)	797 (183)
	GP INOP	970 (356)	
Circling		1340	

GS	kts	100	120	140	160
FAF-MAPT 5.0 NM	min:s	3:00	2:30	2:09	1:53
Rate of descent	ft/min	531	637	743	849

Dist to ICV DME	NM	1.0	2.0	3.0	4.0
Altitudes (Heights)	ft	932 (318)	1251 (637)	1569 (955)	1888 (1274)

For data tabulation see verso

CRAIOVA / Craiova (LRCV)
ILS RWY 27 CAT C / D

AERONAUTICAL DATA TABULATION

ILS Approach to RWY 27 from PEMOK, TITEK	
Fix/Point	Coordinates
PEMOK (IAF) – BRG 257.57 / 18.54NM CRV	44°21'52.9"N 024°20'54.5"E
TITEK (IAF) – BRG 120.81/ 18.30NM CRV	44°29'35.8"N 023°34'25.9"E
16 NM CRV – BRG 265.20 / 16.00NM CRV	44°19'22.5"N 024°17'39.0"E
6.0 D ICV DME (FAF)	44°19'12.1"N 024°02'16.3"E
CRV DVOR/DME	44°19'07.0"N 023°55'21.9"E
1.0 D ICV DME (MAPT GP INOP)	44°19'07.0"N 023°55'24.9"E
THR 27	44°19'06.07"N 023°54'14.85"E
ICV LOC	44°19'04.4"N 023°52'07.9"E