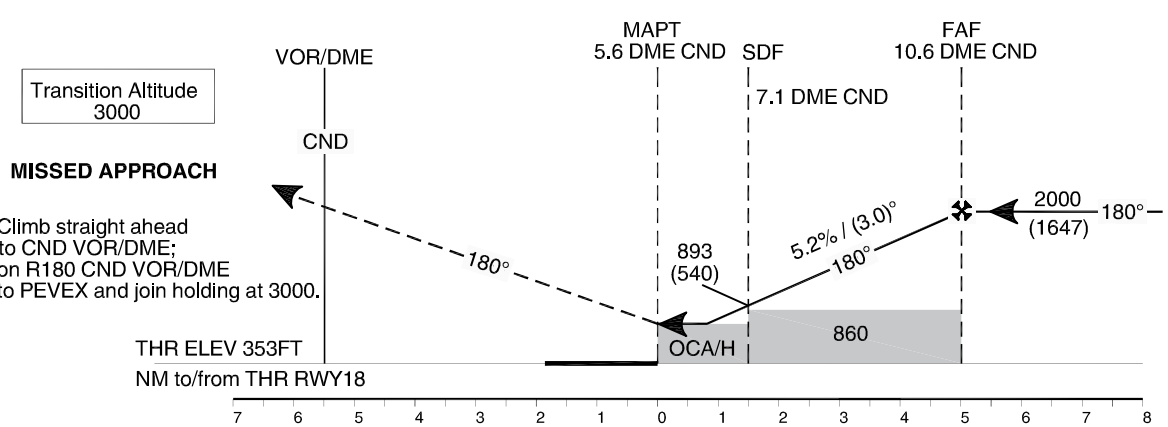
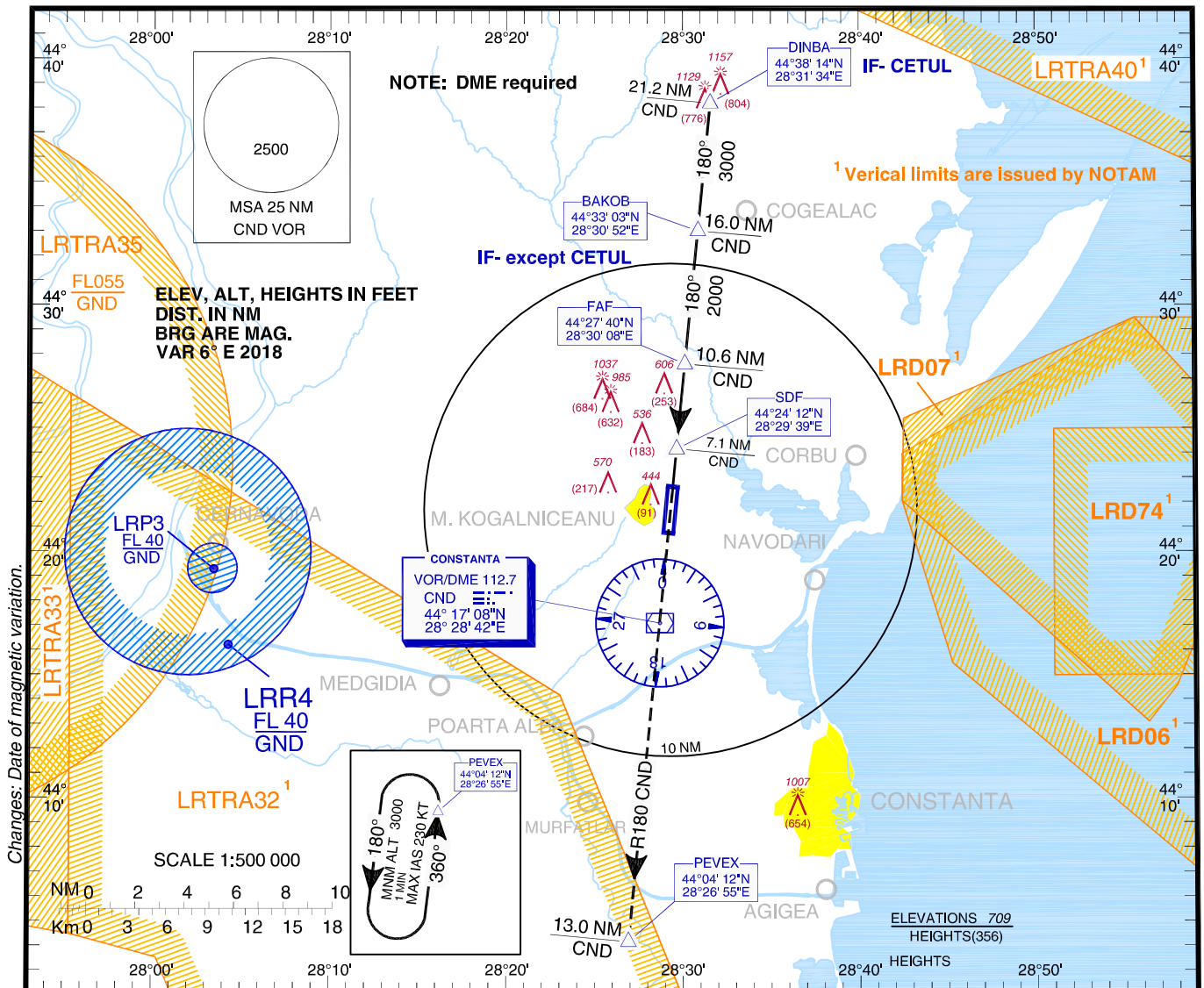


**INSTRUMENT** AERODROME ELEV. 353 ft  
**APPROACH** HEIGHTS RELATED TO AD ELEV  
**CHART - ICAO**

Constanta ATIS 118.750  
Constanta Approach 122.905  
Constanta Tower 124.030

**CONSTANȚA/M.Kogălniceanu-Constanța (LRCK)**  
Constanta Approach ALTN 127.350  
Constanta Tower ALTN 120.450  
**VOR**  
**RWY 18**



|                      |           |     |      |      |
|----------------------|-----------|-----|------|------|
| OCA/H                | A         | B   | C    | D    |
| Straight-in Approach | 680 (327) |     |      |      |
| Circling             | 740       | 870 | 1380 | 1440 |

|                       |         |      |      |      |      |      |      |
|-----------------------|---------|------|------|------|------|------|------|
| GS                    | kts     | 70   | 90   | 100  | 120  | 140  | 160  |
| FAF-MAPT 4.97 NM      | min:sec | 4:16 | 3:19 | 2:59 | 2:29 | 2:08 | 1:52 |
| Rate of descent 5.24% | FT/min  | 372  | 478  | 531  | 637  | 743  | 849  |

|                   |    |           |           |            |             |             |
|-------------------|----|-----------|-----------|------------|-------------|-------------|
| Dist to CND DME   | NM | 7.0       | 7.1       | 8.0        | 9.0         | 10.0        |
| Dist to MAPT      | NM | 1.4       | 1.5       | 2.4        | 3.4         | 4.4         |
| Altitude (Height) | FT | 862 (509) | 893 (540) | 1180 (827) | 1498 (1145) | 1817 (1464) |

Timing not authorized for defining MAPt. For data tabulation see verso

**CONSTANȚA / Mihail Kogălniceanu - Constanța (LRCK)  
VOR RWY 18**

**AERONAUTICAL DATA TABULATION**

| <b>VOR approach to RWY 18 from DINBA</b>                   |                              |
|--|------------------------------|
| <b>Fix/Point</b>   | <b>Coordinates</b>           |
| <b>DINBA</b> (IF-CETUL) – BRG 359.89° / 21.20NM CND        | 44°38'14.0"N 028°31'33.9"E   |
| <b>BAKOB</b> (IF-except CETUL) – BRG 359.88° / 16.00NM CND | 44°33'03.4"N 028°30'51.5"E   |
| <b>10.6 D CND</b> (FAF) – BRG 359.86° / 10.57NM CND        | 44°27'39.5"N 028°30'07.5"E   |
| <b>7.1 D CND</b> (SDF) - BRG 359.86° / 7.10NM CND          | 44°24'12.0"N 028°29'39.3"E   |
| <b>5.6 D CND</b> (MAPt) - BRG 359.86° / 5.6NM CND          | 44°22'42.4"N 028°29'27.2"E   |
| <b>THR RWY 18</b>  | 44°22'40.04"N 028°29'26.13"E |
| <b>CND VOR/DME</b>   | 44°17'08.0"N 028°28'42.0"E   |
| <b>PEVEX</b> (MAHF) – BRG 179.99° / 13.00NM CND            | 44°04'11.8"N 028°26'54.8"E   |

Final approach descent angle: 3.00°