

STANDARD DEPARTURE CHART  
INSTRUMENT (SID) - ICAO

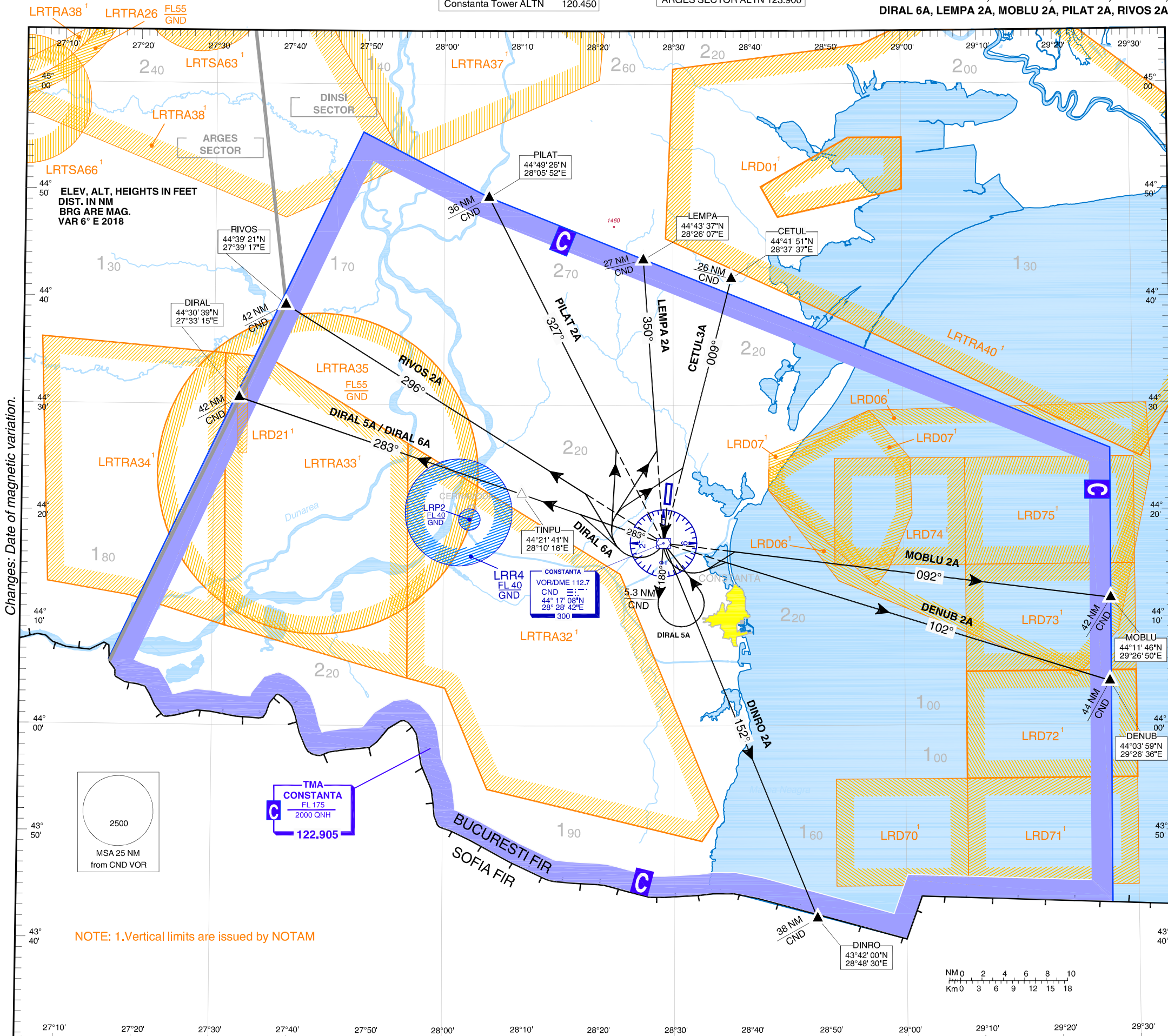
TRANSITION ALTITUDE  
3000 ft

Constanta ATIS 118.750  
Constanta Approach 122.905  
Constanta Approach ALTN 127.350  
Constanta Tower 124.030  
Constanta Tower ALTN 120.450

DINSI SECTOR 122.380  
DINSI SECTOR ALTN 122.725  
ARGES SECTOR 121.180  
ARGES SECTOR ALTN 123.900

CONSTANȚA/M.Kogălniceanu-Constanța (LRCK)

RWY 18  
CETUL 3A, DENUB 2A, DINRO 2A, DIRAL 5A,  
DIRAL 6A, LEMPA 2A, MOBLU 2A, PILAT 2A, RIVOS 2A



SID	Description
CETUL3A	On R180 to CND VOR/DME; RT, on R009 CND VOR/DME to CETUL. Cross CETUL at or above FL060. Initial departure turn limited to max. IAS 220 KT.
DENUB 2A	On R180 to CND VOR/DME; LT, on R102 CND VOR/DME to DENUB. Cross DENUB at or above FL100. Initial departure turn limited to max. IAS 220 KT.
DINRO 2A	On R180 to CND VOR/DME; LT, on R152 CND VOR/DME to DINRO. Cross DINRO at or above FL100. PDG min.3.9% due to airspace structure.
DIRAL 5A	On runway track until D 5.3 CND VOR/DME; LT, direct to CND VOR/DME, on R283 CND VOR/DME to DIRAL. Cross TINPU at or above FL060. Initial departure turn limited to max. IAS 230 KT.
DIRAL 6A	On R180 to CND VOR/DME; RT, on R283 CND VOR/DME to DIRAL. Cross TINPU at or above FL060. Initial departure turn limited to max. IAS 220 KT. PDG min.4.7% until TINPU due to airspace structure.
LEMPA 2A	On R180 to CND VOR/DME; RT, on R350 CND VOR/DME to LEMPA. Cross LEMPA at or above FL110. Initial departure turn limited to max. IAS 220 KT. PDG min.4.8% due to airspace structure.
MOBLU 2A	On R180 to CND VOR/DME; LT, on R092 CND VOR/DME to MOBLU. Cross MOBLU at or above FL120. Initial departure turn limited to max. IAS 220 KT. PDG min.4.1% due to airspace structure.
PILAT 2A	On R180 to CND VOR/DME; RT, on R327 CND VOR/DME to PILAT. Cross PILAT at or above FL070. Initial departure turn limited to max. IAS 220 KT.
RIVOS 2A	On R180 to CND VOR/DME; RT, on R296 CND VOR/DME to RIVOS. Cross RIVOS at or above FL060. Initial departure turn limited to max. IAS 220 KT.