

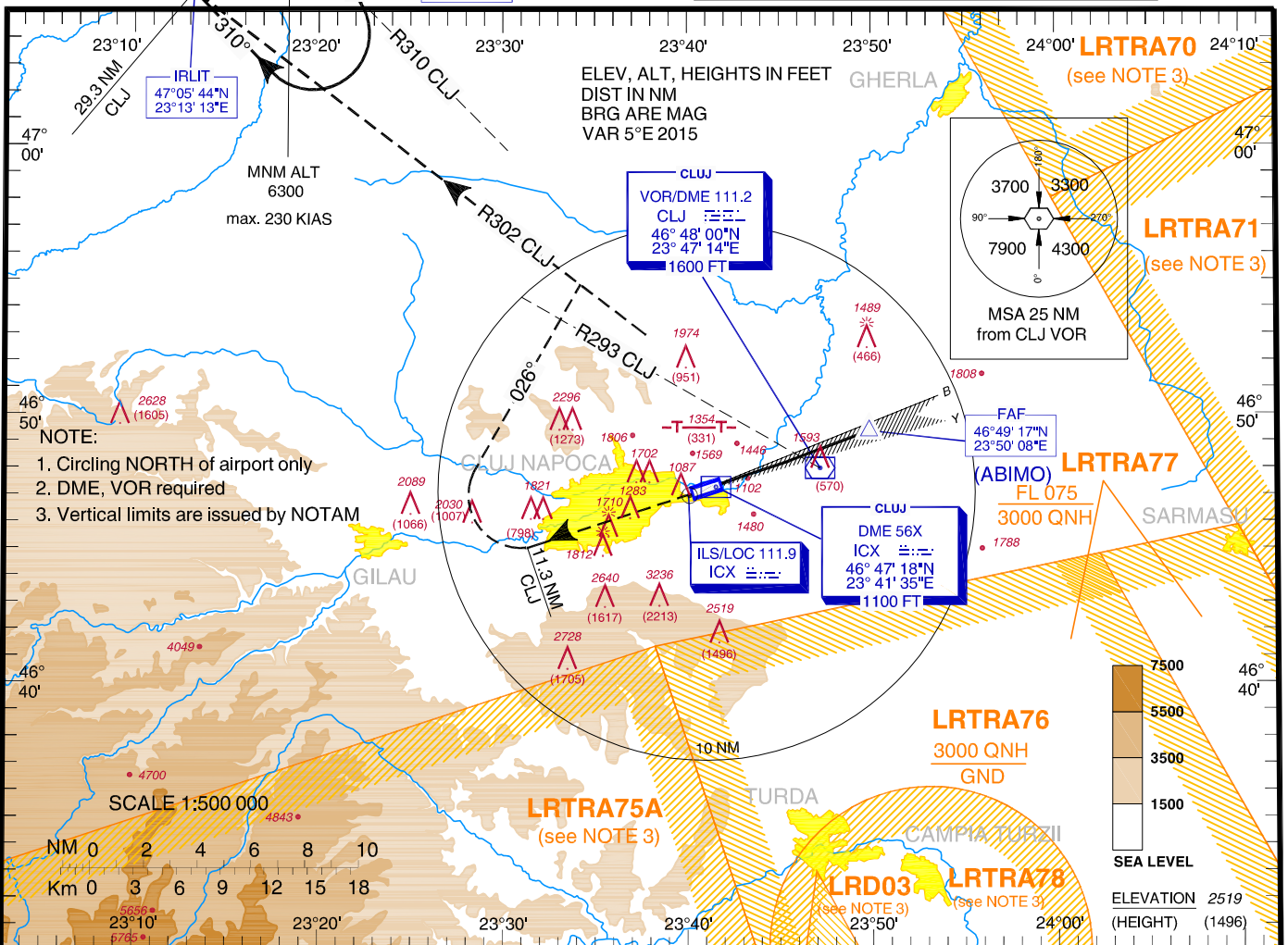
**INSTRUMENT
APPROACH
CHART - ICAO**

AERODROME ELEV. 1039 ft
HEIGHTS RELATED TO
THR RWY 25 - ELEV 1023

CLUJ-NAPOCA / Avram Iancu (LRCL)

NAPOC APPROACH 126.430 Cluj ATIS 125.525
NAPOC NORTH APPROACH 126.430
Cluj Tower 118.705 Cluj Tower ALTN 134.400

**ILS
RWY 25**



Changes: NAPOC APP CH, NAPOC NORTH APP CH.

MISSED APPROACH
Climb straight ahead to 11.3 DME CLJ/ 7.4 DME ICX or 2800, whichever is later, then turn RIGHT, on track 026 to intercept R302 CLJ to IRLIT climbing to 6300 and join APSAM holding or as directed by ATC. -247° Turns limited to max. 230 KT IAS

OCA(H)		A	B	C	D	
Straight-in Approach	CAT I	MAP climb	1226 (203)	1238 (215)	1246 (223)	1257 (234)
		MAP climb Gradient 2.5%				
	CAT II	MAP climb	1196 (173)	1208 (185)	1216 (193)	1227 (204)
		MAP climb Gradient 3.0%				
	GP INOP	w/o stepdown Fix		1920 (897)		
		After stepdown Fix		1350 (327)		
Circling		2060	2190	2540	2700	

GS	kts	70	90	100	120	140	160
FAF-MAPt 5.2 NM	min:s	4:27	3:28	3:07	2:36	2:14	1:57
Rate of descent	ft/min	372	478	531	637	743	849

Timing not authorized for defining MAPt

Distance to DME ICX	NM	2	3	4	5	6
Distance to THR 25	NM	1.8	2.8	3.8	4.8	5.8
Altitude Height	ft	1659 636	1978 955	2296 1273	2615 1592	2933 1910

For data tabulation see verso.

**CLUJ NAPOCA / Avram Iancu (LRCL)
ILS RWY 25**

AERONAUTICAL DATA TABULATION

ILS approach to RWY 25 from ABIMO	
Fix/Point	Coordinates
ABIMO (FAF GP INOP) – BRG 246.82°/6.21NM ICX/2.37NM CLJ	46°49'17.2"N 023°50'08.3"E
2.9 D ICX (Height check / Step down) – BRG 246.76°/2.90NM CLJ	46°48'15.6"N 023°45'33.6"E
1.0 D ICX (MAPT GP INOP) – BRG 246.76°/1.00NM CLJ	46°47'40.1"N 023°42'55.8"E
THR RWY 25	46°47'24.70"N 023°41'47.26"E
ICX LOC	46°47'01.6"N 023°40'04.7"E
11.3 D CLJ	46°45'03.3"N 023°31'22.0"E
29.3 D CLJ IRLIT (Secondary APSAM holding fix) – R302 CLJ	47°05'43.6"N 023°13'12.6"E
24.7 D CLJ APSAM (Holding fix) – R310 CLJ	47°05'34.5"N 023°21'55.7"E