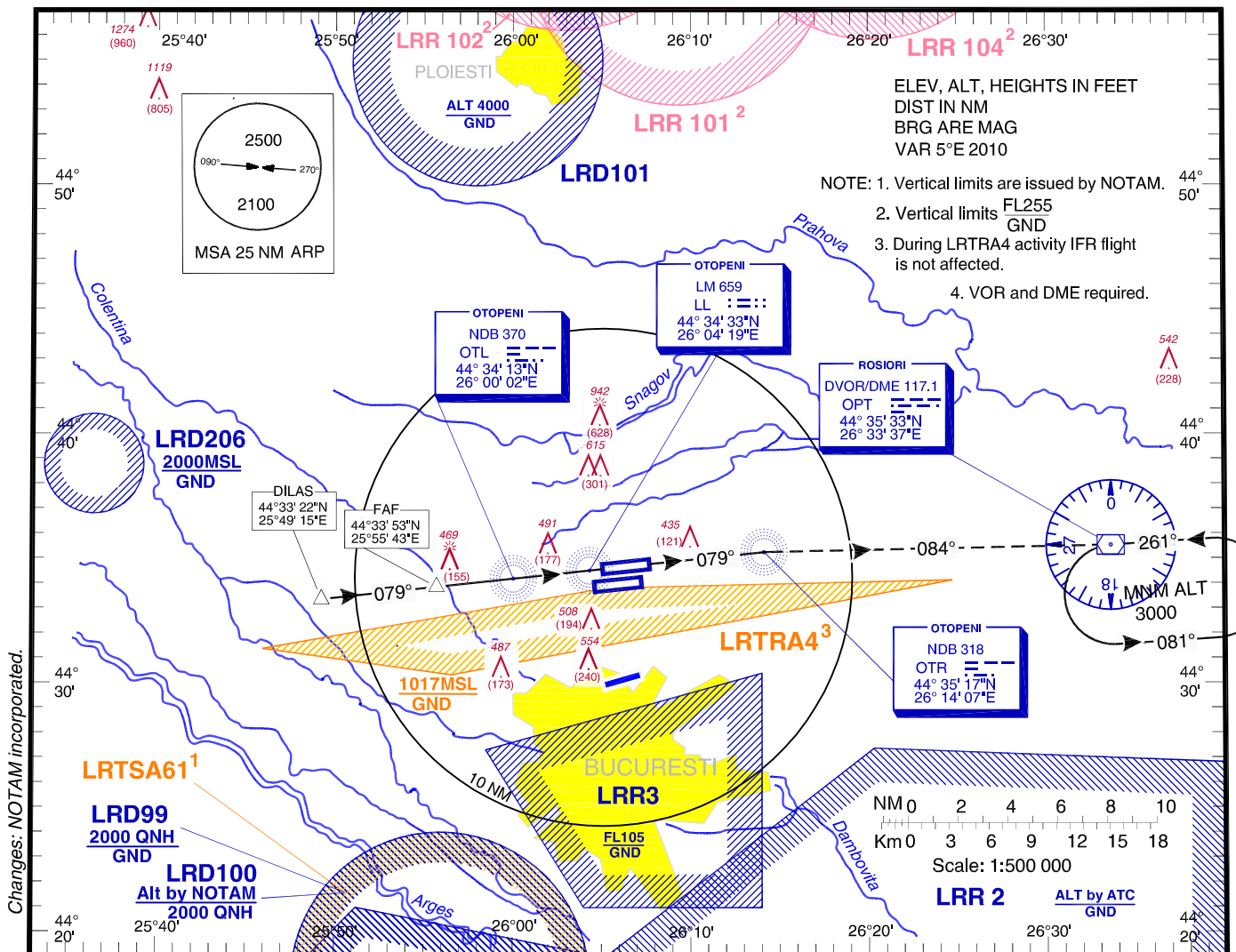


INSTRUMENT APPROACH CHART - ICAO
AERODROME ELEV. 314 FT
HEIGHTS RELATED TO AD ELEV

BUCURESTI APPROACH 119.415
BUCURESTI APP ALTN 120.600
BUCURESTI DIRECTOR 127.155
BUCURESTI DIRECTOR ALTN 120.600

OTOPENI TOWER 118.805
OTOPENI TOWER ALTN 120.900
OTOPENI GROUND 121.855
OTOPENI GROUND ALTN 121.700
OTOPENI ATIS 118.500

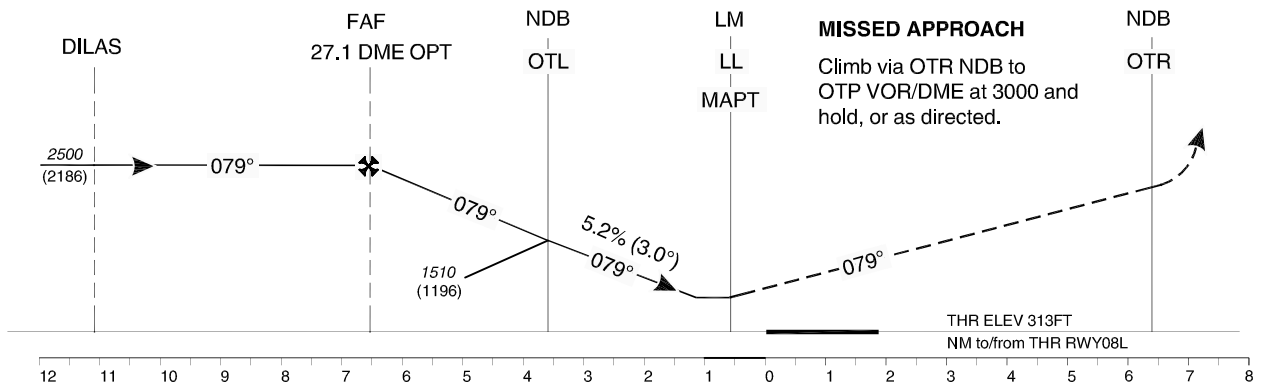
BUCUREȘTI / Henri Coandă (LROP)
NDB
RWY 08L



Changes: NOTAM incorporated.

LRR 2

Transition Altitude
4000



MISSED APPROACH
Climb via OTR NDB to
OTP VOR/DME at 3000 and
hold, or as directed.

OCA/H	A	B	C	D
Straight-in approach	710 (396)		720 (406)	
Circling *	780	790	1010	

GS	kts	70	90	100	120	140	160
FAF-MAPT 6.2 NM	min:s	5:19	4:08	3:43	3:06	2:40	2:19
Rate of descent	ft/min	372	478	531	637	743	849

For data tabulation see verso.

* Circling NORTH of airport only.

BUCURESTI / Henri Coanda (LROP)
NDB RWY 08L

AERONAUTICAL DATA TABULATION

NDB approach to RWY 08L from DILAS	
DILAS	44°33'22.1"N 025°49'14.5"E
27.1 DME OPT (FAF)	44°33'53.0"N 025°55'43.3"E
OTL NDB (Stepdown)	44°34'12.9"N 026°00'02.2"E
LM LL (MAPT)	44°34'32.5"N 026°04'19.0"E
THR RWY 08L	44°34'35.84"N 026°05'02.76"E
OTR NDB	44°35'16.8"N 026°14'07.3"E
OPT VOR/DME	44°35'32.6"N 026°33'36.6"E

Final approach descent angle: 3.00°