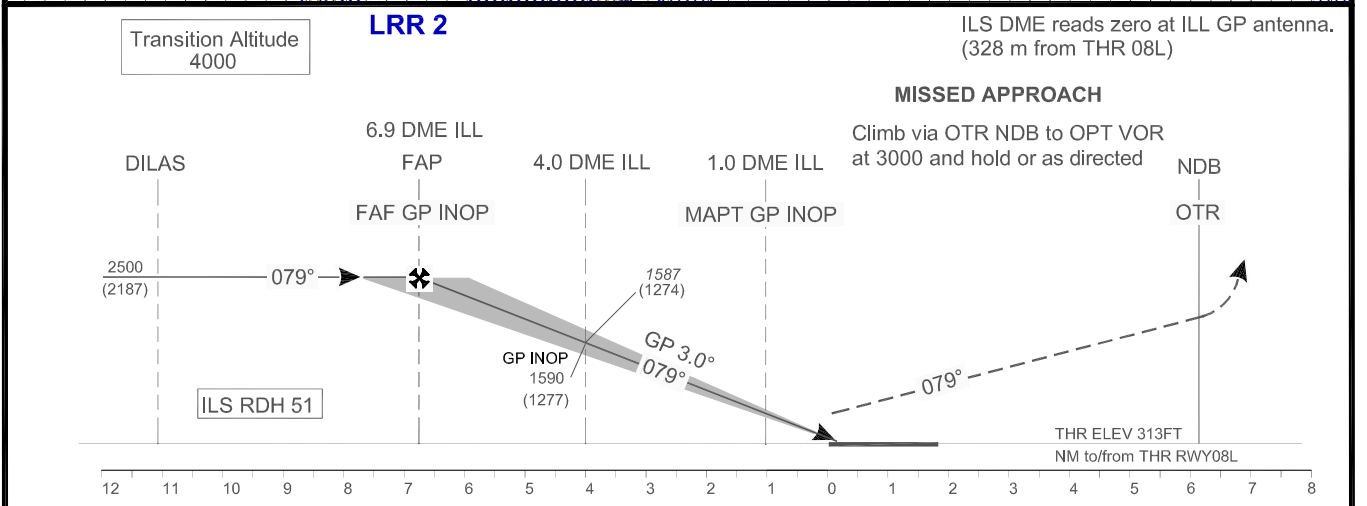
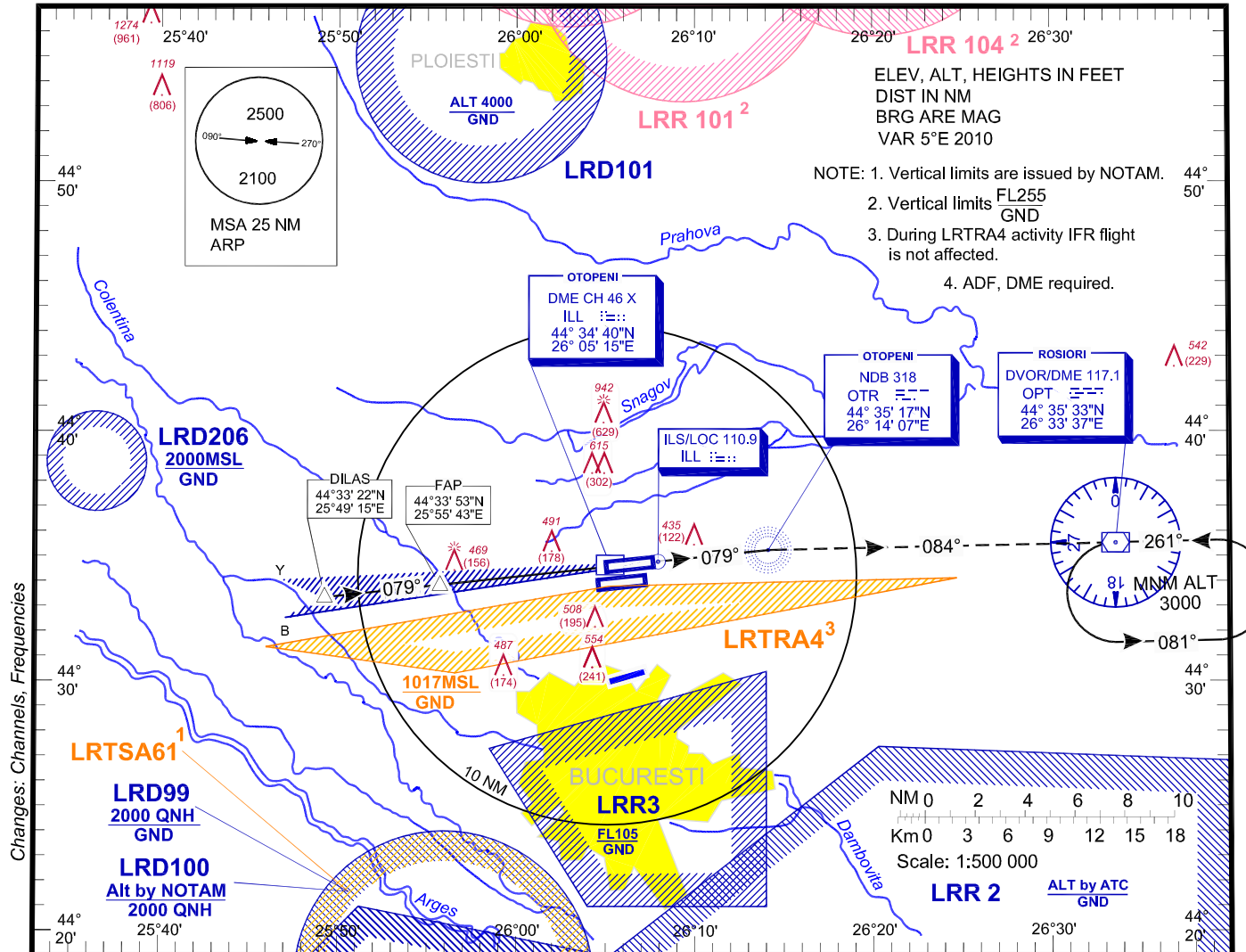


<b>INSTRUMENT AERODROME ELEV. 314 FT</b> <b>APPROACH</b> HEIGHTS RELATED TO <b>CHART - ICAO</b> THR RWY 08L - ELEV. 313 FT	BUCURESTI APPROACH 119.415 BUCURESTI APP ALTN 120.600 BUCURESTI DIRECTOR 127.155 BUCURESTI DIRECTOR ALTN 120.600	OTOPENI TOWER 118.805 OTOPENI TOWER ALTN 120.900 OTOPENI GROUND 121.855 OTOPENI GROUND ALTN 121.700 OTOPENI ATIS 118.500	<b>BUCUREȘTI</b> <b>Henri Coandă (LROP)</b> <b>ILS</b> <b>RWY 08L</b>
--	---	--	--



OCA/H		A	B	C	D
Straight-in approach	ILS CAT I	456 (143)	466 (153)	476 (163)	489 (176)
	ILS CAT II	361 (48)	374 (61)	384 (71)	397 (84)
	ILS GP INOP	690 (376)			
Circling*		780	790	1010	

GS	kts	70	90	100	120	140	160
FAF-MAPT 5.9 NM	min:s	5:04	3:56	3:32	2:57	2:32	2:13
Rate of descent	ft/min	372	478	531	637	743	849

Distance to ILL DME	NM	5	4	3	2
Altitude (Height)	ft	1905 (1592)	1587 (1274)	1268 (955)	950 (637)

Cat III A approved  
 \* Circling NORTH of airport only.  
 For data tabulation see verso.

**BUCURESTI / Henri Coanda (LROP)  
ILS RWY 08L**

**AERONAUTICAL DATA TABULATION**

<b>ILS approach to RWY 08L from DILAS</b>	
<b>DILAS</b>	44°33'22.1"N 025°49'14.5"E
<b>6.9 DME ILL (FAF GP INOP)</b>	44°33'53.0"N 025°55'43.3"E
<b>4.0 DME ILL (Height Check/Stepdown ILS GP INOP)</b>	44°34'11.4"N 025°59'42.7"E
<b>1.0 DME ILL (MAPT GP INOP)</b>	44°34'30.6"N 026°03'53.2"E
<b>THR RWY 08L</b>	44°34'35.84"N 026°05'02.76"E
<b>ILL LOC</b>	44°34'49.0"N 026°07'56.8"E
<b>OTR NDB</b>	44°35'16.8"N 026°14'07.3"E
<b>OPT VOR/DME</b>	44°35'32.6"N 026°33'36.6"E