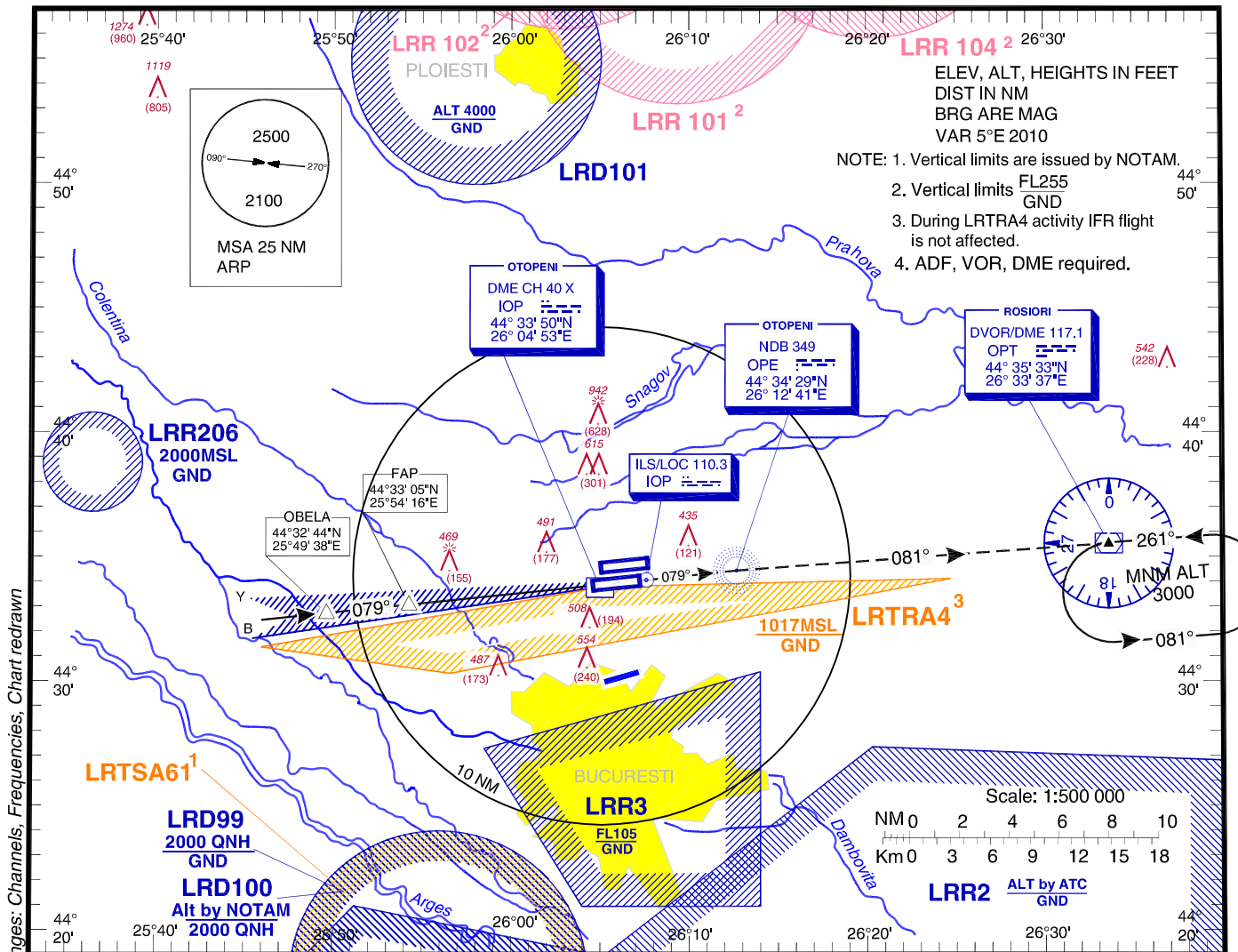


**INSTRUMENT APPROACH CHART - ICAO**  
AERODROME ELEV. **314 FT**  
HEIGHTS RELATED TO AD ELEV

BUCURESTI APPROACH 119.415  
BUCURESTI APP ALTN 120.600  
BUCURESTI DIRECTOR 127.155  
BUCURESTI DIRECTOR ALTN 120.600

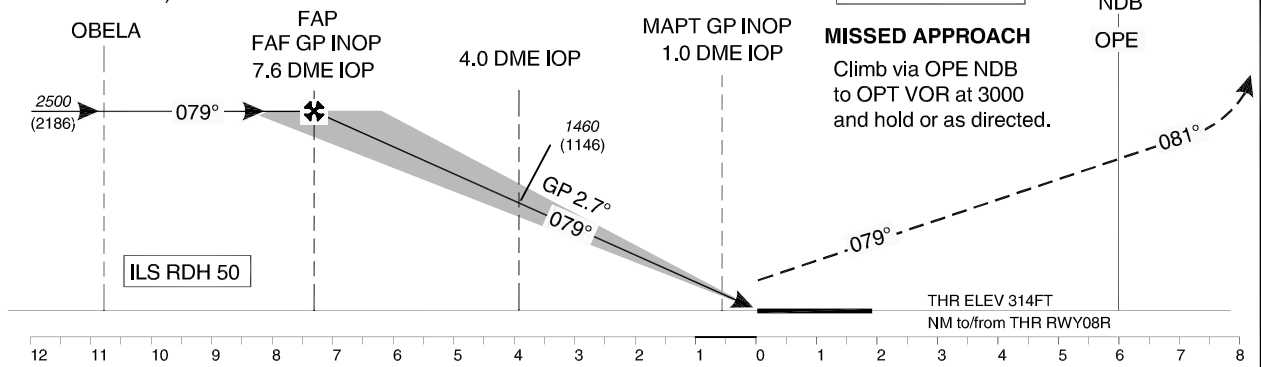
OTOPENI TOWER 118.805  
OTOPENI TOWER ALTN 120.900  
OTOPENI GROUND 121.855  
OTOPENI GROUND ALTN 121.700  
OTOPENI ATIS 118.500

**BUCUREȘTI / Henri Coandă (LROP) ILS RWY 08R**



Changes: Channels, Frequencies, Chart redrawn

ILS DME reads zero at IOP GP antenna.  
(375 m from THR 08R)



		OCA/H	A	B	C	D
Straight-in approach	ILS CAT I	452 (138)	458 (144)	468 (154)	475 (161)	
	ILS CAT II	363 (49)	373 (59)	386 (72)	399 (85)	
	ILS GP INOP	690 (376)				
	Circling*	780	790	1010		

Cat III B approved. RVR not less than 75m.

\* Circling NORTH of airport only

GS	fts	70	90	100	120	140	160
FAF-MAPT 6.6 NM	min:s	5:40	4:24	3:58	3:18	2:50	2:28
Rate of descent	ft/min	334	430	478	573	669	764
Distance to IOP DME	NM	6	5	4	3	2	1
Altitude (Height)	ft	2033 (1719)	1747 (1433)	1460 (1146)	1174 (860)	887 (573)	601 (287)

For data tabulation see verso.

**BUCURESTI / Henri Coanda (LROP)  
ILS RWY 08R**

**AERONAUTICAL DATA TABULATION**

<b>ILS approach to RWY 08R from OBELA</b>	
<b>OBELA</b>	44°32'43.6"N 025°49'38.2"E
<b>FAP/FAF GP INOP</b>	44°33'05.2"N 025°54'15.6"E
<b>4.0 DME IOP (Height Check/Stepdown ILS GP INOP)</b>	44°33'28.5"N 025°59'18.4"E
<b>1.0 DME IOP (MAPT GP INOP)</b>	44°33'47.7"N 026°03'28.9"E
<b>THR RWY 08R</b>	44°33'52.78"N 026°04'36.29"E
<b>IOP LOC</b>	44°34'06.4"N 026°07'36.0"E
<b>OPE NDB</b>	44°34'29.2"N 026°12'40.5"E
<b>OPT VOR/DME</b>	44°35'32.6"N 026°33'36.6"E