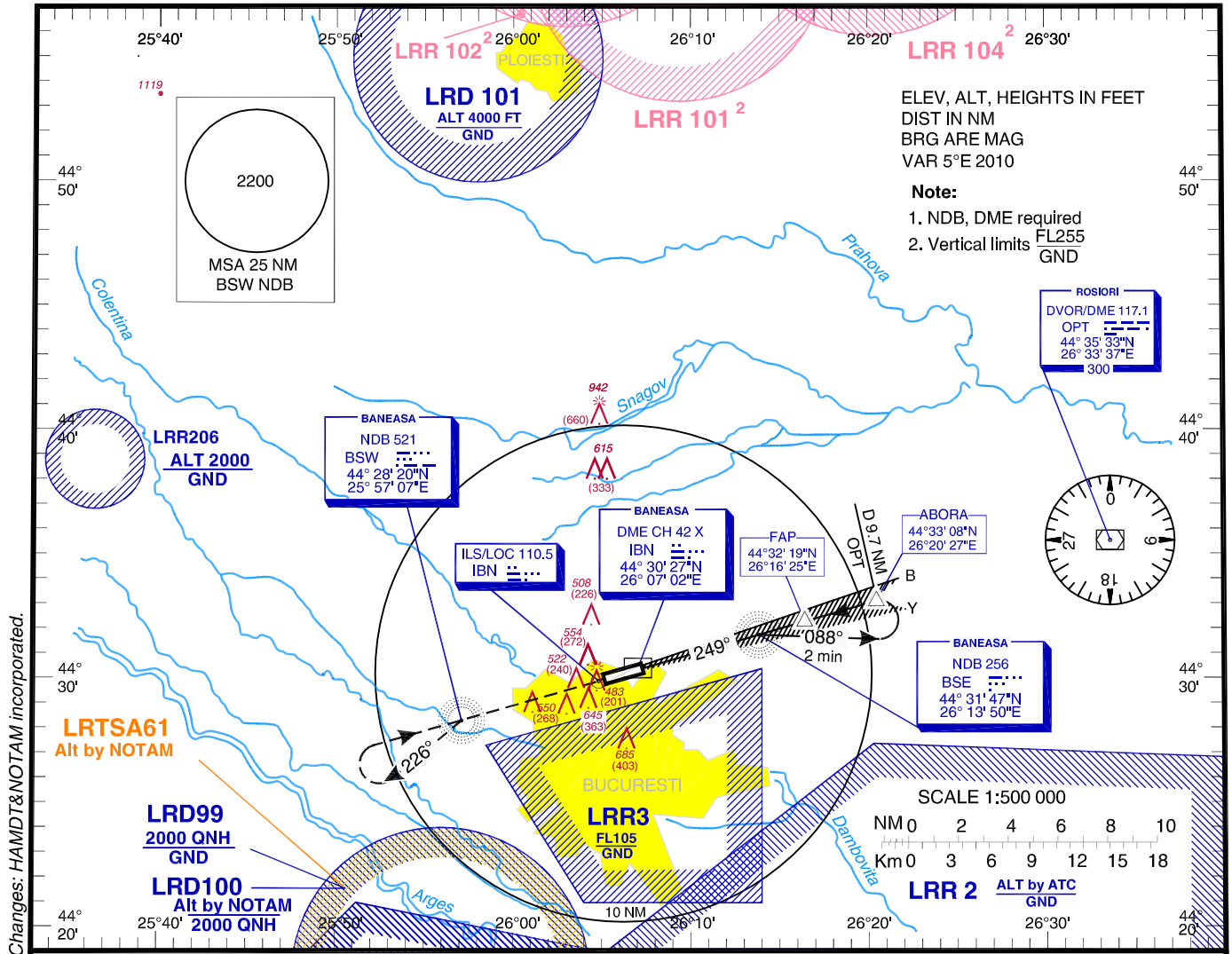


INSTRUMENT AERODROME ELEV 299 FT
APPROACH HEIGHTS RELATED TO
CHART - ICAO THR RWY 25 - ELEV. 282

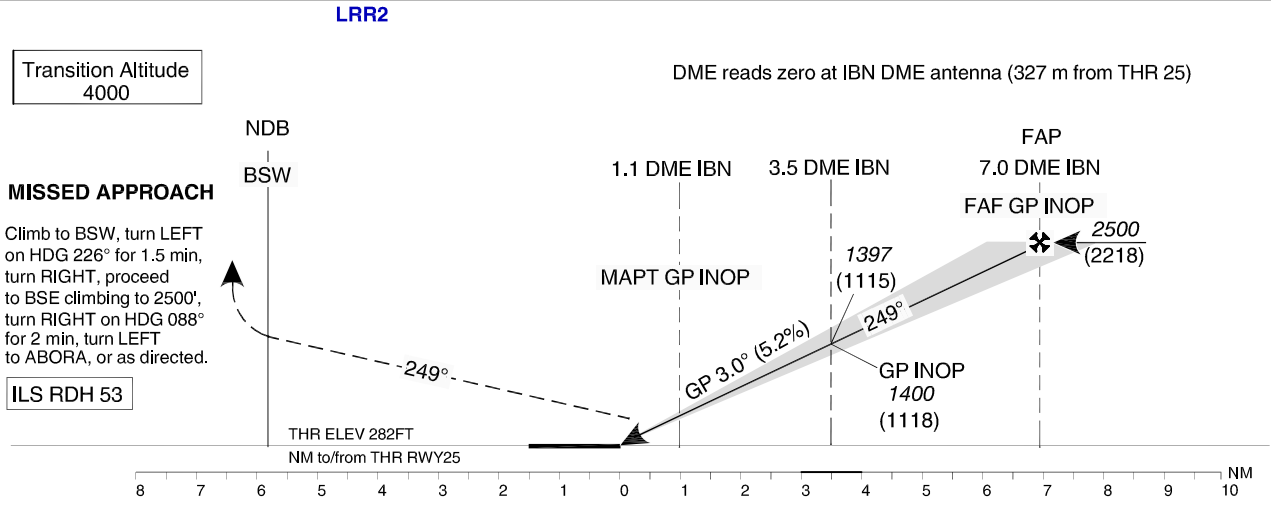
BANEASA TWR	125.205
BANEASA TWR ALTN	120.800
BANEASA GROUND	129.950
BANEASA ATIS	126.125

BUCURESTI VOLMET	126.800
BUCURESTI APPROACH	119.415
BUCURESTI DIRECTOR	127.155
BUCURESTI DIRECTOR ALTN	120.600

BUCUREȘTI
Băneasa-Aurel Vlaicu (LRBS)
ILS RWY 25
CAT A / B



Changes: HAMD&NOTAM incorporated.



Transition Altitude
4000

DME reads zero at IBN DME antenna (327 m from THR 25)

MISSED APPROACH

Climb to BSW, turn LEFT on HDG 226° for 1.5 min, turn RIGHT, proceed to BSE climbing to 2500', turn RIGHT on HDG 088° for 2 min, turn LEFT to ABORA, or as directed.

ILS RDH 53

THR ELEV 282FT
NM to/from THR RWY25

Straight-in approach	OCA(H)	A	B
	ILS CAT I	430 (148)	440 (158)
	ILS GP INOP	640 (358)	
Circling	NOT AUTH.		

GS	kts	70	90	100	120
FAF - MAPT 5.9 NM	min:s	5:04	3:56	3:32	2:57
Rate of descent	ft/min	372	478	531	637

Distance to IBN	NM	2	3	4	5	6
Altitude	ft	919	1237	1556	1874	2193

For data tabulation see verso.

**BUCURESTI / Baneasa-Aurel Vlaicu (LRBS)
ILS RWY 25, CAT A/B**

AERONAUTICAL DATA TABULATION

ILS approach to RWY 25, CAT A/B from ABORA, BSE NDB	
BSE NDB (IAF)	44°31'46.7"N 026°13'49.9"E
ABORA (IAF)	44°33'07.9"N 026°20'27.0"E
7.0 IBN (FAP/FAF GP INOP)	44°32'18.5"N 026°16'25.4"E
3.5 DME IBN (Height Check/Stepdown ILS GP INOP)	44°31'21.2"N 026°11'45.9"E
1.1 DME IBN (MAPT GP INOP)	44°30'41.3"N 026°08'32.4"E
THR RWY 25	44°30'25.8"N 026°07'17.2"E
IBN LOC	44°29'55.3"N 026°04'49.5"E
BSW NDB	44°28'19.5"N 025°57'07.2"E