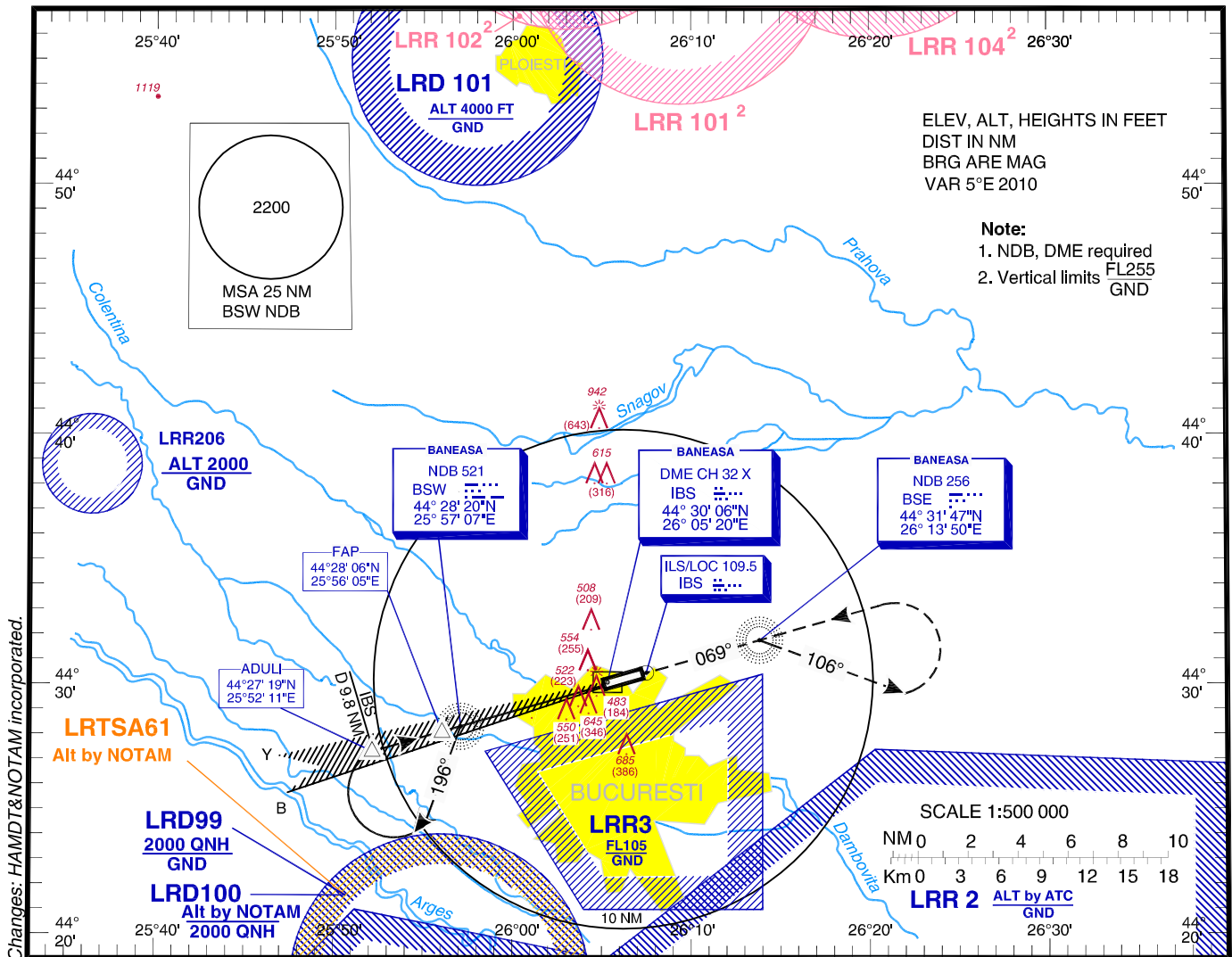


INSTRUMENT AERODROME ELEV. 299 FT
APPROACH HEIGHTS RELATED TO AD ELEV
CHART - ICAO

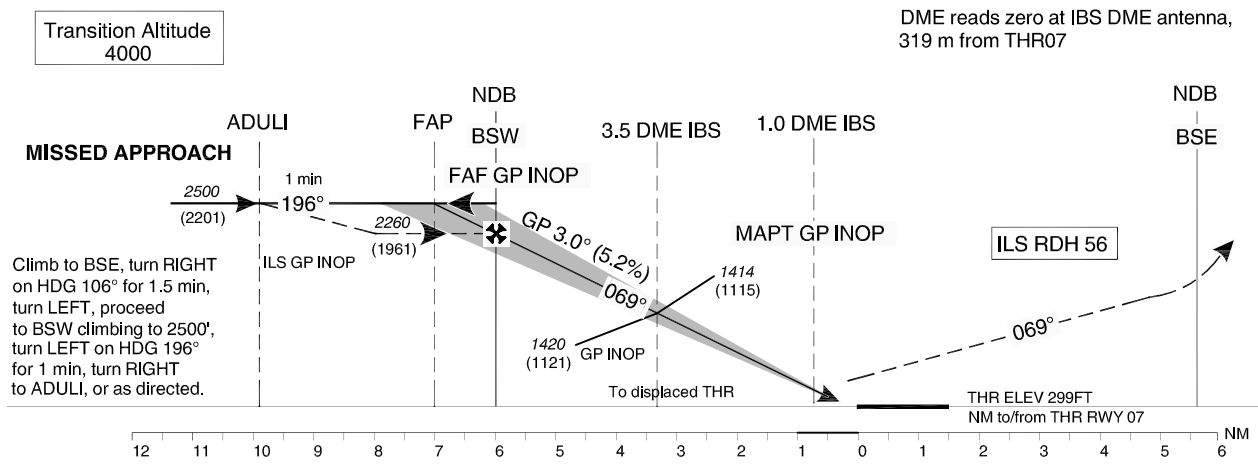
BANEASA TWR	125.205
BANEASA TWR ALTN	120.800
BANEASA GROUND	129.950
BANEASA ATIS	126.125

BUCURESTI VOLMET	126.800
BUCURESTI APPROACH	119.415
BUCURESTI DIRECTOR	127.155
BUCURESTI DIRECTOR ALTN	120.600

BUCUREȘTI
Băneasa-Aurel Vlaicu (LRBS)
ILS RWY 07
CAT C / D



Changes: HAMDT&NOTAM incorporated.



	OCA(H)	C	D
Straight-in approach	ILS CAT I	462 (163)	476 (177)
	ILS CAT II	372 (73)	385 (86)
	ILS GP INOP	710 (411)	
Circling	NOT AUTH.		

GS	fts	100	120	140	160
FAF - MAPT 5.1 NM	min:s	3:04	2:33	2:11	1:55
Rate of descent	ft/min	531	637	743	849

Distance to IBS DME	NM	6	5	4	3	2
Altitude	ft	2210	1891	1573	1254	936

For data tabulation see verso.

**BUCURESTI / Baneasa-Aurel Vlaicu (LRBS)
ILS RWY 07, CAT C/D**

AERONAUTICAL DATA TABULATION

ILS approach to RWY 07, CAT C/D from ADULI, BSW NDB	
BSW NDB (IAF/FAF GP INOP)	44°28'19.5"N 025°57'07.2"E
ADULI (IAF)	44°27'18.6"N 025°52'11.4"E
FAP	44°28'06.4"N 025°56'04.9"E
3.5 DME IBS (Height Check/Stepdown ILS GP INOP)	44°29'03.5"N 026°00'39.6"E
1.0 DME IBS (MAPT GP INOP)	44°29'45.3"N 026°04'01.0"E
THR RWY 07	44°29'59.27"N 026°05'08.68"E
IBS LOC	44°30'28.5"N 026°07'30.3"E
BSE NDB	44°31'46.7"N 026°13'49.9"E