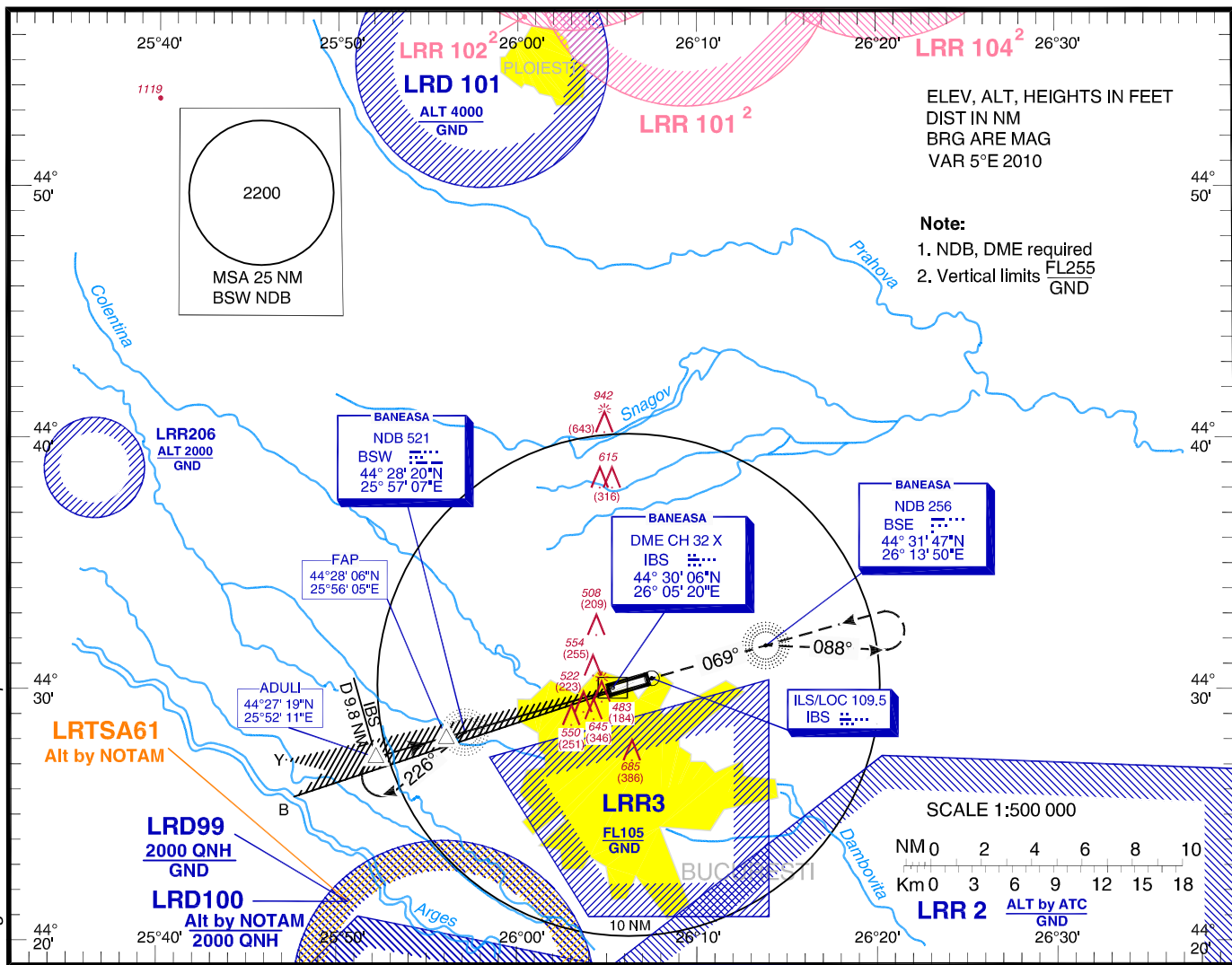


**INSTRUMENT** AERODROME ELEV. **299 FT**  
**APPROACH** HEIGHTS RELATED TO AD ELEV  
**CHART - ICAO**

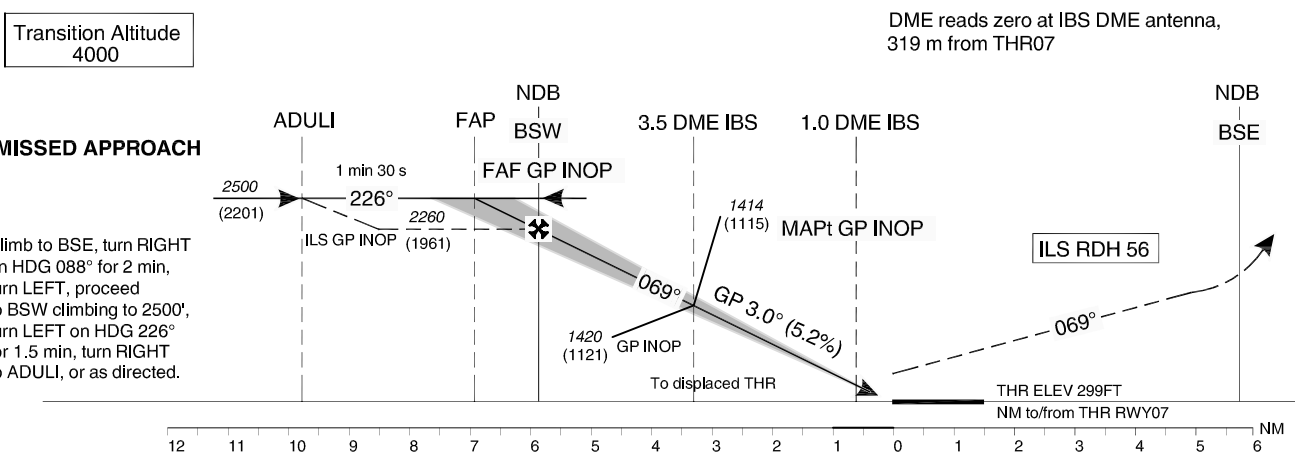
BANEASA TWR	125.205
BANEASA TWR ALTN	120.800
BANEASA GROUND	129.950
BANEASA ATIS	126.125

BUCURESTI VOLMET	126.800
BUCURESTI APPROACH	119.415
BUCURESTI DIRECTOR	127.155
BUCURESTI DIRECTOR ALTN	120.600

**BUCUREȘTI**  
**Băneasa-Aurel Vlaicu (LRBS)**  
**ILS RWY 07**  
**CAT A / B**



Changes: HAMDT&NOTAM incorporated.



OCA(H)	A	B	
Straight-in approach	ILS CAT I	440 (141)	450 (151)
	ILS CAT II	348 (49)	359 (60)
	ILS GP INOP	710 (411)	
Circling	NOT AUTH.		

GS	kts	70	90	100	120
FAF - MAPt 5.1 NM	min:s	4:22	3:24	3:04	2:33
Rate of descent	ft/min	371	478	531	637

Distance to IBS DME	NM	6	5	4	3	2
Altitude	ft	2210	1891	1573	1254	936

For data tabulation see verso.

**BUCURESTI / Baneasa-Aurel Vlaicu (LRBS)  
ILS RWY 07, CAT A/B**

**AERONAUTICAL DATA TABULATION**

<b>ILS approach to RWY 07, CAT A/B from ADULI, BSW NDB</b>	
<b>BSW NDB (IAF/FAF GP INOP)</b>	44°28'19.5"N 025°57'07.2"E
<b>ADULI (IAF)</b>	44°27'18.6"N 025°52'11.4"E
<b>FAP</b>	44°28'06.4"N 025°56'04.9"E
<b>3.5 DME IBS (Height Check/Stepdown ILS GP INOP)</b>	44°29'03.5"N 026°00'39.6"E
<b>1.0 DME IBS (MAPT GP INOP)</b>	44°29'45.3"N 026°04'01.0"E
<b>THR RWY 07</b>	44°29'59.27"N 026°05'08.68"E
<b>IBS LOC</b>	44°30'28.5"N 026°07'30.3"E
<b>BSE NDB</b>	44°31'46.7"N 026°13'49.9"E