

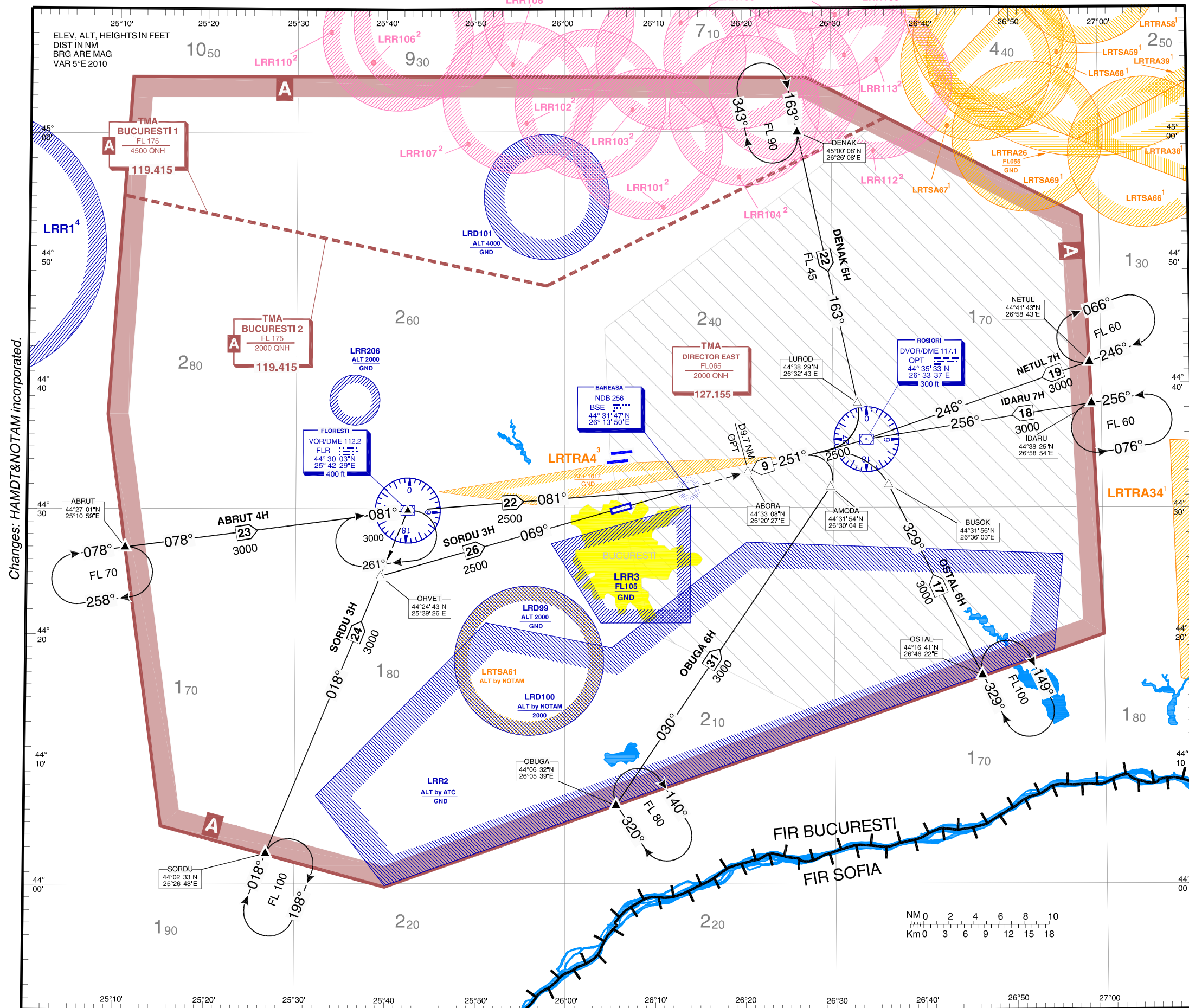
STANDARD ARRIVAL CHART -  
INSTRUMENT (STAR) - ICAO

TRANSITION ALTITUDE  
4000 FT  
TMA SPEED LIMIT  
MAX IAS 250 kt BELOW FL100

BANEASA TWR 125.205  
BANEASA TWR ALTN 120.800  
BANEASA GND 129.950

BANEASA ATIS 126.125  
BUCURESTI VOLMET 126.800  
BUCURESTI APPROACH 119.415  
BUCURESTI APP ALTN 120.600  
BUCURESTI DIRECTOR 127.155  
BUCURESTI DIRECTOR ALTN 120.600

BUCUREȘTI / Băneasa-Aurel Vlaicu  
RWY 25 (LRBS)  
ABRUT 4H DENAK 5H IDARU 7H  
NETUL 7H OBUGA 6H OSTAL 6H SORDU 3H



Standard Instrument Arrival Routes (STAR) are also noise abatement routings. Strict adherence within the limit of performance criteria is mandatory.

DESIGNATOR ARRIVAL ROUTE	ARRIVAL ROUTE AND LEVEL INSTRUCTIONS
ABRUT 4H	RDL 258 FLR VOR/DME inbound to FLR VOR/DME, intercept RDL 081 FLR VOR/DME to BSE NDB.
DENAK 5H	RDL 343 OPT VOR/DME inbound to OPT VOR/DME, at LUROD turn RIGHT, RDL 251° OPT VOR/DME to ABORA.
IDARU 7H	RDL 076 OPT VOR/DME inbound to OPT VOR/DME, RDL 251° OPT VOR/DME to ABORA.
NETUL 7H	RDL 066 OPT VOR/DME inbound to OPT VOR/DME, RDL 251° OPT VOR/DME to ABORA.
OBUGA 6H	RDL 210 OPT VOR/DME inbound to OPT VOR/DME, at AMODA turn LEFT, RDL 251° OPT VOR/DME to ABORA.
OSTAL 6H	RDL 149 OPT VOR/DME inbound to OPT VOR/DME, at BUSOK turn LEFT, RDL 251° OPT VOR/DME to ABORA.
SORDU 3H	RDL 198 FLR VOR/DME inbound to ORVET, turn RIGHT, RDL 249 OPT VOR/DME inbound to BSE NDB.

NOTE: 1. Vertical limits are issued by NOTAM

2. Vertical limits  $\frac{FL255}{GND}$

3. During LRTRA4 activity, IFR flight is not affected

4. Vertical limits

$\frac{FL 60}{GND}$  for subsonic FLT

$\frac{FL660}{GND}$  for supersonic FLT

RADIO COMMUNICATION FAILURE

- If RWY was assigned or received by ATC or ATIS, set transponder 7600, proceed according FPL and assigned or designated STAR. Descending shall be executed in accordance with vertical restrictions specified on chart after 2 min. from setting 7600.
- If RWY was assigned or received by ATC or ATIS and vectoring was initiated, set transponder 7600 and continue on assigned heading and last cleared and acknowledged altitude for 2 min. from setting 7600. Then proceed direct to OPT VOR/DME then ABORA. Descending shall be executed in accordance with minimum altitude of Bucharest TMA or vertical restrictions specified on Radar Minimum Altitude Chart, whichever is greater, but not less than 2500 ft.
- If STAR was not assigned and RWY not assigned or received by ATC or ATIS, set transponder 7600, proceed according to FPL and FPL STAR. Descending shall be executed in accordance with vertical restrictions specified on chart after 2 min. from setting 7600.

Changes: HAMDT&NOTAM incorporated.