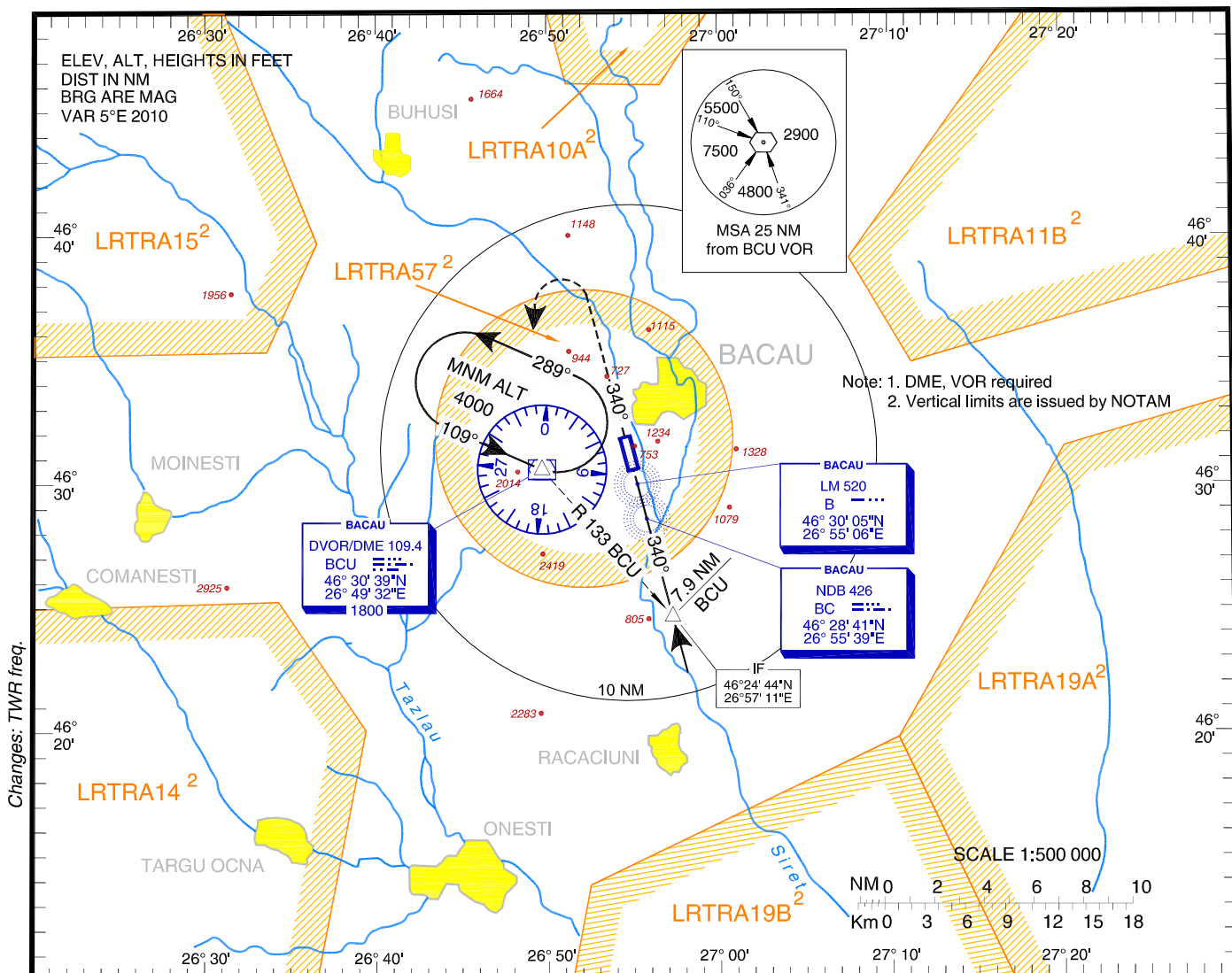


**INSTRUMENT APPROACH
CHART - ICAO**

AERODROME ELEV. 607 ft
HEIGHTS RELATED TO
THR RWY 34 - ELEV 591 ft

BACAU TOWER 120.980
BACAU TOWER ALTN 118.600

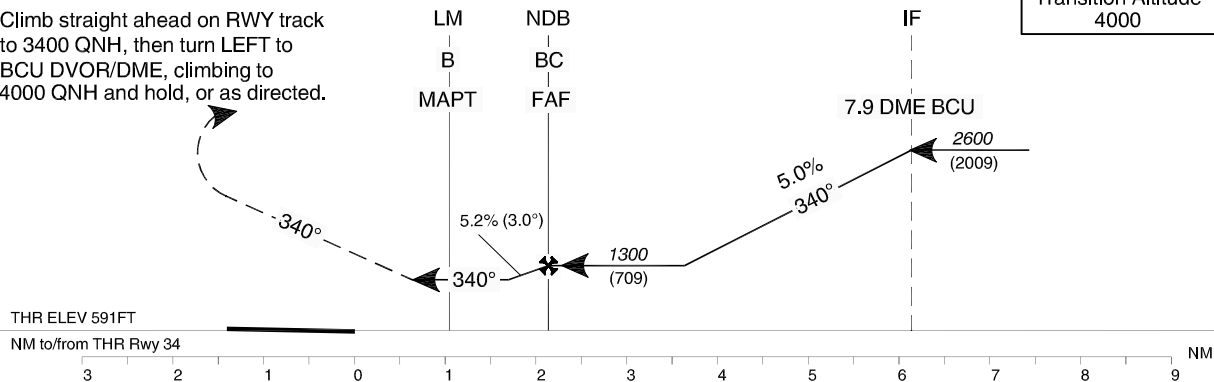
**BĂCAU / George Enescu
(LRBC)
NDB RWY 34**



MISSED APPROACH:

Climb straight ahead on RWY track to 3400 QNH, then turn LEFT to BCU DVOR/DME, climbing to 4000 QNH and hold, or as directed.

Transition Altitude
4000



OCA/H	A	B	C	D
Straight-in approach	1200 (609)			
Circling	1630	2640	2820	

GS	fts	70	90	100	120	140	160
FAF-MAPT 1.5 NM	min:s	1:17	1:00	0:54	0:45	0:39	0:34
Rate of descent	ft/min	372	478	531	637	743	849
For data tabulation see verso.							

BACĂU / George Enescu (LRBC)
NDB RWY 34

AERONAUTICAL DATA TABULATION

NDB approach to RWY 34	
Fix/Point	Coordinates
IF – BRG 132.88° / 7.94NM BCU	46°24'44.5"N 026°57'11.3"E
BC NDB (FAF)	46°28'41.2"N 026°55'38.7"E
B LM (MAPT)	46°30'05.2"N 026°55'05.6"E
THR RWY 34	46°30'39.97"N 026°54'51.92"E
BCU DVOR/DME	46°30'39.3"N 026°49'32.0"E

Final approach descent angle: 3.00°