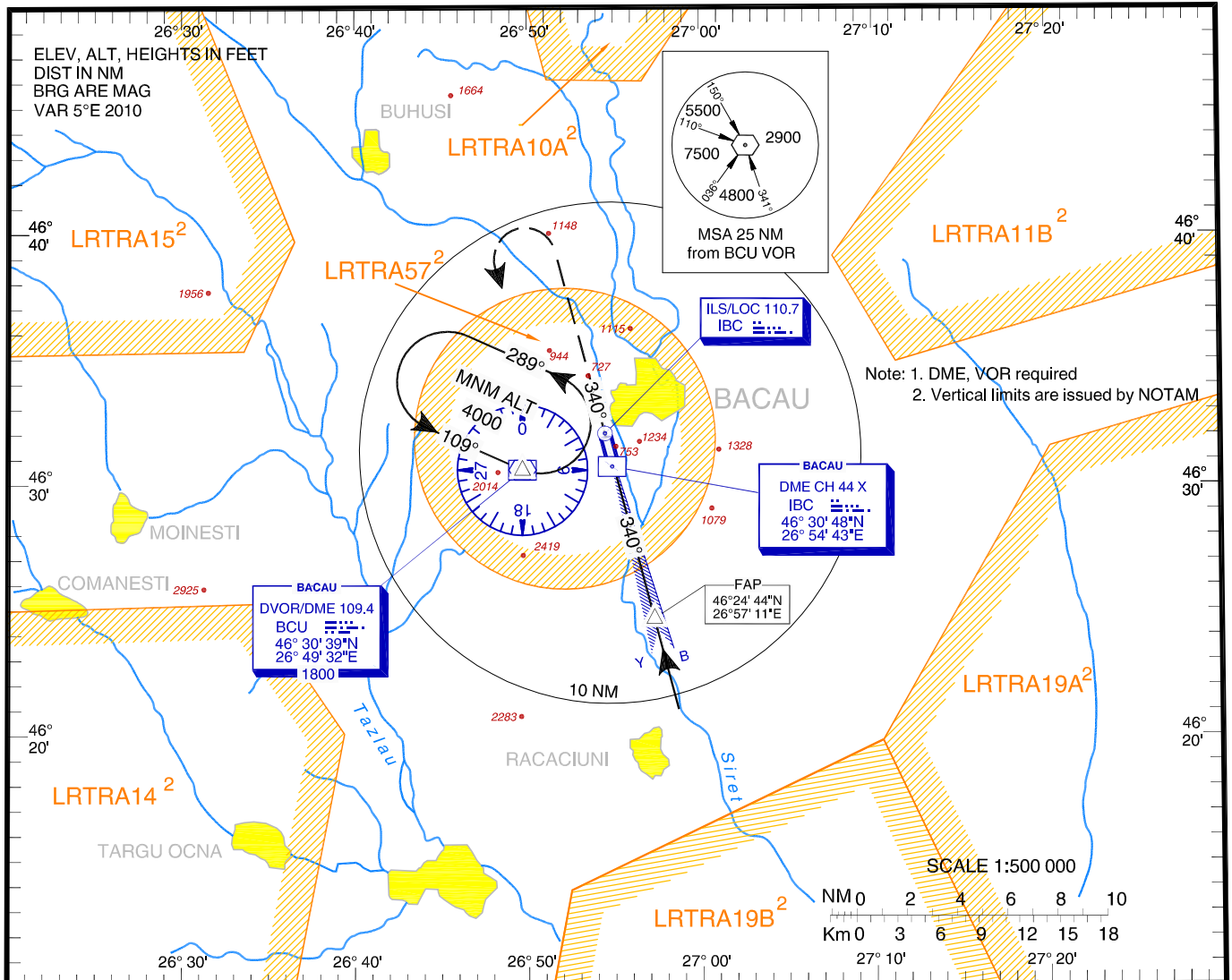


INSTRUMENT APPROACH CHART - ICAO AERODROME ELEV. **607 ft**
HEIGHTS RELATED TO
THR RWY 34 - ELEV 591 ft

BACĂU / George Enescu (LRBC)
ILS RWY 34

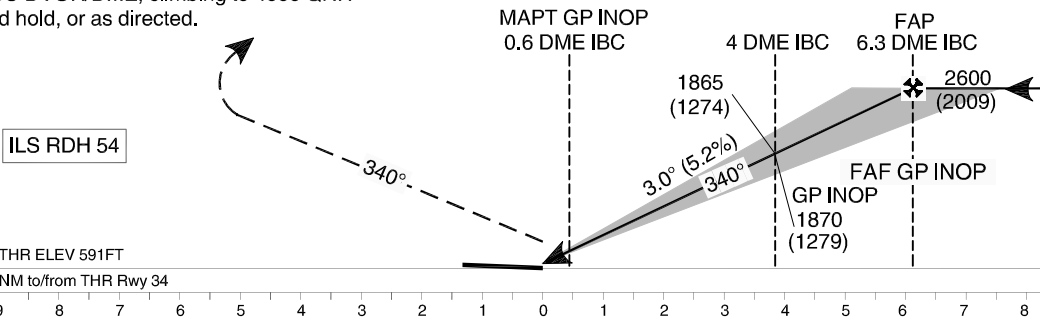
BACAU TOWER 120.980
BACAU TOWER ALTN 118.600



MISSED APPROACH:
Climb straight ahead on RWY track to 3400 QNH then turn LEFT to BCU DVOR/DME, climbing to 4000 QNH and hold, or as directed.

ILS DME reads zero at IBC GP antenna (297 m beyond THR 34)

Transition Altitude 4000



OCA(H)	A	B	C	D
Straight-in approach		791 (200)		
ILS GP INOP		920 (329)		
Circling	1630		2640	2820

GS	kts	70	90	100	120	140	160
FAF-MAPT 5.7 NM	min:s	4:53	3:48	3:25	2:51	2:27	2:08
Rate of descent	ft/min	372	478	531	637	743	849

Distance to TDZ	NM	1	2	3	4	5
Altitude	ft	909	1228	1546	1865	2183

For data tabulation see verso.

BACĂU / George Enescu (LRBC)
ILS RWY 34

AERONAUTICAL DATA TABULATION

ILS approach to RWY 34	
Fix/Point	Coordinates
FAP/FAF GP INOP-BRG 132.88°/7.94NM BCU	46°24'44.5"N 026°57'11.3"E
MAPT	46°30'14.2"N 026°55'02.0"E
THR RWY 34	46°30'39.97"N 026°54'51.92"E
IBC LOC	46°32'07.5"N 026°54'17.5"E
BCU DVOR/DME	46°30'39.3"N 026°49'32.0"E