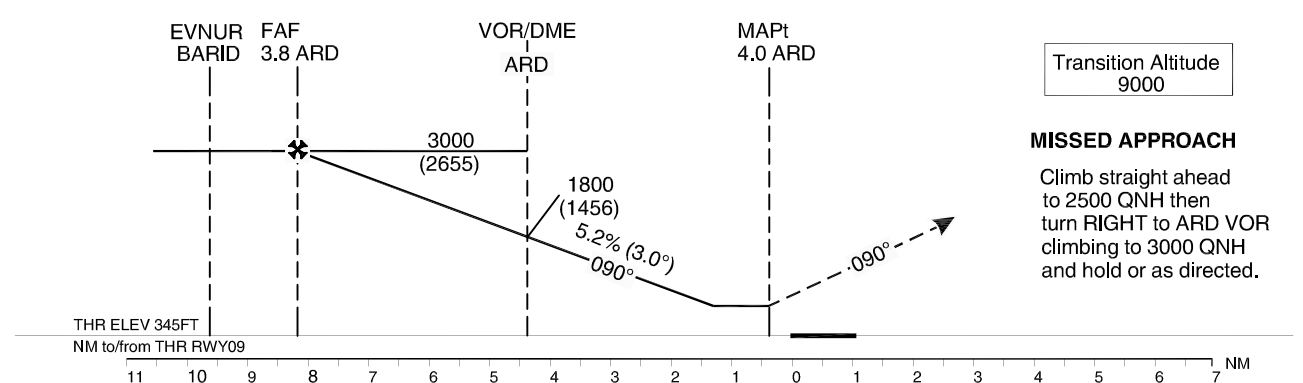
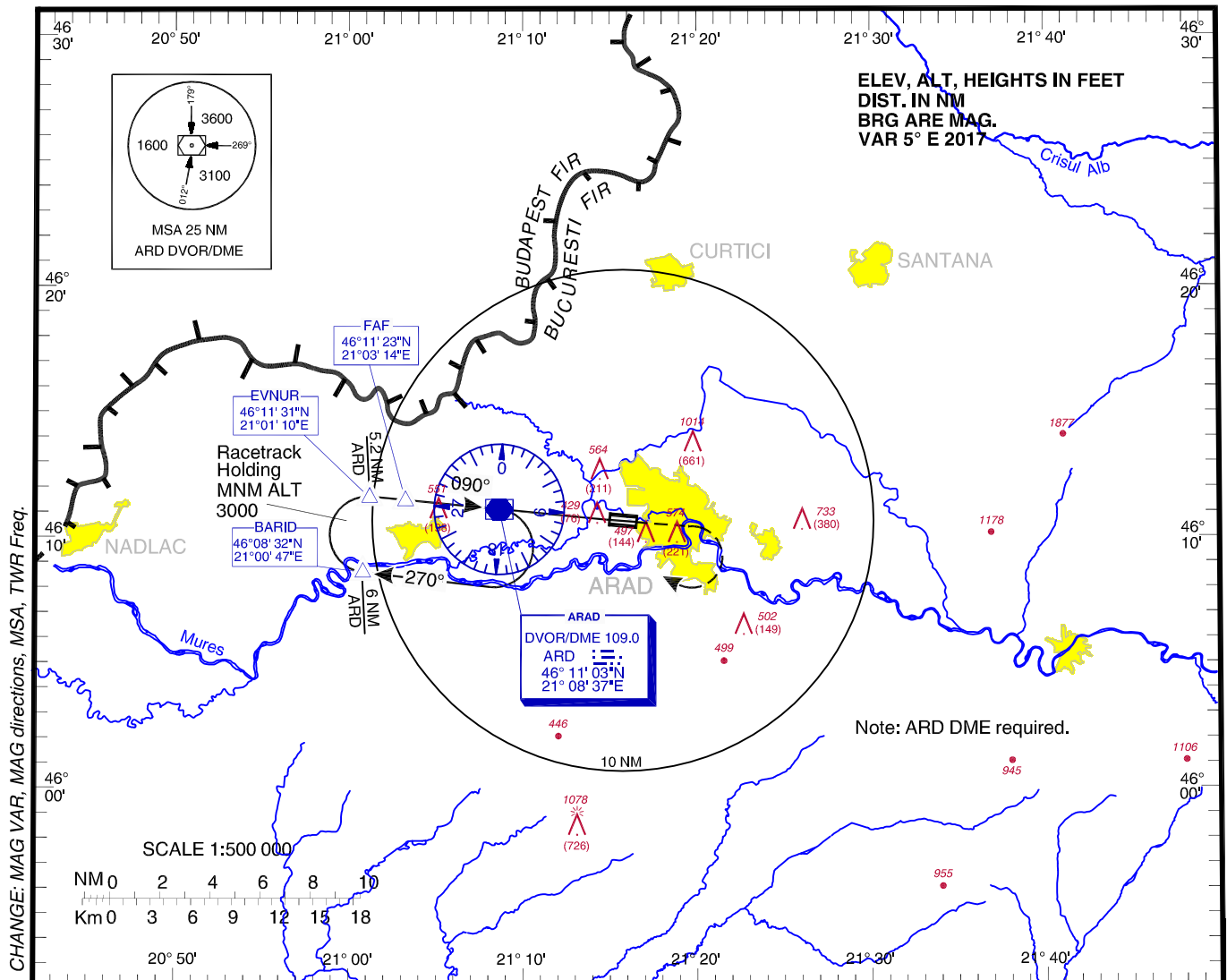


**INSTRUMENT APPROACH
CHART - ICAO**

AERODROME ELEV. 353 ft
HEIGHTS RELATED TO AD ELEV

Arad Approach	123.530
Arad Approach ALTN	126.350
Arad Tower	118.230
Arad Tower ALTN	130.200

ARAD / Arad (LRAR)
VOR
RWY 09



OCA(H)	A	B	C	D
Straight-in Approach	810			
Circling	870		1410	

	kts	70	90	100	120	140	160
FAF-MAPT 7.8 NM	min:s	6:41	5:12	4:41	3:54	3:21	2:55
Rate of descent	ft/min	372	425	531	637	743	849
Dist to/from ARD DME	NM	2/	1/	/1	/2	/3	
Altitudes (Heights)	ft	2438 (2083)	2119 (1774)	1482 (1137)	1164 (819)	846 (501)	

For data tabulation see verso

ARAD / Arad (LRAR)
VOR RWY 09

AERONAUTICAL DATA TABULATION

VOR Approach to RWY 09	
Fix/Point	Coordinates
ARD DVOR/DME (Stepdown)	46°11'02.7"N 021°08'37.0"E
BARID - BRG 240.00°/ 6.00NM ARD	46°08'31.8"N 021°00'46.8"E
EVNUR - BRG 089.89°/ 5.20NM ARD	46°11'30.6"N 021°01'09.7"E
3.8 NM ARD (FAF)	46°11'23.1"N 021°03'14.0"E
4.0 NM ARD (MAPT)	46°10'40.9"N 021°14'21.0"E
THR RWY 09 – 4.4 DME ARD	46°10'38.57"N 021°14'56.86"E

Final approach descent angle: 3.00°