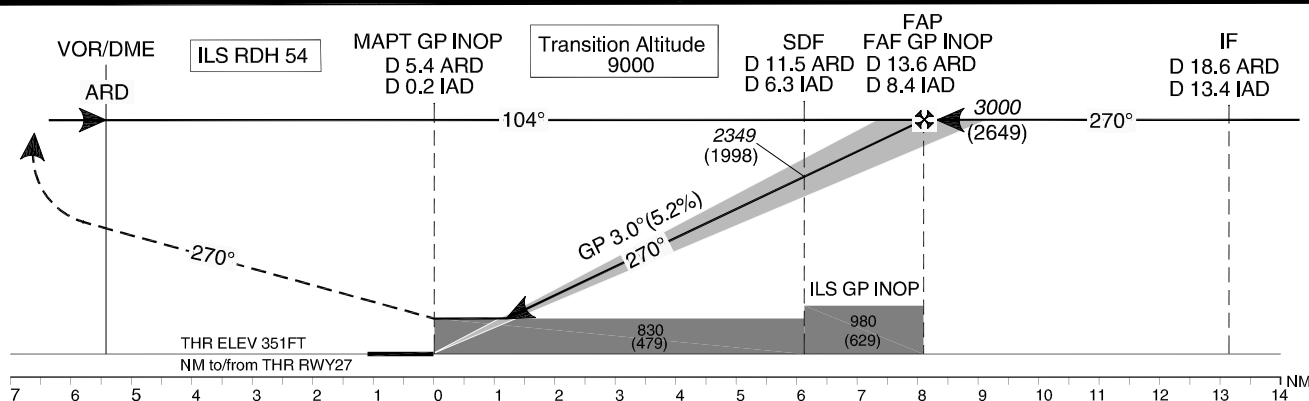
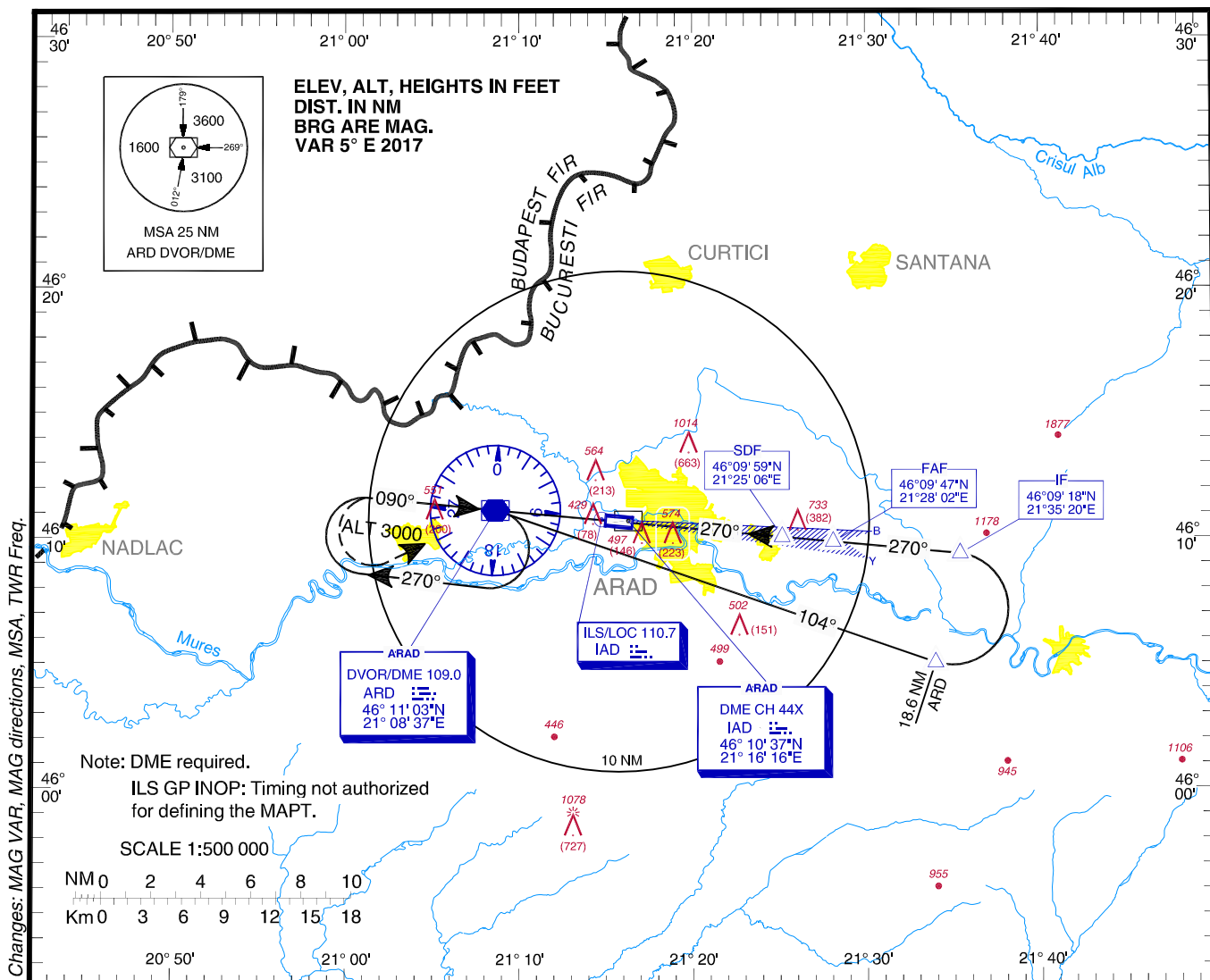


**INSTRUMENT APPROACH  
CHART - ICAO**

**AERODROME ELEV. 353 FT**  
HEIGHTS RELATED TO THR ELEV 351 FT

Arad Approach	123.530
Arad Approach ALTN	126.350
Arad Tower	118.230
Arad Tower ALTN	130.200

**ARAD / Arad (LRAR)**  
**ILS RWY 27**  
**CAT C, D**



**MISSED APPROACH**

Climb straight ahead to ARD DVOR; on R270.  
ARD climb to 2300; LT, direct to ARD DVOR  
climbing to 3000 and join holding.

OCA(H)	C	D
CAT I	567 (216)	578 (227)
CAT II	479 (128)	493 (142)
ILS GP INOP	FAF-SDF	980 (629)
	SDF-MAPT	830 (479)
Circling	1410	

GS	kts	120	140	160						
FAF-MAPT 8.2 NM	min:s	4:06	3:31	3:04						
Rate of descent	ft/min	640	740	850						
Dist to DME IAD	NM	1	2	3	4	5	6.3 (SDF)	6	7	8
Dist to THR 27	NM	0.8	1.8	2.8	3.8	4.8	6.1	5.8	6.8	7.8
Altitudes (Heights)	ft	667 (316)	986 (635)	1304 (953)	1623 (1272)	1941 (1590)	2349 (1998)	2260 (1909)	2578 (2227)	2897 (2546)

For data tabulation see verso

ARAD / Arad (LRAR)  
ILS RWY 27, CAT C, D

AERONAUTICAL DATA TABULATION

ILS approach to RWY 27 from ARD DVOR/DME	
Fix/Point	Coordinates
ARD DVOR/DME (IAF)	46°11'02.7"N 021°08'37.0"E
18.6 D ARD – Outbound 103.80° ARD VOR	46°04'57.4"N 021°33'54.0"E
13.4 D IAD / 18.6 D ARD (IF) – BRG 270.34° ARD VOR	46°09'18.2"N 021°35'19.7"E
8.4 D IAD / 13.6 D ARD (FAF) – BRG 270.25° ARD VOR	46°09'47.4"N 021°28'02.0"E
6.3 D IAD / 11.5 D ARD (SDF) – BRG 270.22° ARD VOR	46°09'59.0"N 021°25'06.1"E
0.2 D IAD / 5.4 D ARD (MAPT) – BRG 270.11° ARD VOR	46°10'33.1"N 021°16'21.6"E
THR RWY 27	46°10'33.14"N 021°16'21.34"E