

**AERODROME CHART - ICAO**  
46° 10' 36" N  
021° 15' 43" E

**ELEV 353FT**

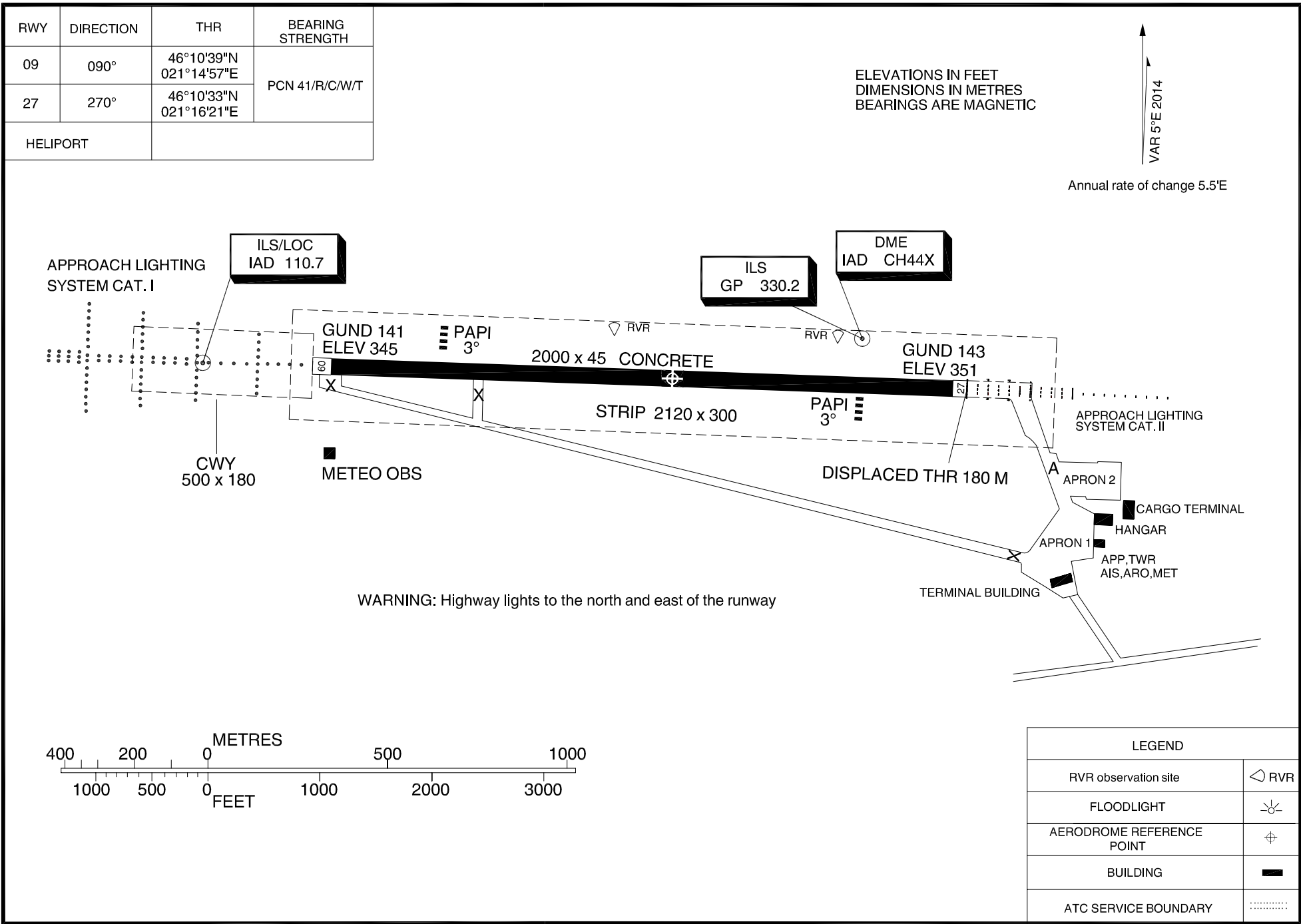
Arad Tower 118,230  
Arad Tower ALTN 130,200

**ARAD / Arad (LRAR)**

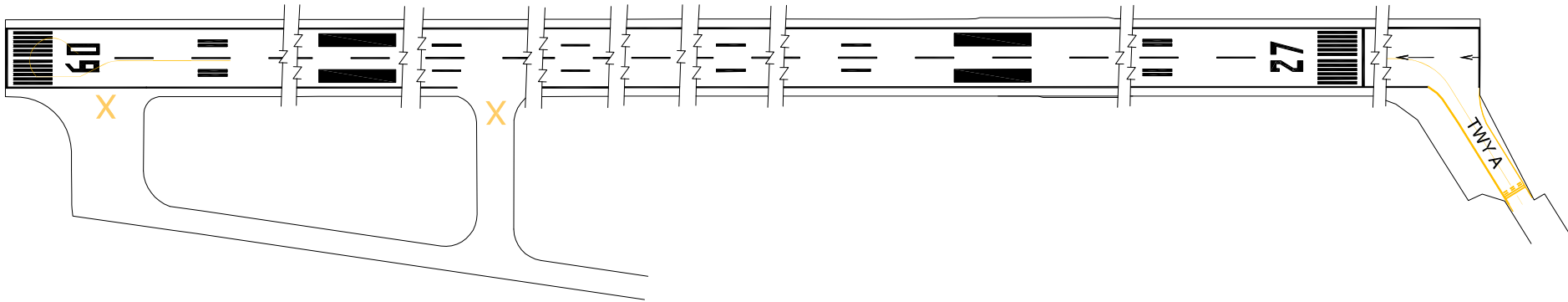
Changes: RWY direction, Mag. Var, THR GUND, TWR Freq/Ch.

ROMATSA

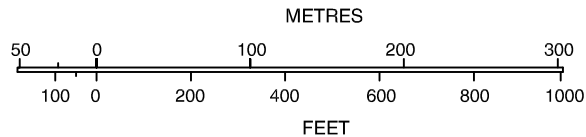
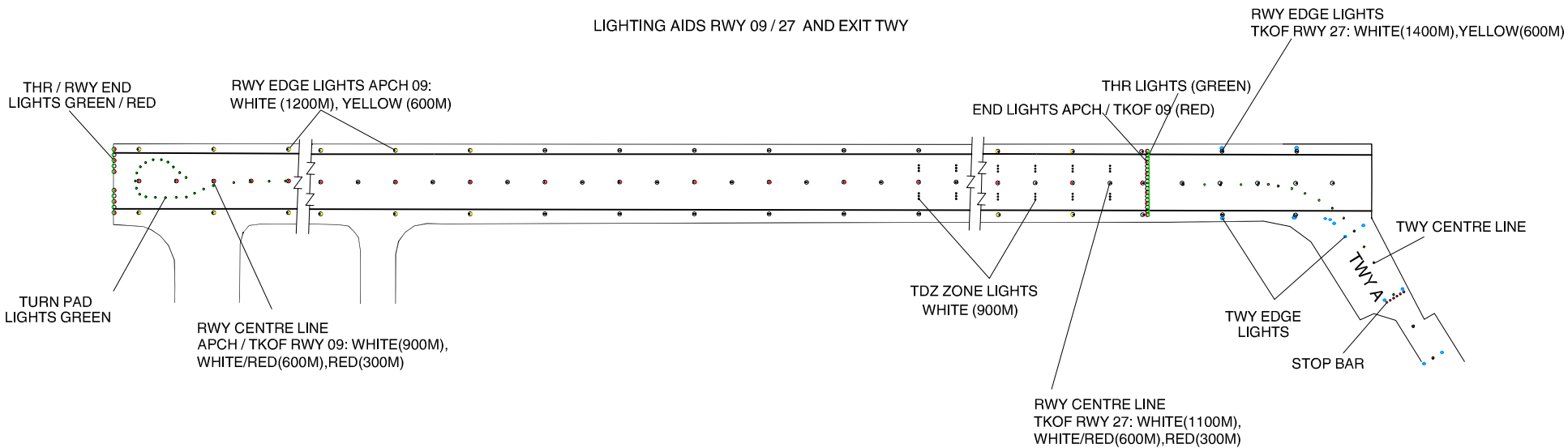
AIP/AC AIP AMDT 07/19



MARKING AIDS RWY 09 / 27 AND EXIT TWY



LIGHTING AIDS RWY 09 / 27 AND EXIT TWY



LEGEND	
AERODROME REFERENCE POINT	⊕
TAXI HOLDING POSITION	⋮
BUILDING	■

Changes: TWR Freq/Ch.