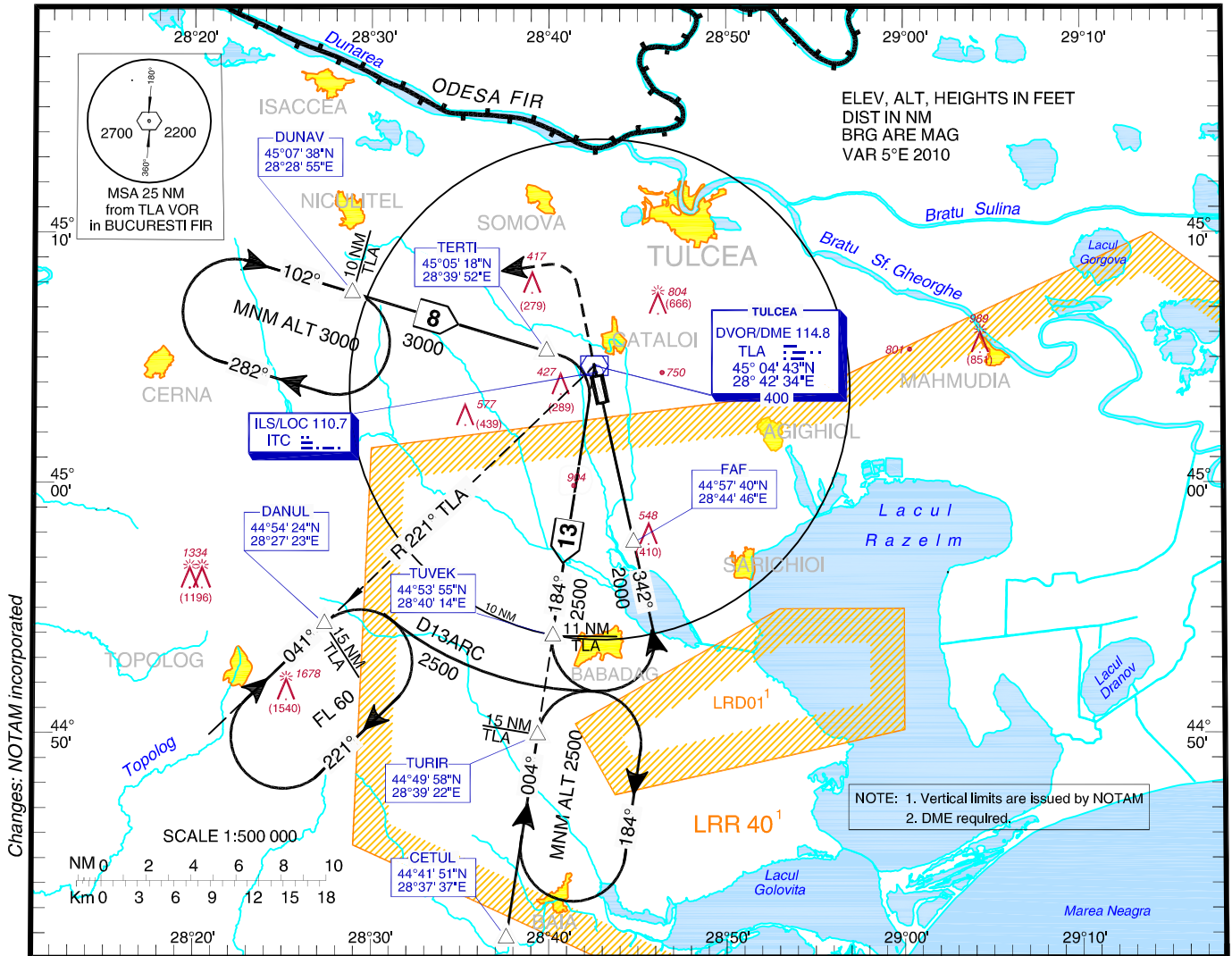


**INSTRUMENT APPROACH
CHART - ICAO**

AERODROME ELEV. 200 ft
HEIGHTS RELATED TO
THR RWY 34 ELEV **138 ft**

TULCEA TOWER 119.755
TULCEA TWR ALTN 120.300

**VOR
RWY 34**

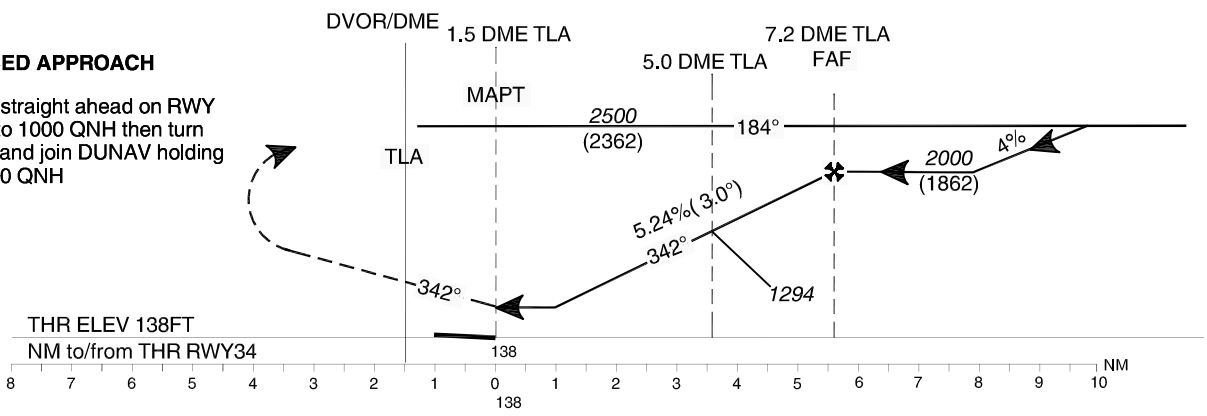


Changes: NOTAM incorporated

Transition Altitude
3000

MISSED APPROACH

Climb straight ahead on RWY track to 1000 QNH then turn LEFT and join DUNAV holding at 3000 QNH



THR ELEV 138FT
NM to/from THR RWY34

| | | | | |
|----------------------|------|------|---|---|
| OCA | A | B | C | D |
| Straight-in Approach | 510 | | | |
| Circling | 1200 | 1300 | | |

| | | | | | | | |
|-------------------|--------|------|------|------|------|------|------|
| | kts | 70 | 90 | 100 | 120 | 140 | 160 |
| FAF - MAPT 5.7 NM | min:s | 4:53 | 3:48 | 3:25 | 2:51 | 2:27 | 2:08 |
| Rate of descent | ft/min | 372 | 478 | 531 | 637 | 743 | 849 |

| | | | | | | |
|-------------|----|-----|-----|------|------|------|
| Dist to TLA | NM | 3 | 4 | 5 | 6 | 7 |
| Altitudes | ft | 657 | 975 | 1294 | 1612 | 1930 |

For data tabulation see verso.

**TULCEA / DELTA DUNĂRII (LRCT)
VOR RWY 34**

AERONAUTICAL DATA TABULATION

| VOR Approach to RWY34 from TURIR, DANUL, DUNAV | |
|---|------------------------------|
| Fix/Point | Coordinates |
| TLA DVOR/DME | 45°04'43.3"N 028°42'34.2"E |
| TURIR – BRG003.63° / 14.93NM TLA | 44°49'58.2"N 028°39'22.3"E |
| DANUL – BRG221.23° / 14.93NM TLA | 44°54'24.1"N 028°27'22.6"E |
| DUNAV – BRG101.55° / 10.10NM TLA | 45°07'37.8"N 028°28'55.2"E |
| TERTI – BRG101.68° / 2.00NM TLA | 45°05'18.0"N 028°39'52.1"E |
| TUVEK – BRG183.66° / 10.93NM TLA | 44°53'55.4"N 028°40'13.5"E |
| FAF – BRG342.44° / 7.22NM TLA | 44°57'40.1"N 028°44'46.1"E |
| D 5.0 TLA (Stepdown) | 44°59'50.4"N 028°44'05.6"E |
| THR RWY 34 (MAPT) | 45°03'14.92"N 028°43'01.82"E |

Final approach descent angle: 3.00°