

AERODROME ELEV. 348 ft

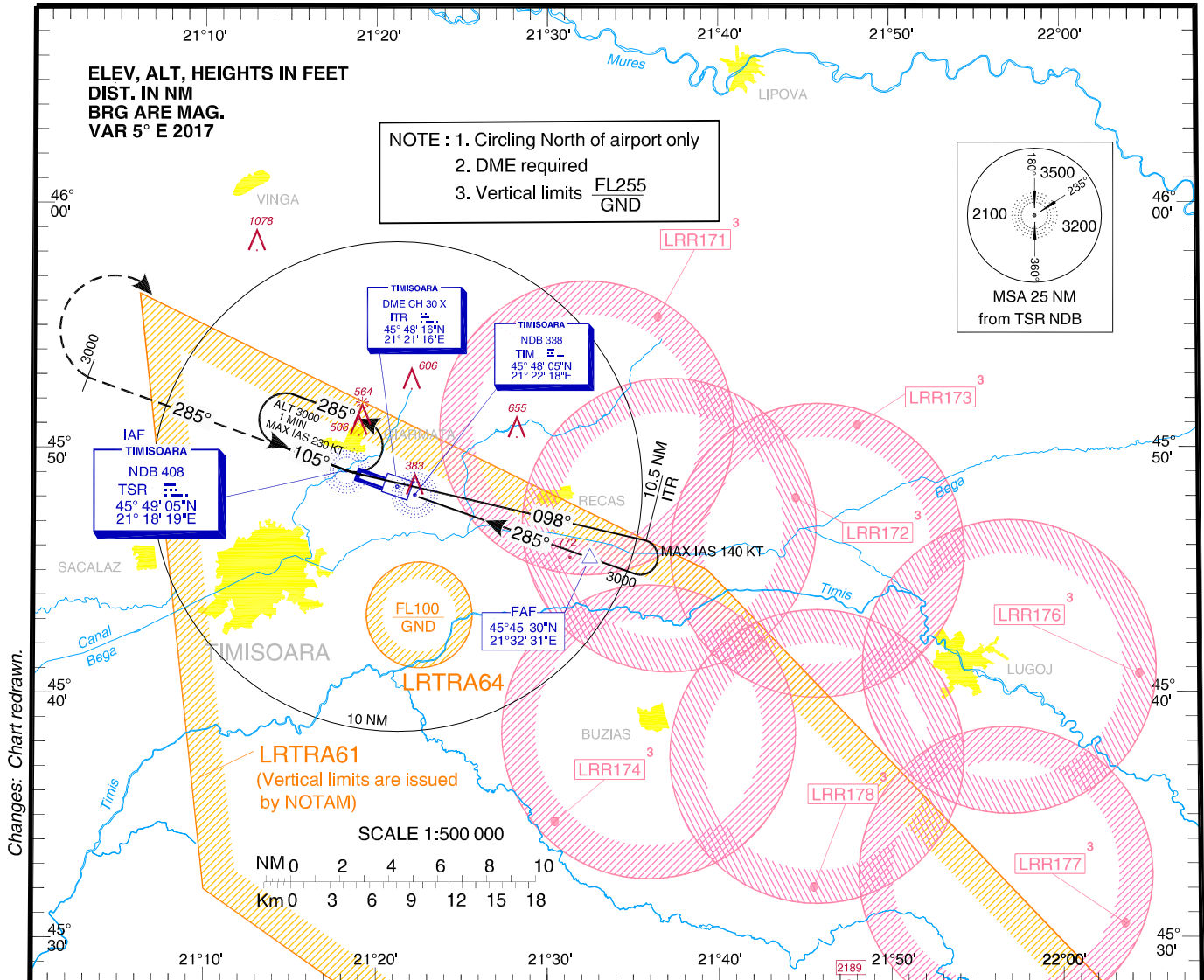
TIMIȘOARA / Traian Vuia (LRTR)

INSTRUMENT APPROACH
CHART - ICAO

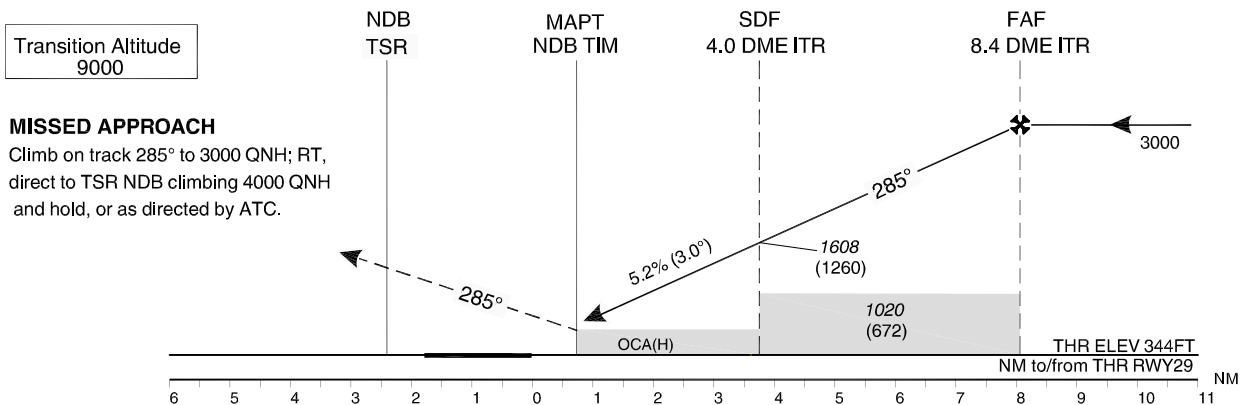
HEIGHTS RELATED TO AD ELEV.

ARAD APPROACH	123.530
ARAD APPROACH ALTN	126.350
TIMIȘOARA TOWER	120.105
TIMIȘOARA TOWER ALTN	129.450
TIMIȘOARA ATIS	123.125

NDB
RWY 29
CAT A, B



Changes: Chart redrawn.



OCA(H)	A	B
Straight-in Approach	630 (282)	
Circling	810	860

GS	kts	70	90	100	120
FAF - MAPT 7.6 NM	min:s	6:30	5:04	4:33	3:48
Rate of descent (5.2%)	ft/min	372	478	531	637

Dist to ITR DME	NM	1.0	2.0	3.0	4.0	5.0	6.0	7.0	8.0
Dist to THR 29	NM	0.8	1.8	2.8	3.8	4.8	5.8	6.8	7.8
Altitude (Height)	FT	653 (305)	971 (623)	1290 (942)	1608 (1260)	1927 (1579)	2245 (1897)	2564 (2216)	2882 (2534)

Timing not authorised for defining MAPT.

For data tabulation see verso



TIMISOARA / Traian Vuia (LRTR)
NDB RWY 29, CAT A, B

AERONAUTICAL DATA TABULATION

NDB Approach to RWY 29, CAT A, B	
Fix/Point	Coordinates
TSR NDB	45°49'04.7"N 021°18'19.5"E
TIM NDB (MAPt)	45°48'04.7"N 021°22'18.4"E
ITR DME	45°48'16.2"N 021°21'15.7"E
10.5 D ITR – BRG 097.57° TSR NDB	45°46'17.9"N 021°35'48.8"E
FAF – BRG 284.54° TSR NDB / D 8.35 ITR	45°45'30.3"N 021°32'30.8"E
SDF - BRG 284.56° TSR NDB / D 4.00 ITR	45°46'58.7"N 021°26'40.4"E
THR RWY 29	45°48'16.24"N 021°21'32.61"E

Final approach descent angle: 3.00°