

AERODROME CHART - ICAO

45° 48' 35" N
021° 20' 16" E
ELEV 348FT

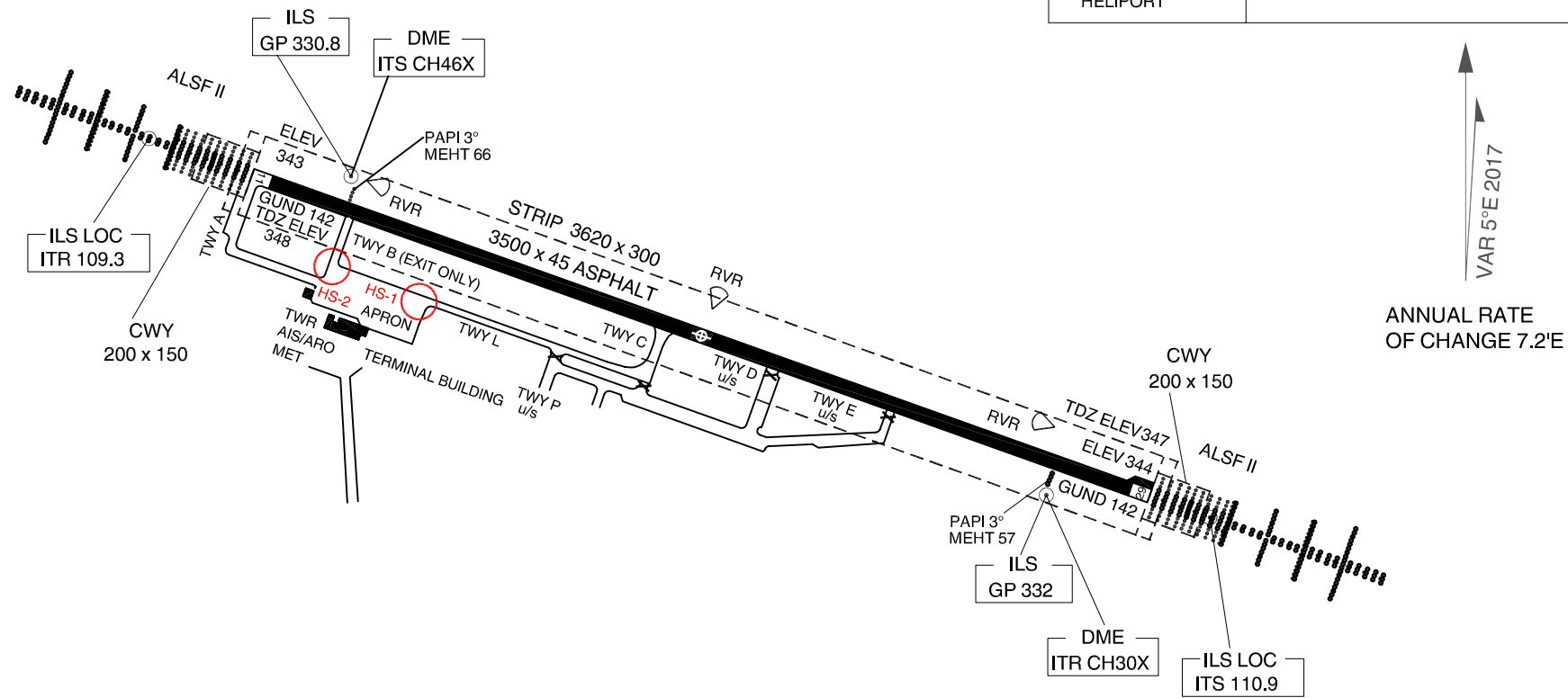
TIMIȘOARA TOWER 120.105
TIMISOARA TOWER ALTN 129.450
TIMISOARA GROUND 121.600

TIMIȘOARA /
Traian Vuia (LRT)

Changes: TWR FREQ, VAR, THR RWY 29, CWY, GUND

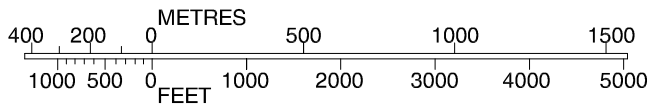
RWY	DIRECTION	THR	BEARING STRENGTH
11	105°	45°48'55"N 021°19'00"E	PCN 42/R/B/W/T Asphalt
29	285°	45°48'16"N 021°21'33"E	
HELIPORT			

ELEVATIONS IN FEET
DIMENSIONS IN METRES
BEARINGS ARE MAGNETIC



↑
VAR 5°E 2017
ANNUAL RATE
OF CHANGE 7.2"E

LEGEND	
RUNWAY VISUAL RANGE (RVR) OBSERVATION SITE	▷
AERODROME REFERENCE POINT	⊕
BUILDING	▬
HOT SPOT WITH IDENT	○ HS-1



HOT SPOTS
HS-1 ACFT exiting TWY L and entering APRON must turn LEFT
HS-2 TWY B closed, do not use as standard taxi departure route

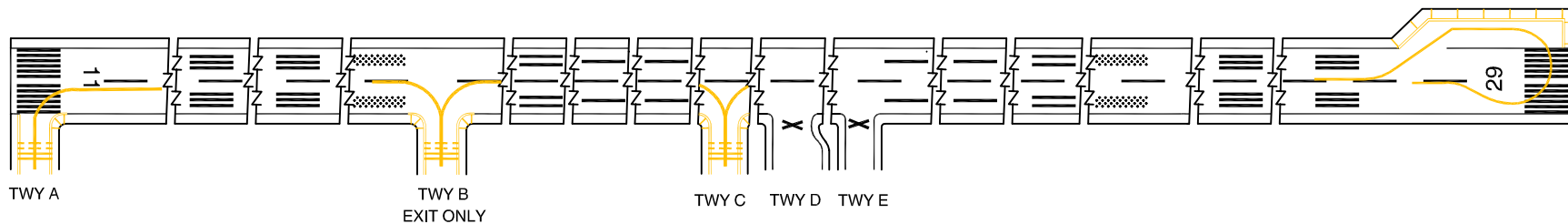
AERODROME CHART - ICAO

45° 48' 35" N
021° 20' 16" E
ELEV 348FT

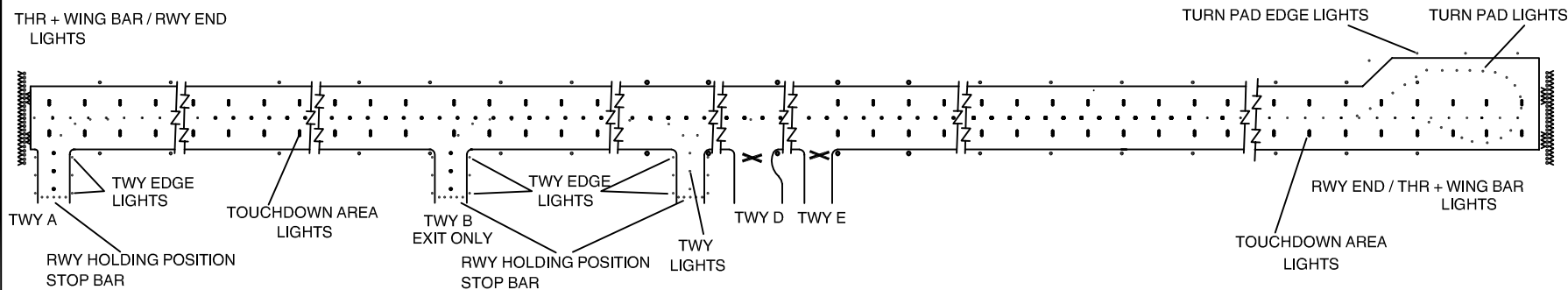
TIMIȘOARA TOWER 120.105
TIMIȘOARA TOWER ALTN 129.450
TIMIȘOARA GROUND 121.600

TIMIȘOARA /
Traian Vuia (LRTT)

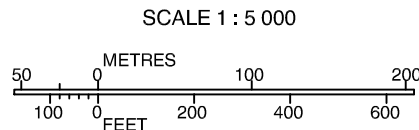
MARKING AIDS RWY 11 / 29 AND EXIT TWY



LIGHTING AIDS RWY 11 / 29 AND EXIT TWY



LEGEND	
AIMING POINT	
RUNWAY-HOLDING POSITION	



Changes: TWR FREQ.