

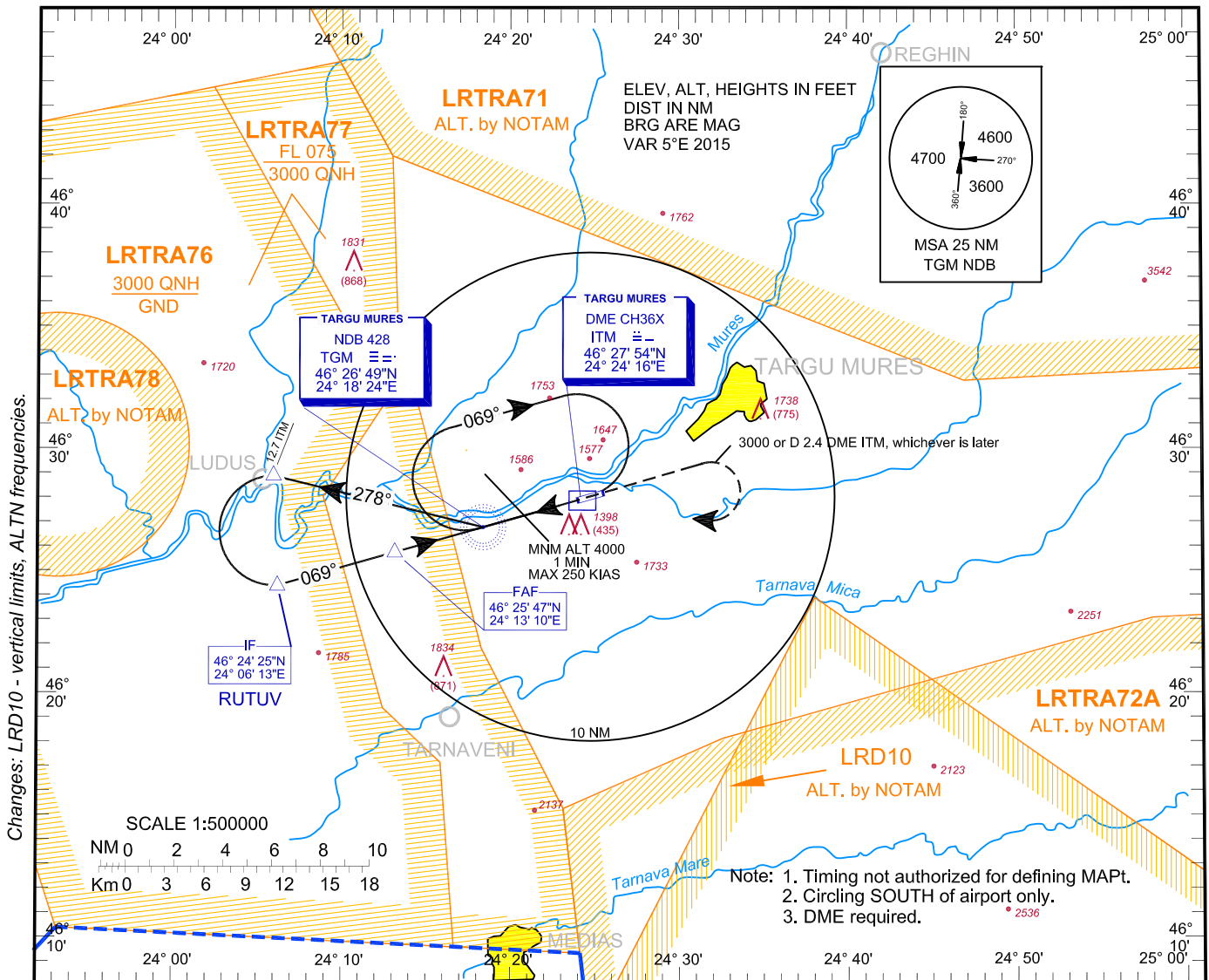
**INSTRUMENT
APPROACH
CHART - ICAO**

AERODROME
ELEV. 963 ft
HEIGHTS RELATED
TO AD ELEV

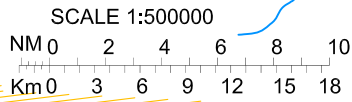
NAPOC APPROACH	126.430
NAPOC APPROACH ALTN	127.275
NAPOC NORTH APPROACH	126.430
NAPOC NORTH APPROACH ALTN	127.275
NAPOC SOUTH APPROACH	119.680
NAPOC SOUTH APPROACH ALTN	127.275

TARGU MURES TOWER	119.180
TARGU MURES TOWER ALTN	120.325
TARGU MURES ATIS	125.950

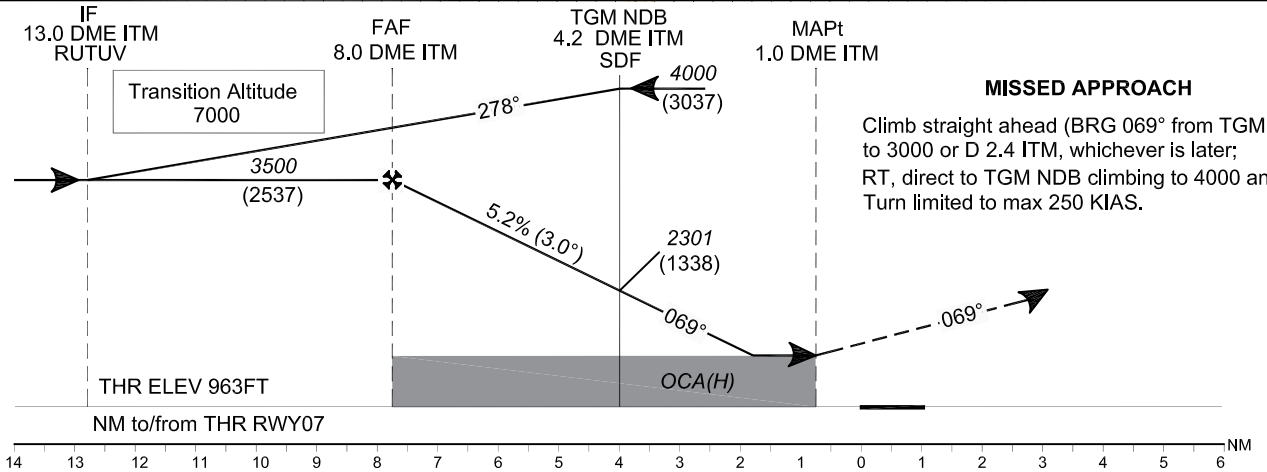
**TÂRGU MUREȘ/
Transilvania-
Târgu Mureș (LRTM)
NDB RWY 07 CAT C / D**



Changes: LRD10 - vertical limits, ALTN frequencies.



- Note: 1. Timing not authorized for defining MAPt.
2. Circling SOUTH of airport.
3. DME required.



MISSED APPROACH

Climb straight ahead (BRG 069° from TGM NDB) to 3000 or D 2.4 ITM, whichever is later; RT, direct to TGM NDB climbing to 4000 and hold. Turn limited to max 250 KIAS.

OCA/H	C	D
Straight-in approach	1720 (757)	
Circling	2200	2300

GS	kts	100	120	140	160
FAF-MAPT 7.0 NM	min:s	4:11	3:29	2:59	2:37
Rate of descent	ft/min	531	637	743	849

Dist to DME ITM	NM	7	6	5	4.2 TGM	4	3	2
Dist to THR 07	NM	6.8	5.8	4.8	4.0	3.8	2.8	1.8
Altitude (Height)	ft	3190 (2227)	2871 (1908)	2553 (1590)	2301 (1338)	2234 (1271)	1916 (953)	1597 (634)

For data tabulation see verso.

**TÂRGU MUREŞ / TRANSILVANIA - TÂRGU MUREŞ (LRTM)
NDB CAT C, D RWY 07**

AERONAUTICAL DATA TABULATION

NDB Approach CAT C, D to RWY 07	
Fix/Point	Coordinates
TGM NDB (IAF, SDF)	46°26'48.9"N 024°18'23.7"E
12.7 D ITM – BRG 278.49° TGM outbound	46°28'53.9"N 024°05'57.7"E
RUTUV / 13.0 D ITM (IF) - BRG 068.78° TGM	46°24'24.7"N 024°06'13.1"E
8.0 D ITM (FAF) – BRG 068.89° TGM	46°25'47.2"N 024°13'09.9"E
1.0 D ITM (MAPT)	46°27'41.6"N 024°22'51.5"E
THR RWY 07	46°27'55.01"N 024°24'00.25"E

Final approach descent angle: 3.00°