

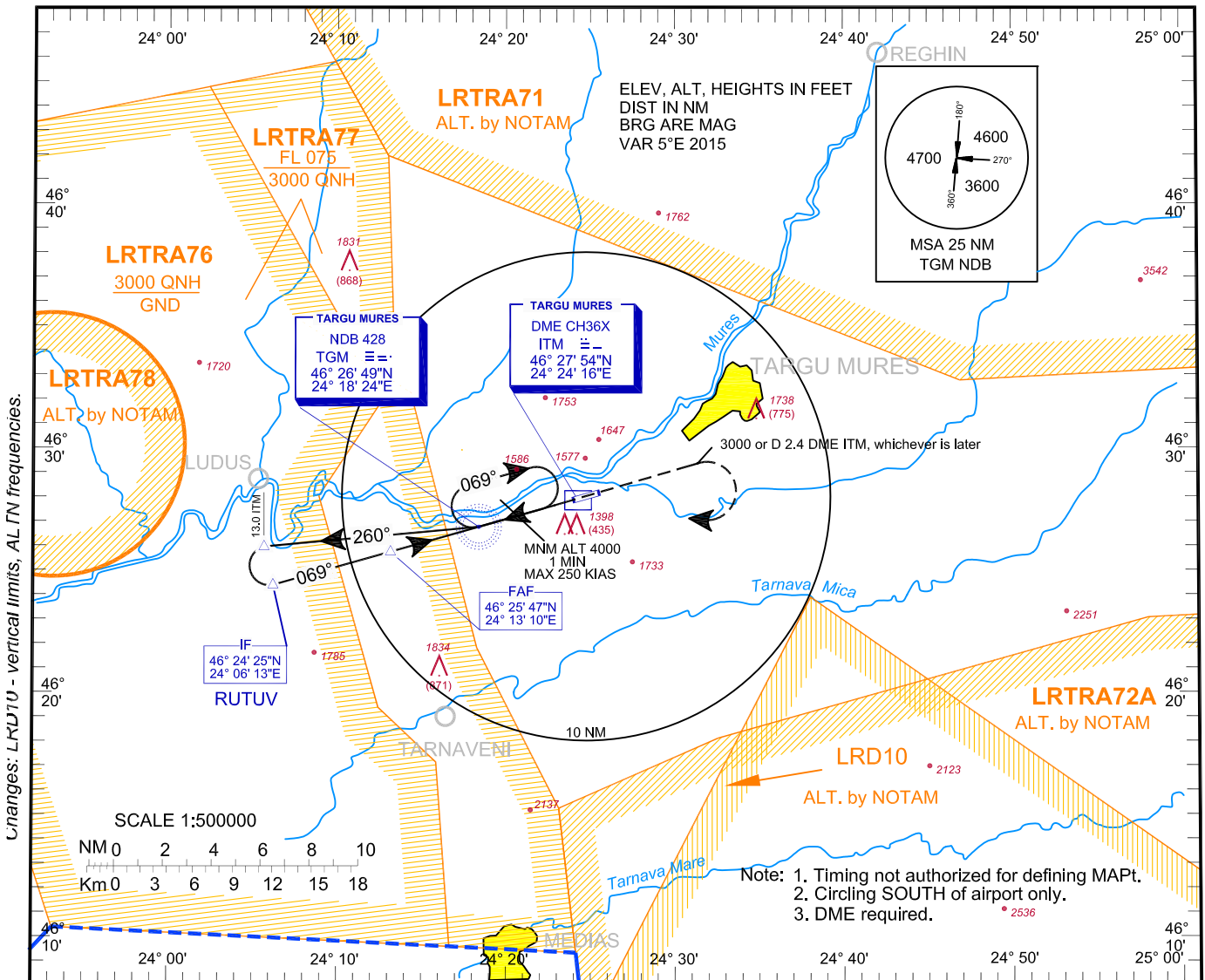
**INSTRUMENT  
APPROACH  
CHART - ICAO**

**AERODROME**  
**ELEV. 963 ft**  
HEIGHTS RELATED  
TO AD ELEV

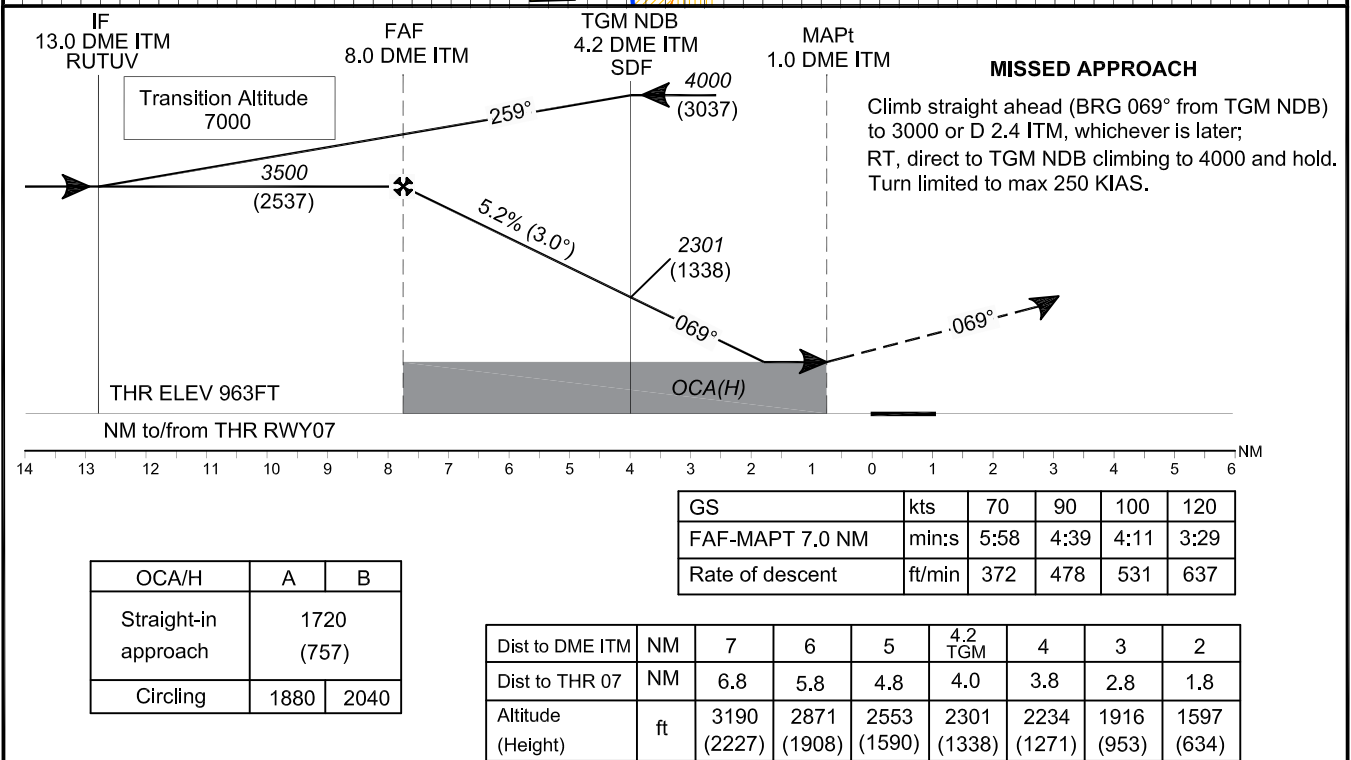
NAPOC APPROACH	126.430
NAPOC APPROACH ALTN	127.275
NAPOC NORTH APPROACH	126.430
NAPOC NORTH APPROACH ALTN	127.275
NAPOC SOUTH APPROACH	119.680
NAPOC SOUTH APPROACH ALTN	127.275

TARGU MURES TOWER	119.180
TARGU MURES TOWER ALTN	120.325
TARGU MURES ATIS	125.950

**TÂRGU MUREȘ/  
Transilvania-  
Târgu Mureș (LRTM)  
NDB RWY 07 CAT A / B**



Changes: LRTM - vertical limits, ALTN frequencies.



For data tabulation see verso.

**TÂRGU MUREŞ / TRANSILVANIA - TÂRGU MUREŞ (LRTM)  
NDB CAT A, B RWY 07**

**AERONAUTICAL DATA TABULATION**

<b>NDB Approach CAT A, B to RWY 07</b>	
<b>Fix/Point</b>	<b>Coordinates</b>
<b>TGM NDB (IAF, SDF)</b>	46°26'48.9"N 024°18'23.7"E
<b>13.0 D ITM – BRG 259.47° TGM outbound</b>	46°25'59.1"N 024°05'41.1"E
<b>RUTUV / 13.0 D ITM (IF) – BRG 068.78°TGM</b>	46°24'24.7"N 024°06'13.1"E
<b>8.0 D ITM (FAF) – BRG 68.89° TGM</b>	46°25'47.2"N 024°13'09.9"E
<b>1.0 D ITM (MAPT)</b>	46°27'41.6"N 024°22'51.5"E
<b>THR RWY 07</b>	46°27'55.01"N 024°24'00.25"E

Final approach descent angle: 3.00°